



Maintenance Guide

LG styler | Steam Clothing Care

LG Styler Applications



HOTEL

Hotel guests can pack fewer clothes and travel light. The LG Styler makes it possible to refresh clothing and wear it more than once.



OFFICE

Meetings go better when people look and feel their best. The LG Styler reduces wrinkles and odors and refreshes clothing so everyone stays sharp.



RESORT

Resort guests can gently dry beachwear and some swimwear and be ready for the next day's adventure.



RESTAURANT

Guests can remove odors from food or cigarettes from their suits or outerwear while dining.



HOME CLOSET

The LG Styler makes a smart addition to any new home or home remodeling plans.



AIRPORT LOUNGE

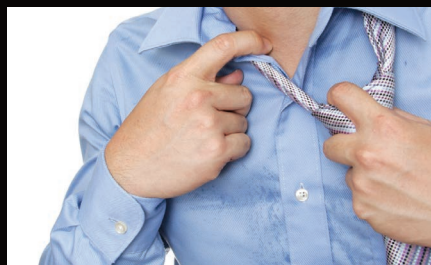
Visitors to the airport VIP lounge can refresh clothing while they wait to board or after deplaning. They will arrive at their destination with refreshed clothing.

When to Use the LG Styler

After traveling.
When packed clothes are wrinkled.



After a tough day of meetings or activities.
When clothes need to be refreshed.



After getting caught in the rain or snow.
When damp clothes need to be dried.



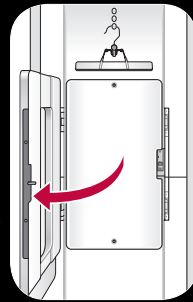
How to Use the LG Styler?

1 Hang Hang clothes on hangers.

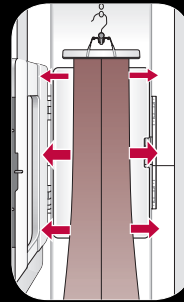


Press Here

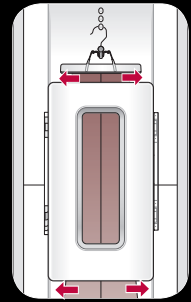
Using the Pants Crease Care



1 Open the door to the Pants Crease Care by pressing the icon on the front.

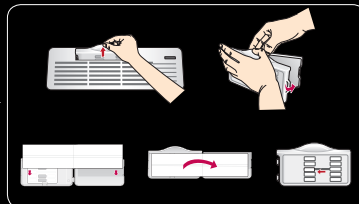
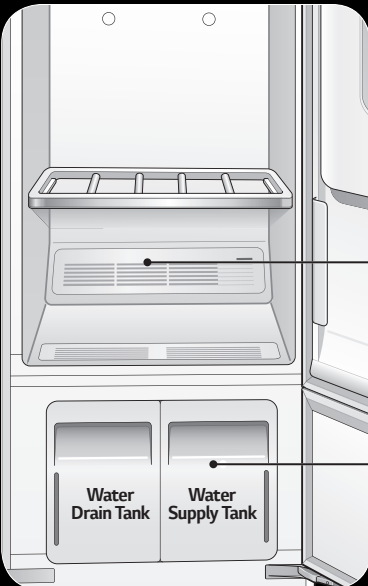


2 Make sure the pants are hanging straight.

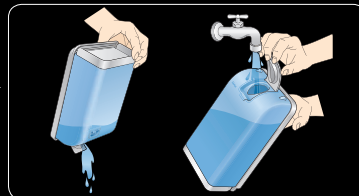


3 Close the Pants Crease Care, then straighten the pants once more.

2 Fill



Open the aroma filter and insert a dryer fabric softener sheet into it.



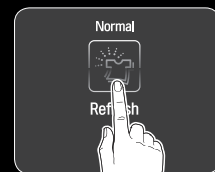
Empty the drain tank, and make sure the water supply tank is filled with water.

* The Fill Water indicator lights when the supply tank is missing or empty.

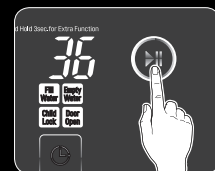
3 Push



Push Power Button



Select Cycle



Push Start Button

Checkpoints Before Use

- Before using, remove all empty hangers in the Styler.
- Make sure that the water supply tank is filled with water. Without water, the product does not work.
- Make sure that the water drain tank is empty. The product does not work if the tank is filled with water. If the water drain tank is full, empty it.
- For best performance and to avoid damage to clothing, make sure to choose a cycle that is appropriate for the clothing placed in the Styler.
- Fasten the buttons and zippers on all garments and hang them on hangers.

Choosing Items for the Styler

Recommended Clothes	Do Not Use With
Suits, Dress shirts, Raincoats, Swimsuits, Sportswear	Vinyl, Starched Clothes, Heavy Blankets, Shoes, Fur, Leather, Silk

Tip for Using

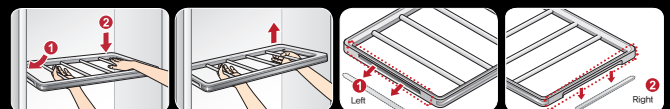
1 Storing the Shelf

When styling long clothes such as coats or dresses, hang the shelf on the shelf holder.



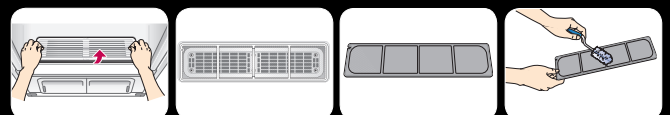
2 Shelf Assembly

Insert the left shelf groove into the left shelf support, then lower the right shelf groove onto the right shelf support.



3 Lint Filter

Always make sure the lint filter is clean before starting a new load; a clogged lint filter will increase drying times.



4 Please refer to the owner's manual for more details.