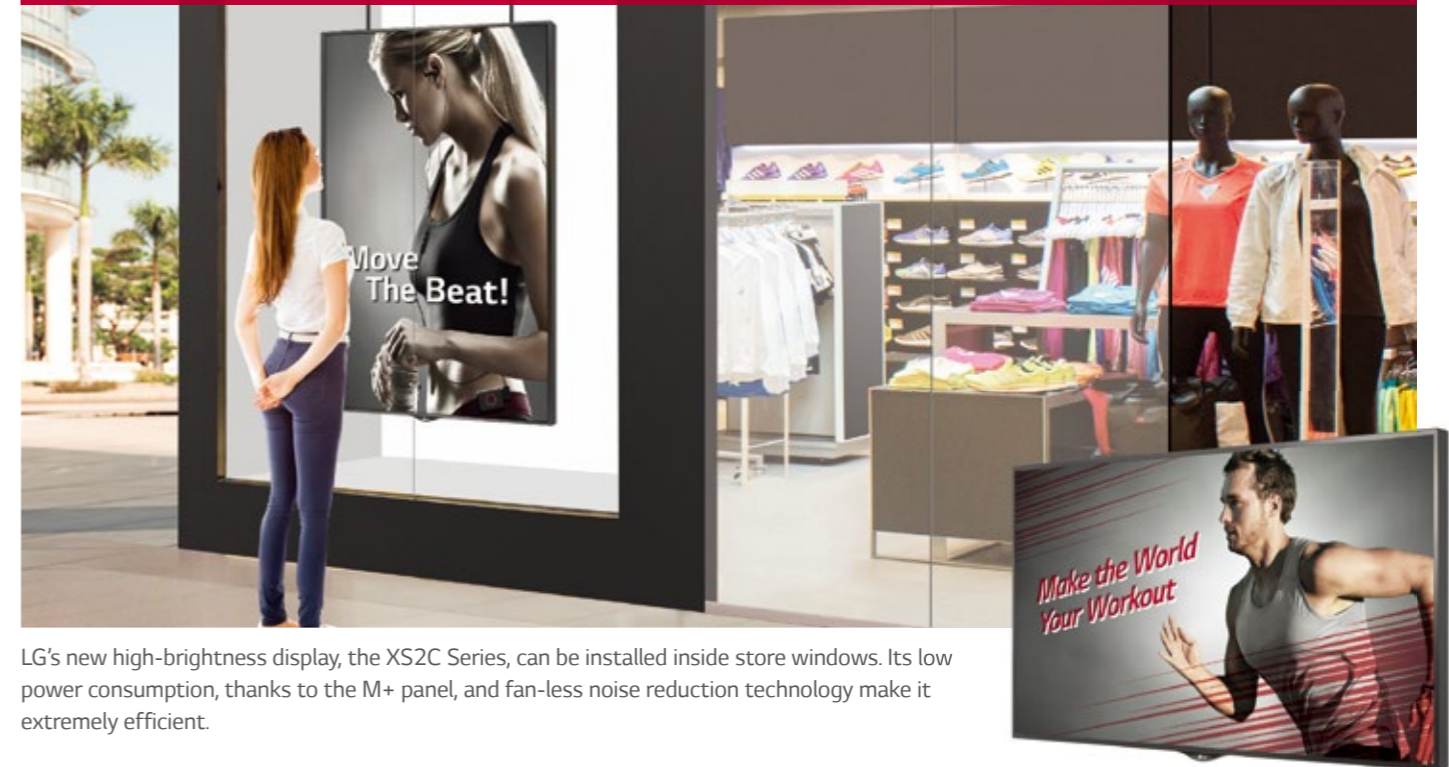


Outstanding Visibility with Quiet Operation

Window-Facing Display XS2C Series



LG's new high-brightness display, the XS2C Series, can be installed inside store windows. Its low power consumption, thanks to the M+ panel, and fan-less noise reduction technology make it extremely efficient.



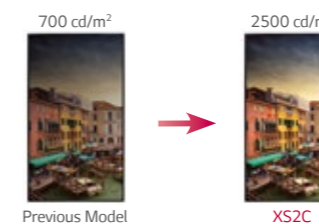
Key Features

Outstanding Visibility



Increased Brightness

The brightness has been increased to 2,500 cd/m² compared to the previous WX30 model, making the XS2C the ultimate screen for outdoor visibility.



Advanced Local Dimming

The backlighting in specific areas of the screen can be controlled to increase contrast and provide a clearer image.



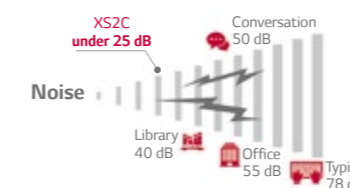
* Exclusive on 55"

Quiet Operation



Fan-Less Noise Reduction

The XS2C is the perfect choice for an in-window environment due to the removal of the cooling fan. Its operating noise level is under 25 dB, which is quieter than a recording studio (30 dB).

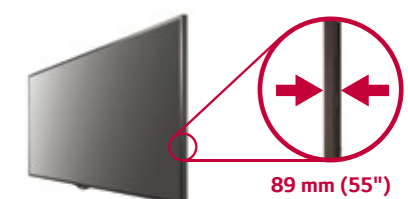


Enhanced Design Configuration



Slimmer Depth

The slimmer depth saves space for installation and makes the enclosure design slimmer.



Download LG Commercial Display Mobile App



Learn more www.lg.com/b2b or www.lgcommercial.com

YouTube [youtube.com/c/LGCommercialDisplay](https://www.youtube.com/c/LGCommercialDisplay)

LG may make changes to specifications and product descriptions without notice. Copyright © 2016 LG Electronics Inc. All rights reserved. "LG Life's Good" is a registered trademark of LG Corp. The names of products and brands mentioned here may be the trademarks of their respective owners.



Outstanding Visibility with Quiet Operation

Window-Facing Display XS2C Series



Screen Size
75", 55"



XS2C Series

- Brightness : 2,500 cd/m² (Typ.)
- Life Time : 50,000 hours
- Bezel : 75" (11.8 mm), 55" (11.4 mm (L/R), 13.5 mm (T/B))
- Depth : 116 mm (75"), 89 mm (55")
- Interface : HDMI (2) / DP / DVI / RJ45 / IR / RS232C / IR / USB / SD Card / External speaker out (L/R)

Other Features

Cost Effective



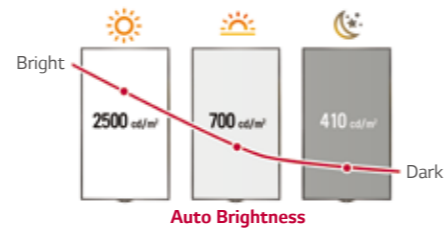
Low Power Consumption Using The M+ Panel

The M+ panel offers excellent energy efficiency and cost savings and decreases power consumption by 30% compared to conventional RGB panels.



Smart Brightness Control

The auto-brightness sensor and preset time scheduler save power whenever possible.



Product Reliability



Dust & Humidity Protection

The conformal coating enhances circuit board reliability by protecting it from dust, iron shavings, humidity and other harsh conditions.



High Operating Temperature

The panel offers superb reliability under high operating temperatures and reduces cooling fan usage.



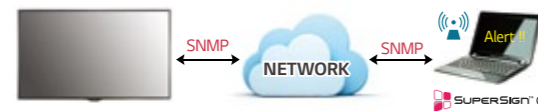
* Exclusive on 55"

Easy Maintenance



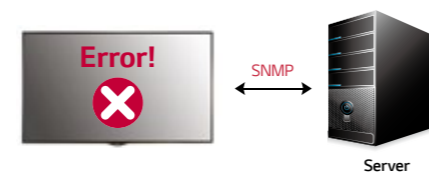
Real-Time Remote Monitoring

When an alarm occurs, an email notification is sent through the SNMP using the SuperSign C or SI software. In case a malfunction or error occurs, real-time remote care is available.



Saving System Log Files

The XS2C supports log file back-up for fault clarification when the display fails. This allows you to conveniently check when an error has occurred.



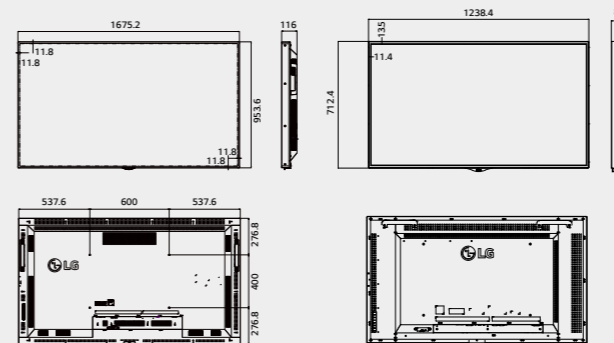
Specifications

XS2C Series	75XS2C	55XS2C
PANEL		
Screen Size	75"	55"
Panel Technology	IPS M+ (WRGB)	IPS M+ (WRGB)
Aspect Ratio	16 : 9	16 : 9
Native Resolution	3,840 x 2,160 (UHD)	1,920 x 1,080 (FHD)
Brightness	2,000 cd/m ² (Min.), 2,500 cd/m ² (Typ.)	2,750 cd/m ² (Max), 2,250 cd/m ² (Min), 2,500 cd/m ² (Typ.)
Contrast Ratio	1200 :1 (TBD)	1,000 :1
Dynamic CR	500,000 :1	500,000 :1
Viewing Angle (H x V)	178 x 178	178 x 178
Surface Treatment	3D AGLR (Haze 3%)	Hard Coating (2H), Anti-Reflection Treatment of the Front Polarizer (Reflectance 1.5%)
Life time	50,000 hours	50,000 hours
Orientation	Portrait & Landscape	Portrait & Landscape
CONNECTIVITY	HDMI(2), DP, DVI-D, Audio, USB, IR Receiver, Pixel Sensor	
Input	DP, External Speaker Out (L/R)	
Output	RS232C (In/Out), RJ45	
External Control		
Bezel Color	Black	Black
Bezel Width	On bezel 12.8 mm / Off bezel 11.8 mm	11.4 mm (L/R), 13.5 mm (T/B)
Monitor Dimension (W x H x D)	1,675.2 x 953.6 x 116 mm	1,238.4 x 712.4 x 89 mm
PHYSICAL SPECIFICATION		
Weight (Head)	43 kg	25.6 kg
Carton Dimensions (W x H x D)	1,675.2 x 116 x 953.6 mm	1,366 x 228 x 800 mm
Packed Weight	52.2 kg	30.7 kg
VESA™ Standard Mount Interface	600 x 400 mm	600 x 400 mm
SPECIAL FEATURES	Temperature Sensor, Auto Brightness sensor, Tile Mode, Natural Mode @Tile Mode, Source Selection, Brightness/Contrast/Backlight	
ENVIRONMENT CONDITIONS		
Operation Temperature Range	0°C to 40°C (w/o Direct Sunlight) 0°C to 30°C (Direct Sunlight)	0°C to 45°C (w/o Direct Sunlight) 0°C to 35°C (Direct Sunlight)
Operation Humidity Range	10% to 80%	10% to 80%
POWER		
Power Supply	100-240 V~, 50/60 Hz	100-240 V~, 50/60 Hz
Power Type	Built-In Power	Built-In Power
Power Consumption	Typ./Max 650 W / 650 W	220 W / 260 W
Smart Energy Saving	TBD	100 W
STANDARD (CERTIFICATION)		
Safety	RU / CB scheme	RU / CB scheme
EMC	FCC Class "A" / CE / KCC	FCC Class "A" / CE / KC
SOFTWARE COMPATIBILITY		
SuperSign W/Lite	Yes	Yes
SuperSign C	Yes	Yes
ACCESSORIES		
Accessories	Remote Controller (2 batteries included), Power Cord, HDMI Cable, Manual (ES&EIG)	
Optional Accessories	LSW630 (Wall Mount), KT-SP0, AN-WF500 ** Stand is not available	LSW630 (Wall Mount), KT-SP0, AN-WF500 ** Stand is not available

Dimensions (unit : mm)

75"
1,675.2 x 953.6 x 116 / 43 kg

55"
1,238.4 x 712.4 x 89 / 25.6 kg



Connectivity

- 1 USB IN
- 2 DP IN
- 3 DP OUT
- 4 HDMI IN
- 5 DVI-D IN
- 6 AUDIO IN (PC)
- 7 LAN
- 8 PIXEL SENSOR
- 9 RS-232C IN
- 10 RS-232C OUT
- 11 EXT IR IN
- 12 SPEAKER OUT (8 Ω) R/L
- 13 AC IN

