

Specifications

UH5C Series		86UH5C	75UH5C
PANEL	Screen Size	86"	75"
	Panel Technology	IPS	IPS
	Aspect Ratio	16 : 9	16 : 9
	Native Resolution	3,840 x 2,160 (UHD)	3,840 x 2,160 (UHD)
	Brightness	500cd/m²	500cd/m²
	Contrast Ratio	4,000,000:1	4,000,000:1
	Viewing Angle (H x V)	178 x 178	178 x 178
	Response Time	8ms(G to G)	6ms (G to G)
	Surface Treatment	Low Haze 3%	Low Haze 3%
	Operation Hours	24/7	24/7
CONNECTIVITY	Orientation	Portrait & Landscape	Portrait & Landscape
	Input	HDMI, DP, DVI-D, Audio, USB 3.0, SD Card	HDMI, DP, DVI-D, Audio, USB 3.0, SD Card
	Output	DP, Audio	DP, Audio
	External Control	RS232C, RJ45, IR Receiver, Pixel Sensor	RS232C, RJ45, IR Receiver, Pixel Sensor
PHYSICAL SPECIFICATION	Bezel Color	Black	Black
	Bezel Width	14.7mm	14.9mm
	Monitor Dimension (W x H x D)	1,926.2 x 1,097.2 x 60.6mm (without logo / handle)	1,682.4 x 960.3 x 39.7mm (without logo / handle)
	Weight (Head)	49kg	41.5kg
	Carton Dimensions (W x H x D)	2,073 x 1,260 x 292mm	1,816 x 1,123 x 228mm
	Packed Weight	61.1kg	49.5kg
	VESA™ Standard Mount Interface	600 x 400mm	600 x 400mm
SPECIAL FEATURES		Temperature Sensor, Auto Brightness Sensor, Tile Mode (up to 15x15), Natural Mode@Tile Mode, ISM Method, Internal Memory (8GB, System 4GB), Wi-Fi built-in (802.11n), USB Cloning, Content Scheduling, Sync mode, PM mode, Fail Over, Wake on LAN, BEACON (On/Off), Embedded Template, PIP/PBP (2/3/4)	
ENVIRONMENT CONDITIONS	Operation Temperature Range	0 °C to 40 °C	0 °C to 40 °C
	Operation Humidity Range	10 % to 80 %	10 % to 80 %
POWER	Power Supply	100-240V~, 50/60Hz	100-240V~, 50/60Hz
	Power Type	Built-In Power	Built-In Power
	Power Typ.	275W	240W
	Power Consumption Smart Energy Saving	193W	170W
STANDARD (CERTIFICATION)	Safety	UL / cUL / CB / TUV / KC	UL / cUL / CB / TUV / KC
	EMC	FCC Class "A" / CE / KCC	FCC Class "A" / CE / KCC
	ErP / Energy Star	No / No	No / No
MEDIA PLAYER COMPATIBILITY	OPS Type Compatible	Yes	Yes
	External Media Player Attachable	Yes (MP500 / MP700)	Yes (MP500 / MP700)
SOFTWARE COMPATIBILITY	SuperSign W/Lite	Yes	Yes
	SuperSign C	Yes	Yes
ACCESSORY	Basic	Remote Controller (include battery 2ea), Power Cord, QSG, DP cable (2.6M), Regulation Book, Phone to RS232C Gender, Memory Cover	Remote Controller (include 2ea batteries), Power Cord, QSG, DP 1.8M, Regulation Book, Phone to RS232C Gender, Memory Cover
	Optional	Pixel Sensor (KT-SP0), Media Player, OPS Kit (KT-OPSA), HDBaseT (EB-B100)	Pixel Sensor (KT-SP0), Media Player, OPS Kit (KT-OPSA), HDBaseT (EB-B100)

Connectivity

- 1 LAN

2 AUDIO IN

3 AUDIO OUT

4 DP OUT

5 DVI-D IN

6 PIXEL SENSOR

7 IR & LIGHT SENSOR

8 DP IN
- 9 HDMI IN 3

10 HDMI IN 2

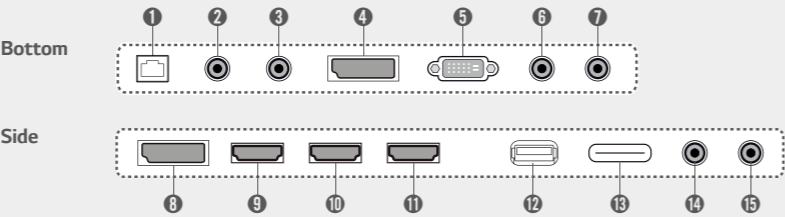
11 HDMI IN 1

12 USB 3.0 IN

13 SD CARD

14 RS-232C IN

15 RS-232C OUT



Muliple Screen Split Ultra HD Signage
Ultra HD UH5C Series



The new Ultra HD large display, UH5C Series supports displaying Ultra HD content as well as a divided content layout to show up to 4 split images on one screen. Its benefit enables you to create various formats of content to deliver commercial message effectively. Also, it is enhanced in content management. With LG SuperSign EZ providing basic content templates, you can create and edit content simply and quickly on your mobile device or signage display.

Key Features

Ultra HD



Ultra HD Resolution (3,840x2,160)

Ultra HD Large screen delivers immersive viewing experience by 4 times higher definition picture quality than FHD.



High Efficiency Video Coding

Supports HEVC-based content which has the double data compression ratio than the H.264, so network traffic can be reduced by half.

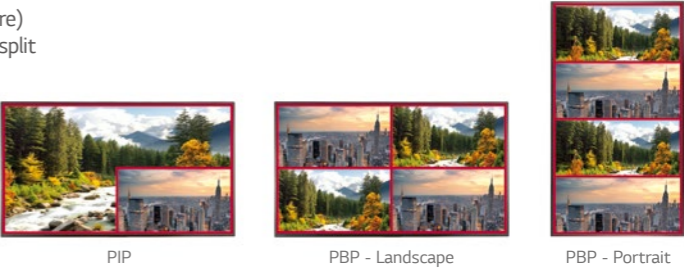


Multiple Screen



Multiple Screen with PBP or PIP

PBP (Picture-By-Picture) and PIP (Picture-In-Picture) feature gives a chance to compose up to 4 divided split screen on landscape or portrait display format.



Muliple Screen Split Ultra HD Signage

Ultra HD UH5C Series



Screen Sizes
86", 75"

UH5C Series

- Brightness : 500cd/m²
- Bezel : 86" (14.7mm Even Bezel)
75" (14.9mm Even Bezel)
- Depth : 86" (60.6mm / without logo, handle)
75" (39.7mm / without logo, handle)
- Interface : DP / HDMI / DVI / RS232C / RJ45 /
Pixel Sensor / SD Card / USB
- SuperSign W/C/N



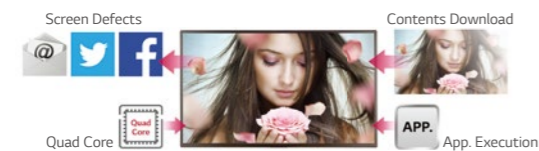
Other Features

Smart Platform



Quad Core SoC*

The High Performance SoC can execute several tasks at the same time and provides smooth content playback.



*SoC : System-on-Chip

webOS 2.0

The webOS 2.0 platform provides powerful and convenient tools to create, including app development materials.

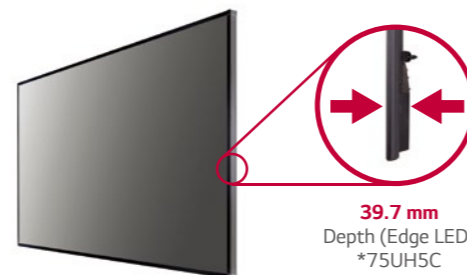


Space Management Efficiency



Slimmer Depth

With its slim depth and built-in speaker, which increases space efficiency, you don't need to install an extra media player. Also, you can move it conveniently with its handle on the back side.

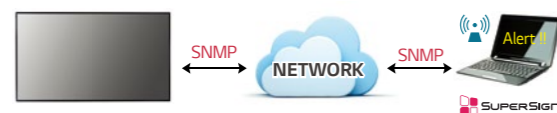


Easy Maintenance



Real-Time Remote Monitoring

When an alarm occurs, an e-mail notification is sent using SuperSign C or SI SW through the SNMP Protocol. In case of malfunctions or errors, real-time remote care is available.



Embedded Template by SuperSign EZ

You can edit content not only on your smart phone but also on your PC very easily and conveniently at any time.



Supportive Convenience

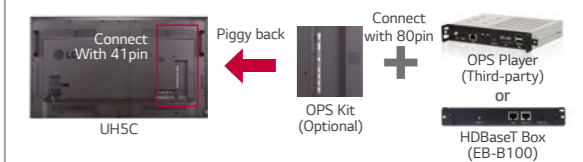
BEACON

With BEACON and Bluetooth Low Energy (BLE) supported by UH5C, retail stores can provide coupons and information in real-time.



OPS* Kit / HDBaseT Box

The UH5C provides an OPS Kit to connect a third-party OPS player or HDBaseT box. Users have the flexibility to choose any media player as long as it complies with the OPS.



*OPS : Open Pluggable Specification

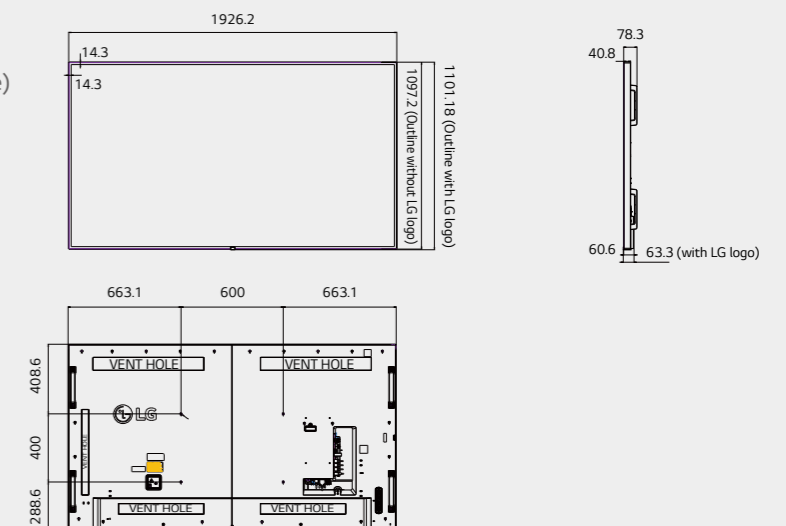
Dimension (unit : mm)

86"

1,926.2 x 1,101.2* x 63.6*mm / 49kg (Without handle)

1,926.2 x 1,101.2* x 78.3*mm (With handle)

*With LG logo



75"

1,682.4 x 963.3* x 57.9* mm / 41.5kg (Without handle)

1,682.4 x 963.3* x 73.9* mm (With handle)

* With LG logo

