

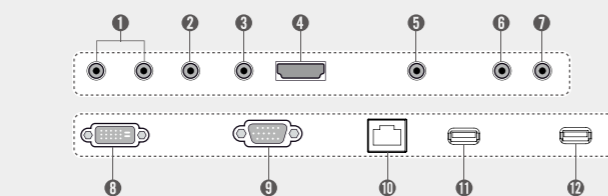
## Specifications

SE3B Series		65	55	49	43	32
PANEL	Screen Size	65	55	49	43	32
	Panel Technology	IPS (PD)				
	Aspect Ratio	16 : 9				
	Native Resolution	1,920 x 1,080 (FHD)				
	Brightness	400cd/m <sup>2</sup>	350cd/m <sup>2</sup>			
	Contrast Ratio	500,000:1				
	Viewing Angle(H x V)	178 x 178				
CONNECTIVITY	Input	HDMI, DVI-D, RGB, Stereo Mini Jack, USB (2)				
	Output	Stereo Mini Jack, External Speaker Out				
	External Control	RS232C (In/Out), RJ45, IR Receiver				
PHYSICAL SPECIFICATION	Bezel Color	Black				
	Bezel Width	11.9mm (T/R/L), 18mm (B)	11.9mm (T/R/L), 18mm (B)	11.9mm (T/R/L), 18mm (B)	11.9mm (T/R/L), 18mm (B)	13mm (T/R/L), 18mm (B)
	Monitor Dimensions (W x H x D)	1,456.9 x 838 x 41.1mm	1,238 x 714.9 x 38.6mm	1,102.2 x 638.5 x 38.6mm	969.6 x 563.9 x 38.6mm	729.4 x 428.9 x 55.5mm
	Weight (Head)	27.7kg	17.3kg	14.1kg	9.8kg	5.2kg
	Weight (Head + Stand)	32.9kg	20.6kg	17.4kg	12.3kg	6kg
	Monitor with Optional Stand & Speaker Dimensions (W x H x D)	1,456.9 x 898.1 x 293.7mm	1,238 x 773.4 x 219.6mm	1,102.2 x 696.8 x 219.6mm	969.6 x 622.2 x 193mm	729.4 x 481 x 154.2mm
	Weight (Head + Stand + Speaker)	33.4kg	21.1kg	17.9kg	12.8kg	6.5kg
	Carton Dimensions (W x H x D)	1,561 x 951 x 170mm	1,330 x 813 x 151mm	1,197 x 760 x 134mm	1,052 x 650 x 123mm	810 x 510 x 132mm
	Packed Weight	33.6kg	21.5kg	17.1kg	12.4kg	6.5kg
	VESA <sup>SM</sup> Standard Mount Interface	300 x 300		200 x 200		
SPECIAL FEATURES	USB Content Scheduling, Conformal Coating, SNMP Support, Wi-Fi Ready (Dongle), Power Management modes (Sustain Aspect Ratio/Stand-by Screen, etc.), No Signal Image setting, Enhanced ISM (Image Sticking Minimization) Mode, Holiday Schedule/Local Time Auto Setting, Fail-over (USB, RGB, DVI, HDMI), Wake on LAN					
ENVIRONMENTAL CONDITIONS	Operating Temperature range	0 °C to 40 °C	0 °C to 40 °C	0 °C to 40 °C	0 °C to 40 °C	0 °C to 40 °C
	Operating Humidity range	10 % to 80 %	10 % to 80 %	10 % to 80 %	10 % to 80 %	10 % to 80 %
POWER	Power Supply	100-240V~, 50/60Hz				
	Power Type	Built-In Power				
POWER CONSUMPTION	Typ.	95W	70W	65W	60W	50W
	Smart Energy Saving	70W	55W	50W	45W	35W
STANDARD (CERTIFICATION)	Safety	UL / cUL / CB / TUV / KC				
	EMC	FCC Class "A" / CE / KCC				
	ErP / Energy Star	Yes / Yes (Energy Star 6.0)				
MEDIA PLAYER COMPATIBILITY	External Media player Attachable	Yes (MP500/MP700)	Yes (MP500/MP700)	Yes (MP500/MP700)	Yes (MP500/MP700)	No
	Software COMPATIBILITY	SuperSign-w lite SuperSign-c				
ACCESSORY	Basic	Remote Controller (2 batteries included), Power Cord, QSG, RGB Cable, Regulation Book, Phone to RS232C Gender				
	Optional	Speaker (SP-5000), Stand (ST-652T).	Speaker (SP-5000), Stand (ST-492T).	Speaker (SP-5000), Stand (ST-492T).	Speaker (SP-5000), Stand (ST-432T).	Speaker (SP-5000), Stand (ST-322T).

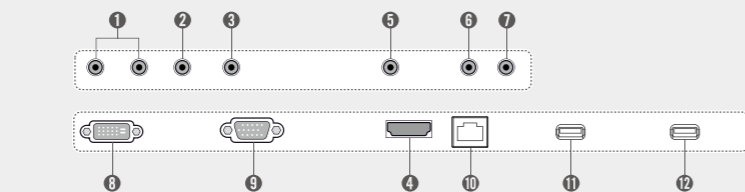
## Connectivity

- 1 SPEAKER OUT
- 2 RS-232C IN
- 3 RS-232C OUT
- 4 HDMI
- 5 EXT IR IN
- 6 AUDIO IN
- 7 AUDIO OUT
- 8 DVI-D IN
- 9 RGB IN
- 10 LAN
- 11 USB1
- 12 USB2

### 55SE3B / 49SE3B / 43SE3B / 32SE3B



### 65SE3B



Download LG Commercial Display Mobile App



More info [www.lge.com/gr/b2b](http://www.lge.com/gr/b2b)

You Tube [youtube.com/playlist?list=PLbVikgkO4Im96HZ\\_tUT3A8m\\_J5MkE-Oh](https://www.youtube.com/playlist?list=PLbVikgkO4Im96HZ_tUT3A8m_J5MkE-Oh)

LG may make changes to specifications and product descriptions without notice.  
Copyright © 2015 LG Electronics Inc. All rights reserved. "LG Life's Good" is a registered of LG Corp.  
The names of products and brands mentioned here may be the trademarks of their respective owners.



## Simple Way to Manage Your Digital Signage Standard Essential SE3B/SE3KB Series



Simplify promotion content or sales information management with the LG SE3B Serie that satisfies a wide range of display purposes in your business. This series has a practical design with a slimmer bezel and depth for optimum space utilization. Multiple screen ensure the best selection for your business environment.

## Key Features

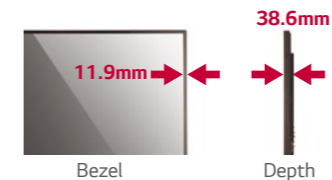
### Enhanced Design Configuration



Slim

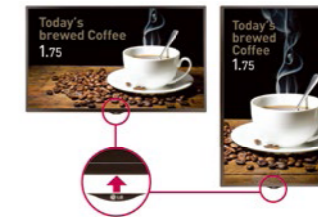
### Slimmer Bezel & Depth

The thinner bezel & depth allows a perfect fit for a sleek look.



### Detachable Logo

Portrait mode allows the logo to be positioned in the desired setting.



### Cable Management

The well-organized cable terminals in the back optimize available space.



### USB Content Management



### USB Content Scheduling

Play and schedule contents with a USB connection-no server connection required.



### Dust & Humidity Protection



### Conformal Coating

Circuit board reliability is enhanced with conformal coating that protects against dust, iron powder, humidity and other harsh conditions.



LG ELECTRONICS Ελλάς A.E. Εθνάρχου Μακαρίου 1, Δέλτα Π. Φαλήρου  
τηλ. 801 11 500 400, email: [businessb2b.hellas@lge.com](mailto:businessb2b.hellas@lge.com)

# Simple Way to Manage Your Digital Signage

## Standard Essential SE3B/SE3KB Series



**Screen Sizes**  
65"/55"/49"/43"/32"

### SE3B/SE3KB\* Series

- Edge-lit LED
- Brightness: 350cd/m<sup>2</sup> (65" 400cd/m<sup>2</sup>)
- Bezel : Top/Left/Right 11.9mm (Bottom 18.0mm)
- Depth : 38.6mm
- Special : Wi-Fi Dongle Ready, SuperSign W/C/M
- Local Time Auto Setting
- HDMI/DVD-D/RGB/RJ 45, RS232C in/out, 2 USB ports
- Embedded Media Player

\* Built-in Speaker : 10W X 10W

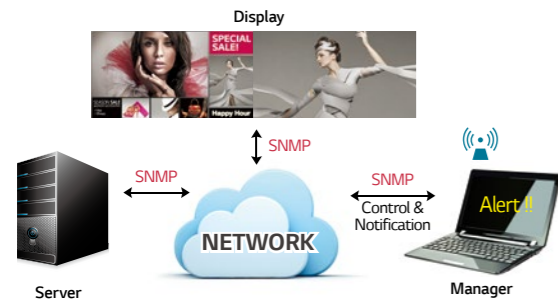


## Other Features

### Remote Management

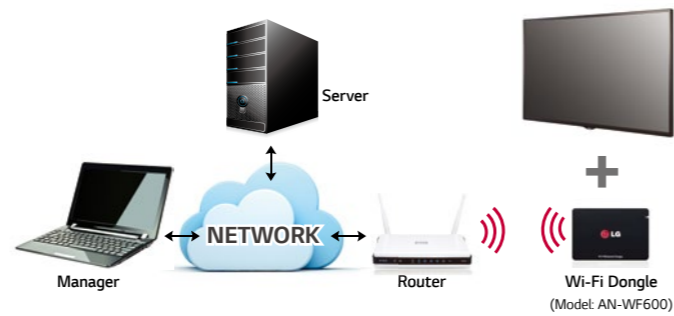
#### Simple Network Management Protocol

SNMP support ensures convenient network management.



#### Wi-Fi Support

SE3B Series support Wi-Fi USB dongle connection for convenient content distribution.



### Convenient Screen Mode

#### Aspect Ratio Sustainability\*

Sustain the same resolution and picture quality while powering on/off by receiving EDID<sup>1)</sup> through switch IC.



1) Extended Display Identification Data.

#### Stand-by Screen\*

Even without signal from the media player, the network does not turn off completely, so remote control is possible, which prevents unnecessary power usage and enables efficient management.



#### Scheduled Screen Wash\*\*

Prevent residual images with the screen transition feature.



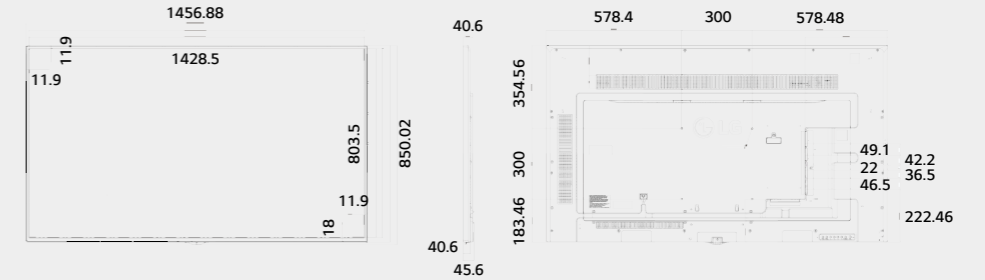
\* Installation Menu > LG Digital Signage > PM Mode

\*\* Installation Menu > ISM Method

### Dimension (unit : mm)

#### 65"

1,456.9 x 838 x 41.1 /  
27.7kg



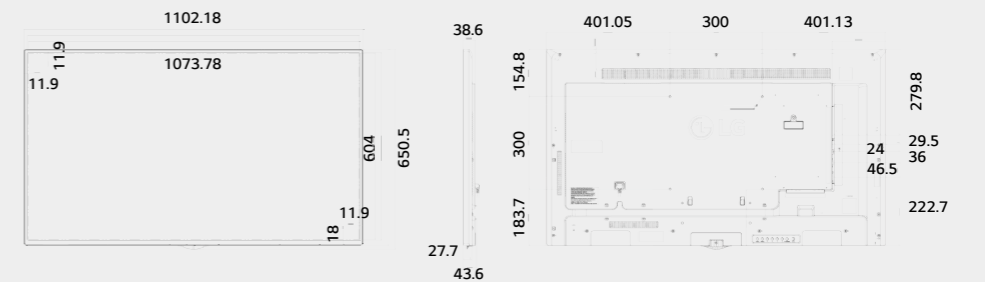
#### 55"

1,238 x 714.9 x 38.6 /  
17.3kg



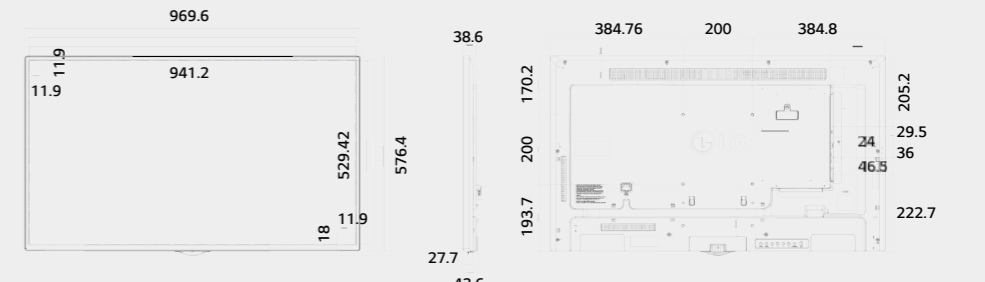
#### 49"

1,102.2 x 638.5 x 38.6 /  
14.1kg



#### 43"

969.6 x 563.9 x 38.6 /  
9.8kg



#### 32"

729.4 x 428.9 x 55.5 /  
5.2kg

