

## Q K 1 8 5 C

**1PH, 115V – 60Hz**

### Application Range

Compressor Cooling	Natural	
Eva. Temp. Range	-10°C ~ 12°C	14°F ~ 54°F
Condensing Temp.	65°C max.	149°F max.
Return Gas Temp.	35°C max.	95°F max.
Discharge gas Temp.	115°C max.	239°F max.
Motor Wire Temp.	130°C max.	266°F max.

### Rated Performance

Capacity	13,100 Btu/h	3,839 Watts
Motor Input	1,224 W	
Current	11.2 A	
EER	10.7 Btu/W.h	3.14 W/W

### Compressor Data

Design	Rolling Piston Typed Rotary	
Displacement	18.5 cc/rev	1.12 in <sup>3</sup> /rev
Oil / Oil Charge	SUNISO 4GS1 / 350 cc	
Weight	12.3 Kg	27.1 lb

### Motor Data

Motor Type	2 Pole Induction (PSC)
Rated Output	890 W
Winding Resistance (at 25°C)	Main 0.571 ±7% Ω Sub 2.053 ±7% Ω
Voltage Range	97 V to 132 V
Locked Rotor Amps.	61.0 Amps.

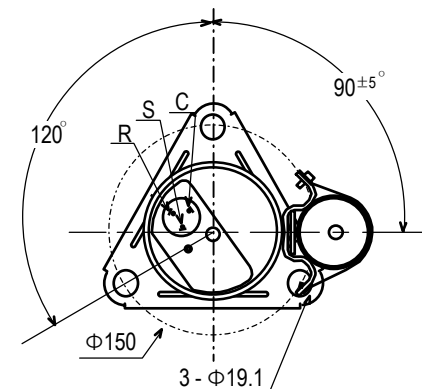
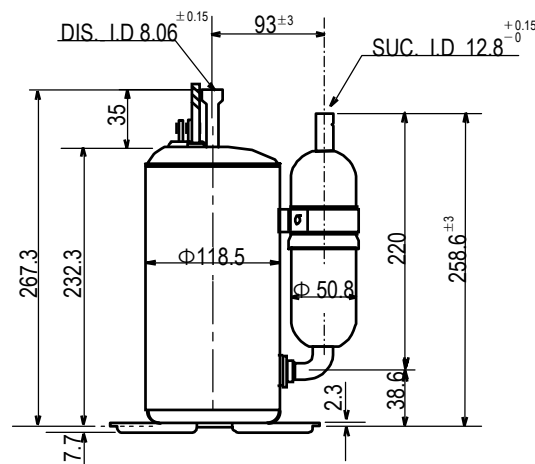
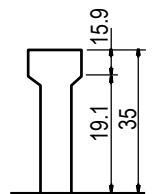
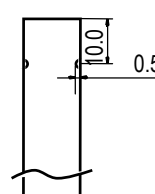
### Electrical Components

Running Capacitor	50 μF 370 VAC
Overload Protector	MRA 12053-12027 (Texas Instruments)

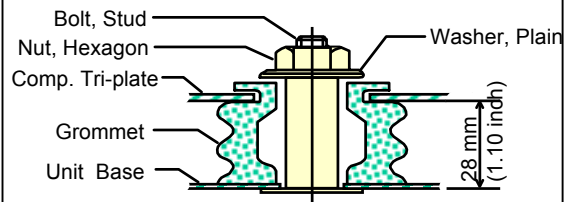
### Capacity Test Conditions

Evaporating Temp.	7.2°C	45°F
Condensing Temp.	54.4°C	130°F
Return Gas Temp.	35.0°C	95°F
Liquid Temp.	46.1°C	115°F
Ambient Temp.	35.0°C	95°F

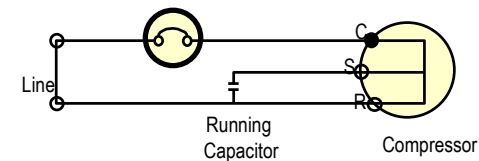
### Standard Dimensions


**Detail of (a)**

**Detail of (b)**


### Compressor Mounting



### Wiring Diagram



※ C.S.R mark is embossed on a Cover Terminal