



LG

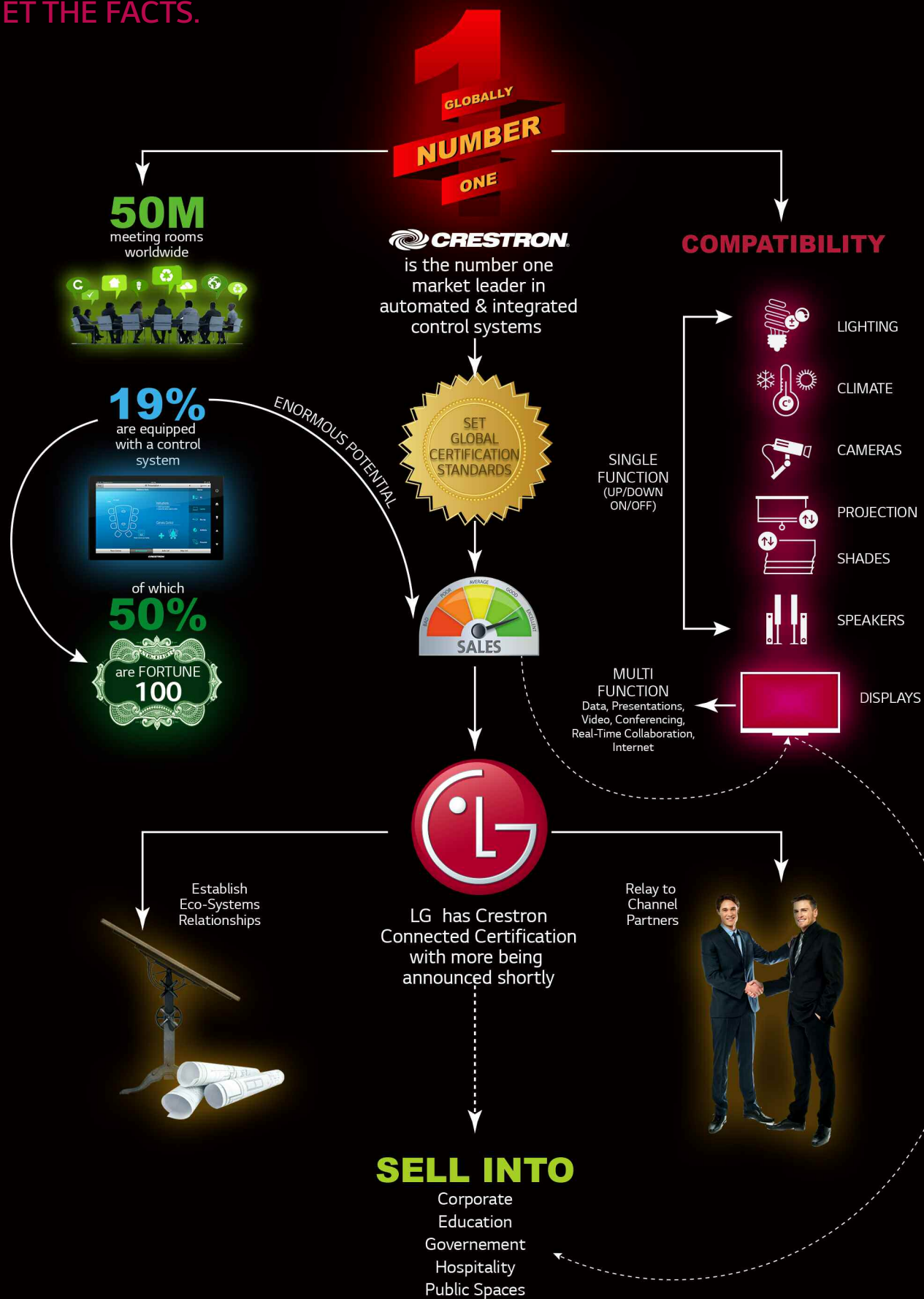
**Business
Solutions**



CORPORATE

LG & CRESTRON CONNECTED CERTIFICATION

GET THE FACTS.



LG & CRESTRON CONNECTED CERTIFICATION

CRESTRON IS THE NUMBER ONE MARKET LEADER

Crestron is the number one market leader in automated and integrated control systems that create a flawless workflow between audio visual equipment, environment accessories, and IT technologies. Crestron has also developed a global certification program that is turn-key at the engineering level, allowing certified manufacturing partners to natively connect, communicate, and monitor from one central location. This means compatible, Crestron Connected certified PC and mobile devices that are connected to the cloud can easily control Crestron Connected certified manufacturers of lighting, climate controls, cameras, shades/blinds, speakers and displays.

Companies from Fortune 100 to SMBs have invested in Crestron Solutions for their Audio Visual and IT departments because they:

- **PROVIDE** effortless and fully integrated A/V and IT environments
- **HELP** employees stay focused on their work instead of the technology to run a meeting
- **DEFINE** the perfect meeting room or public space environment that can be set up in advanced such as lighting, shades, climate, displays and all A/V equipment onsite or offsite
- Are **SCALABLE** from a small conference room to a large auditorium
- **INCREASE** productivity and maximize resources while reducing cost
- Are **COMPATIBLE** with a complete range of touch screens, remote controls, keypads and apps
- **CONNECT** seamlessly via Ethernet through the Cloud

WHY BE CRESTRON CONNECTED CERTIFIED?

Being the global leader, Crestron has the knowledge and has set the standard for meeting room and public space technology integration. Through its certification program, clients can be assured that certified manufacturers will seamlessly function with all other compatible products in the chain.

LG is excited to announce that it has a full range of Crestron Connected certified products with more products coming. This opens an unlimited opportunity for LG to enter as a number one supplier of displays and monitors globally for meeting rooms, public spaces, and IT departments.

Go to: www.lg.com/us/business/commercial-display/certifications/crestron-certified-products to find out more.





CURRENT LG CRESTRON CONNECTED CERTIFIED PRODUCTS

- **SM5C Series**
Full HD with Built-In webOS and Wi-Fi
65" Class (64.5" diag.)
55" Class (54.6" diag.)
49" Class (48.5" diag.)
43" Class (42.5" diag.)
32" Class (31.5" diag.)
- **UH5C Series**
Ultra HD Multi-Split Screen and Wi-Fi
65" Class (64.5" diag.)
55" Class (54.6" diag.)
49" Class (48.5" diag.)
- **SM5KC Series**
Full HD with Built-In webOS and Wi-Fi
65" Class (64.5" diag.)
55" Class (54.6" diag.)
49" Class (48.5" diag.)
43" Class (42.5" diag.)
32" Class (31.5" diag.)
- **LS75C Series**
Full HD with Built-In webOS
55" Class (54.64" diag.)
49" Class (48.5" diag.)
42" Class (41.9" diag.)
- **LS73C Series**
Full HD with Built-In webOSi
55" Class (54.6" diag.)
49" Class (48.5" diag.)
42" Class (41.9" diag.)
- **SM3C-B Series**
Full HD with Built-In webOS and Wi-Fi
55" Class (54.6" diag.)
49" Class (48.5" diag.)
43" Class (42.5" diag.)

UPCOMING 2017 LG CRESTRON CONNECTED CERTIFIED PRODUCTS

- **UH5C Series**
Ultra HD Multi-Split Screen and Wi-Fi
86" Class (85.6" diag.)
75" Class (74.5" diag.)
- **UM3C Series**
Ultra HD with Built-In webOS and Wi-Fi
75" Class (74.5" diag.)