

IPS Edge LED

Ultra Widescreen Digital Signage

► 29WR30MR

29" class (28.75" measured diagonally)



Features

IPS In Plane Switching

Super IPS accurately display an image's quality and color at an 178° ultra wide viewing angle. There is no fall-off in color accuracy and no diversion in contrast ratio at wide angles. From bright sunlight to the most challenging lighting environments these displays are designed to reproduce and maintain the ultimate color temperature for lifelike images.

UNIQUE APPLICATION FOR SPACE SAVING

Allows to put the display into areas which are space limited. Enable to use space more effectively & make more space for product display.

Specifications

Native Display Resolution 2560 x 1080

High Brightness 300 cd/m²

Contrast Ratio 1,000:1 (Typ.), 5,000,000:1 (DCR)

Super IPS 178° Viewing Angle viewing angle and life expectancy enhanced

Viewing Angle and Life Expectancy

RJ-45 LAN Control

Display Port, DVI-D, HDMI

RS-232C Control

Convenient External Speaker-Out

Bezel Width 1.0mm(L/R), 1.0mm(U), 16.8mm(B)

PIP

3-Year Limited Warranty Parts/Labor/Backlight

NO BLACKENING DEFECT

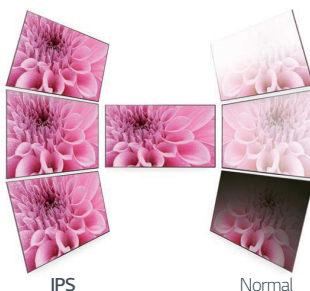
Display has a built-in temperature control that adjusts to light and heat eliminating dark or blackened areas.



If the outdoor temperature is 86°F
the surface temperature of display is 185°F

TRUE WIDE VIEWING

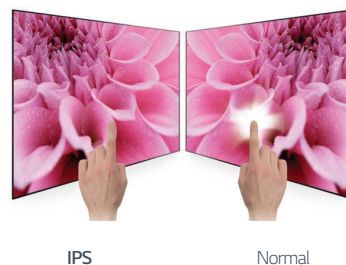
Color changes and distortion are eliminated from any viewing angle.



Color change average @ 60°
Gamma change average @ 60°

PANEL STABILITY

Minimized image distortion when external pressure is applied.



IPS

Normal

21:9 Immersive Cinematic View

An aspect ratio of 21:9 which perfectly fit to cinema screen, enables you to concentrate on movie itself. "No shadow box" enable to immerse you in the cinema.

29WR30 21:9



Conventional 16:9



Various Screen Utilization

You can use 16:9 area conventional movie streaming without any image distortion and extra 5:9 zone for information noticing. When you display two 4:3 contents on the 29WR30 screen half by half, distortion minimized.

- 16:9 zone for movie streaming
- 5:9 zone for information noticing



Maximize the Utilization of Space

Even in a districted space, such as a store shelf or low ceiling interior, 29WR30 can boast eye-catching effect with high efficient without obstructing movement of human traffic.



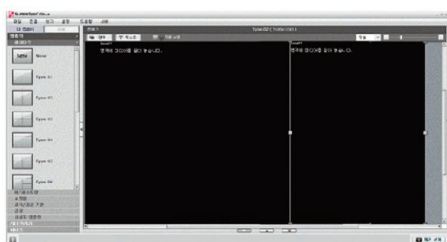
High Picture Quality & Brightness

Clear and vivid picture quality with the deepest black. Consumes approximately 40% less energy the LCD models.



Easy 21:9 Contents Creation

SuperSign S/W offers 21:9 contents creation. (comes with optional Media Player)





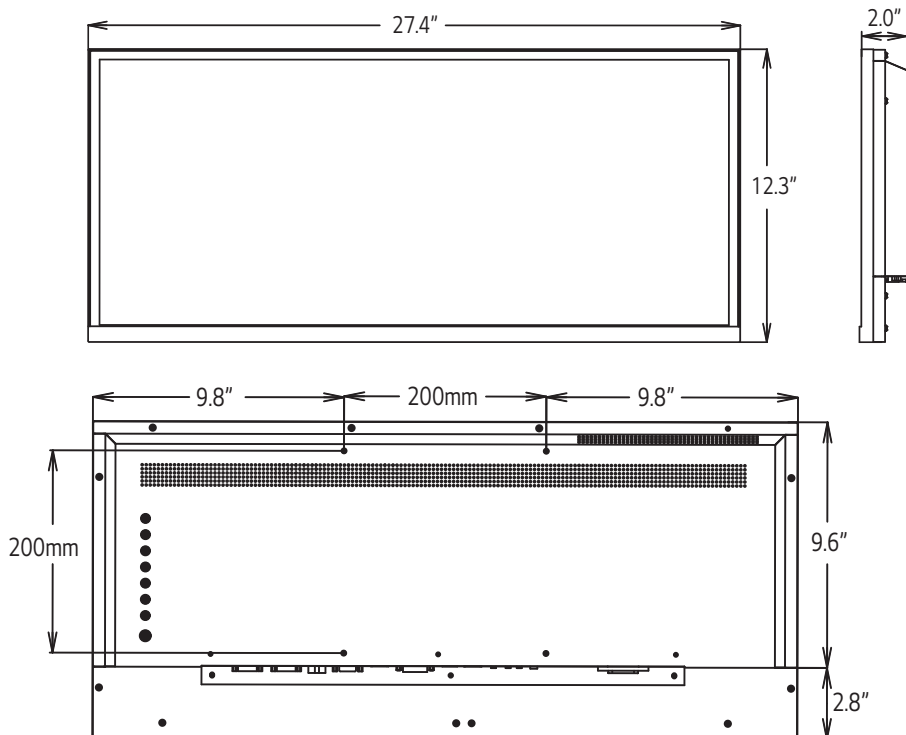
LIFE'S GOOD...

when it's green.

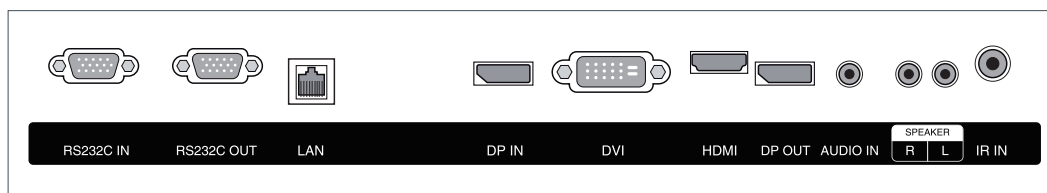
LG is committed to improving product development, manufacturing and usage to meet the demand for products with environmentally friendlier features. Our televisions have technologies to reduce power consumption and in return increase cost savings per room.

EcoSmart

- **Intelligent Sensor** - Continually monitors room light conditions to automatically optimize the picture quality for a more enjoyable viewing experience, which can help save energy.
- **Dynamic Power Savings** - Using built-in algorithms, TV will automatically reduce the power consumption based on incoming video, while maximizing picture performance.
- **Static Power Savings** - Picture brightness level can be set at the preferred power consumption level to reduce power and increase energy savings.
- **CEC Compliant** - Meets the Appliance Efficiency Regulations of the California Energy Commission.
- **RoHS Compliant** - Meets directive on restriction of hazardous substances.



Rear Jack Panel



IPS Edge LED

Ultra Widescreen Digital Signage

▶ **29WR30MR**

29" class (28.75" measured diagonally)



PANEL	Model	29WR30MR
	Panel Size	29" class (28.75" measured diagonally)
	Panel Technology	IPS
	Aspect Ratio	21:9
	Native Resolution	2560 x 1080
	Pixels (H x V x 3)	8294400
	Brightness	300 cd/m ²
	Contrast Ratio (Typ.)	1,000:1
	Dynamic CR (DCR)	5,000,000:1
	Viewing Angle	178°/178°
	Color Depth	8-bit, 16,777,216 colors
	Response Time	Max. 5ms (GTG)
	Surface Treatment	Hard coating(3H) Anti-glare treatment of the front polarizer
	Orientation	Landscape only
VIDEO(PC)	Max Input Resolution	2560 X 1080@ 60Hz(RGB,HDMI/DVI-D)
	Recommended Resolution	2560 X 1080@ 60Hz(RGB,HDMI/DVI-D)
	H-Scanning Frequency	55.6~ 83.3kHz (RGB, HDMI/DVI-D)
	V-Scanning Frequency	50 ~ 75Hz (RGB / HDMI / DVI-D)
	Pixel Frequency	185.58 MHz (RGB, HDMI/DVI-D)
	Sync Compatability	Separate / Composite / Digital
	Video Input	HDMI, DVI, Display Port
	Picture mode	Custom, Text, Photo, Cinema, Game(DVI,HDMI PC) Custom, Standard, Vivid 1, Vivid 2, Cinema (HDMI AV)
	Color temperature	Warm, Medium , Cool
INPUT (Rear)	Digital	HDMI(1), DVI-D(1) Displayport(1) with HDCP for all input
	Audio	YES(1)
	External Control	RS232C(1), RJ45(1), IR(1)
	HDTV Formats	HDMI : 720p, 1080i, 1080p
OUTPUT (Rear)	Digital	Displayport(1)
AUDIO	Auto Volume	Yes
	Audio Power	20W (10W x 2)
	Speaker on/off	Yes
CABINET	Color	Black
	Bezel Width	1.0mm(L/R), 1.0mm(U), 16.8mm(B)
	Monitor Dimensions	27.4" x 12.3" x 2.0" (W x H x D)
	Monitor Weight	15.87 lbs
	Carton Dimensions	30.6" x 15.2" x 6.1" (W x H x D)
	Packed Weight	19.62 lbs
	VESA™ Standard Mount Interface	200mm x 200mm

SPECIAL FEATURES	Model	29WR30MR
	Tile Mode	Yes
	Source Selection	Display Port, DVI-D, HDMI
	Brightness/Contrast /Backlight	Yes
	ISM Method	Orbiter
	Time	Clock, On time, Off time, Auto Off, 4 Hours Off, Sleep Timer
	Information	Yes
	Input Label	Yes (HDMI only)
	Key Lock	Yes
	DPM Select	Yes
	Energy Saving	Yes
	PIP	PIP Off / DVI+DP / HDMI+DP / DP+DVI / DP+HDMI
ENVIRONMENT CONDITIONS	Operation Temp.	0°C ~ 40°C
	Operation Humidity	10% ~ 80%
POWER	Power Supply	90-240V ~, 50/60Hz
	Power Type	Built-In Power
	Power Consumption	53 Watt (Typ) , 75Watt (With Speaker x 2)
		DPM: 1.2 Watt
		Power Off: 0.5W
STANDARD CERTIFICATION	Safety	UL, cUL, CB scheme, TUV
	EMC	FCC Class "B", VCCI, C-tick, CE, KCC
	Erp/Energy Star	Yes / NA
SOFTWARE COMPATIBILITY	SuperSign Elite-c	Yes
WARRANTY	3-Year Limited Warranty (Parts/Labor/Backlight)	
UPC	7 19192 19246 1	
ACCESSORIES	Remote Controller (Including 2ea battery), Power Cord, HDMI cable, IR Receiver, CD(Owner's Manual), ESG	



LGsolutions.com

LG Electronics USA, Inc.
HE B2B Division
2000 Millbrook Drive
Lincolnshire, IL 60069

Customer Service: 888.865.3026
www.LGsolutions.com/support

Contact your LG Regional Sales Representative:
Channel: 800.897.8871
Hospitality: 800.228.1236
E-mail: info@LGsolutions.com

SPEC_29WR30MR-B_091425_PR



All screen images are simulated. Dimensions and weights are approximate. Design, specifications, and features subject to change without notice.

© Copyright 2014 LG Electronics USA, Inc. All Rights Reserved. "LG Life's Good" is a registered trademark of LG Corp.

ENERGY STAR is a registered trademark of the U.S. Environmental Protection Agency. In Plane Switching is a trademark of LG Philips LCD Ltd. VESA is a trademark of Video Electronics Standards Association. HDMI, the HDMI logo and High-Definition Multimedia Interface are trademarks or registered trademarks of HDMI Licensing LLC.

All other product and brand names are trademarks or registered trademarks of their respective companies.

Printed in the USA September 2014