



[www.LGUSA.com](http://www.LGUSA.com)

# AX490

## Quick Start Guide



Fastap™ Keypad



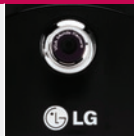
Bluetooth® Pairing



Sending a vCard



Taking & Sending a Picture



# Getting to Know Your Phone

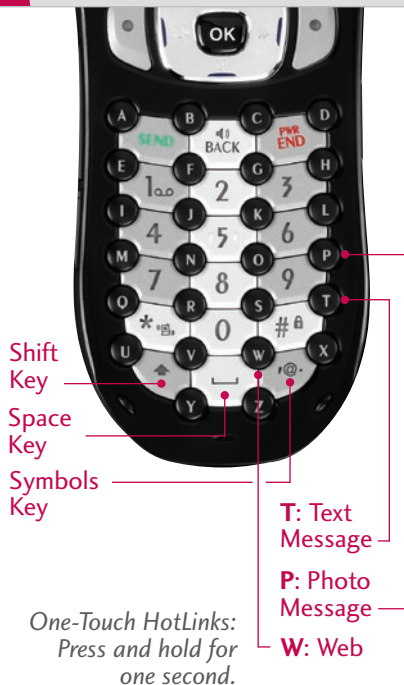


# fastap™ Keypad

Fastap is a revolutionary approach to keypad design that simplifies discovery, access, and usage of the AX490 and Alltel Axxcess<sup>SM</sup> services in a whole new way. With 26 raised letter keys and 10 traditional number keys, it's one keypad with two levels of functionality.

Whether you use one thumb or two, writing text and dialing numbers are easier on the Fastap keypad. Letter keys are spaced far apart and raised higher than the number keys making them easy to press. Number keys are larger as well for simpler dialing. Don't worry about accidentally pressing a letter key when trying to press a number key. That key tap will be ignored, thanks to Thumb Friendly<sup>TM</sup> error prevention software. So, Fastap works perfectly even "if you're all thumbs."

**Note:** Fastap elegantly supports Spanish language.



# Go Faster with Fastap

Fastap alphanumeric keys enable more intuitive shortcuts. Like pressing a letter key to access HotLink features. It's also easier to dial vanity numbers like 1-800-PIZZAMAN.

## To Letter Dial:

1. Using the Fastap keypad, type 1-866-ALLTEL7 and press **SEND**.
2. Watch the screen closely. The phone automatically converts the letters to the correct numbers.

## To Send a Text Message:

1. Press and *hold* the **T** Key for one second.
2. Enter the recipient phone number and press **OK**.
3. Enter the text with the alphabet keys. Use the **↑** Key for capitalization. For a line return, press the **@** Key, press the **Left Soft Key**, and select **LF (0)**.
4. Press **OK** to send.

## To Access the Wireless Web:

1. Press and *hold* the **W** Key for one second.



# Bluetooth® Pairing

The AX490 can connect with other Bluetooth enabled devices like headsets, speakerphones, and laptops that are nearby so you can make calls and share data wirelessly.

1. From standby mode, press the **Left Soft Key** for **Menu** and select **Settings (9)**.
2. Scroll up and select **Bluetooth (7)**.
3. Select **Paired Devices (1)**.
4. Press the **Right Soft Key** for **New** and press **OK** to search for new Bluetooth devices within range.
5. Press **OK** once again to turn on Bluetooth.
6. Once a device has been found, press **OK** to select it for pairing.
7. Enter the device's passcode (typically "0000" – 4 zeroes) and press **OK** to pair. If you don't know the passcode, consult the user manual of the device you are trying to pair.
8. Press **OK** to connect.

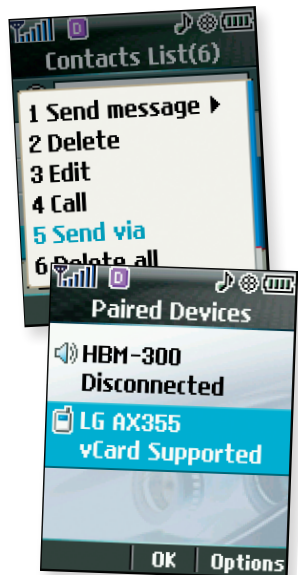


The Bluetooth trademark and logos are owned by the Bluetooth SIG, Inc. and any use of such marks by LG Electronics is under license.

# Sending a vCard


Save needless keystroking by sending contact information from your phone directly to another Bluetooth enabled device that supports vCard.



1. From standby mode, press the **Right Soft Key** for **Contacts**.
2. To go directly to contacts beginning with a certain letter, press the corresponding Fastap letter key (A–Z).
3. Highlight a contact and press the **Right Soft Key** for **Options**.
4. Select **Send via Bluetooth (5)**.
5. If Bluetooth is off, press **OK** to turn it on.
6. Scroll to highlight a paired device and press **OK** to send.




# Taking & Sending a Picture

Take rich photos day or night with the VGA camera with flash. Then let everyone else in on the fun by sending them instantly to your favorite contacts.

1. To take a picture, press and *hold* the side  **Key**.
2. Press **left** or **right** on the Navigation Key to adjust brightness and **up** or **down** for zoom\* and press **OK**. Press the **Right Soft Key** to adjust resolution, quality, flash, and multishot.
3. Press **OK** to take the picture.
4. Press the **Left Soft Key** to save or press **OK** to send.

**Note:** To take self-portraits with flip closed, press and *hold* the side  **Key**. Press side volume key to activate viewfinder and the **Voice Command/Memo Key** to turn on flash. Press  **Key** to take picture.

To view saved pictures, press and *hold* the  **Key**, then select **Gallery**.



\*Camera setting of 640 x 480 does not support zoom function.

# Optional Accessories

Accessories for productivity, convenience and fashion are available at [www.LGUSA.com](http://www.LGUSA.com).



Bluetooth Headset



Bluetooth Style-i



Bluetooth Speakerphone



Swivel Holster



Vehicle Power Charger



Extended Li-Ion Battery

©2006 LG Electronics, Inc. All rights reserved. All other trademarks are property of their respective owners. All phone images are simulated.