



LG Wine II

QUICK START GUIDE



Dedicated Hot Keys



Using Scalable Font



Bluetooth® Pairing



FM Tuner



Restrictions



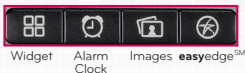
www.lgusa.com/winell



LG
Life's Good

Getting to Know Your Phone

Hot Keys



Navigation Key

- ^ Bluetooth
- ▼ My Menu
- > **easyedge**
- < Calendar

- Left Soft Key (Message)
- Speakerphone Key
- Hot Keys

- Send Key
- Vicemail Key

- Vibrate Mode/ Shift Key



*Press and *hold* the Lock Key to lock the keypad.

Dedicated Hot Keys

LG Wine II's dedicated hot keys provide quick access to convenient features. Plus, you can customize the Widget Hot Key so even more features are just a click away!

Hot Keys

Widget – Customize this key to access the notepad, calendar, and more.

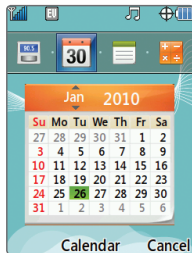
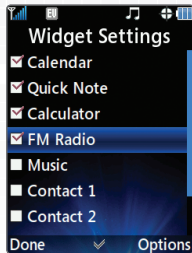
Alarm Clock – Set up to five alarms.

Images – Access photos you've taken and default wallpapers.

easyedge – download games, ringtones, pictures, and more.

Customize Widget Hot Key

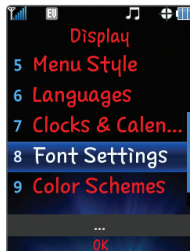
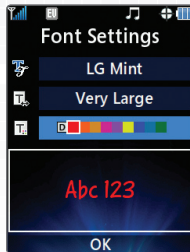
1. From standby mode and with the flip open, press **OK**.
2. Select **Settings (9)**, and then choose **Display (2)**.
3. Select **Widget (2)**, and then choose **Widget Settings (1)**.
4. From here, you may choose which widgets you'd like to add. Highlight a feature using the **Navigation Key**, and then press **OK** to mark it.
5. When you're finished marking features, press the **Left Soft Key** for **Done**.



Using Scalable Font

Font too small? Want to fit more text on the screen at once? Don't worry, you can adjust the size of on-screen text on the fly!

1. From standby mode and with the flip open, press **OK**.
2. Select **Settings (9)**, and then choose **Display (2)**.
3. Select **Font Settings (8)**.
4. From here, you may adjust the font type, size, and color by scrolling to each category and then pressing left or right on the **Navigation Key**.
5. When you're finished adjusting font settings, press **OK** to save your changes.



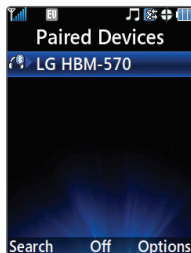
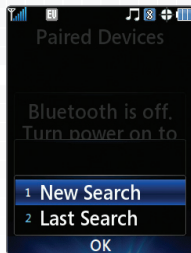
Bluetooth® Pairing

Connect to accessories, computers, and other phones via *Bluetooth* wireless technology. Once connected, you may take advantage of hands-free audio, data transfer, and other wireless conveniences.

1. Before you begin, set your *Bluetooth* accessory into pairing mode.*
2. From standby mode and with the flip open, press up on the **Navigation Key** to access the *Bluetooth* menu.
3. Select **Paired Devices (1)**, and then press the **Left Soft Key** for **Search**.
4. If *Bluetooth* power is off, press **OK** to turn it on, and then select **New Search (1)**.
5. Highlight your device and press **OK** for **Pair**.
6. Press **OK** to connect to your device.

*Refer to your *Bluetooth* accessory's user guide for information about initiating pairing mode and the passcode if asked (typically "0000").

Note: *Bluetooth* accessories sold separately.

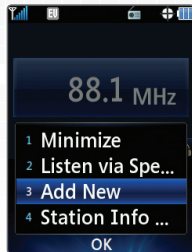


FM Tuner

Enjoy live local radio directly on your phone! Just plug in a headset and have access to a full range of stations. You can even program preset channels!

1. From standby mode and with the flip open, insert the included headset into the headset jack located on the top left corner of the phone.
2. Press **OK**, and then select **FM Radio (0)**.
3. Press **right** on the **Navigation Key** to locate a local music station.
4. To manually program a station, press the **Right Soft Key** for **Options**, and then select **Add New (3)**.
5. Press **OK** for **Save**.

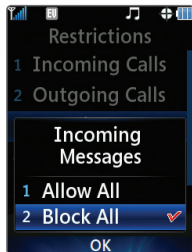
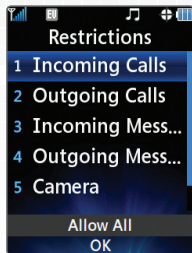
Note: To automatically scan for channels instead of manually programming them, press **OK** for **Channel**, press **OK** for **Scan**, and select **Yes (1)**. If you've already added a channel, press **OK** for **Channel**, press the **Right Soft Key** for **Options**, and select **Auto Scan (7)**.



Restrictions

Want a little privacy, or want to let someone borrow your phone—with limits? With LG Wine II, you can easily restrict incoming or outgoing calls and messages, along with several other features.

1. From standby mode and with the flip open, press **OK**, and then select **Settings (9)**.
2. Select **Security (3)**.
3. Enter the lock code (typically the last four digits of your phone number), and press **OK**.
4. Choose **Restrictions (2)**, re-enter your lock code, and press **OK**.
5. Use the **Navigation Key** to select the category you wish to restrict, and then press **OK**.
6. Select the level of restriction you wish, and then press **OK**.



Optional Accessories

Maximize your phone with these cutting-edge accessories at lgusa.com/winell.



Bluetooth Headset
(HBM-570)



*Bluetooth Solar
Speakerphone*
(HFB-500)



Vehicle Power Charger

© 2010 LG Electronics, Inc. All rights reserved. LG is a registered trademark of LG Electronics, Inc. Wine is a registered trademark of LG Electronics, Inc. **easyedge**SM is a service mark of U.S. Cellular®. microSD is a trademark of SanDisk. The *Bluetooth*® word mark and logos are registered trademarks owned by Bluetooth SIG, Inc. and any use of such marks by LG Electronics MobileComm, U.S.A., Inc. is under license. All other marks are proprietary to their respective owners. All phone images are simulated. Unless otherwise specified herein, all accessories referenced herein are sold separately.