

LG Cloud Device MANAGER

Optimized Software for LG Cloud Device



Make security more powerful

LG Cloud Devices offer greater protection of the company's sensitive and confidential information. With LG Cloud Devices, LG Cloud Device Manager helps IT managers to configure Thin Client devices such as restricting the use of unauthorized USB peripherals (storage, webcam) and preventing software installation.



Simply manage all thin clients whenever you want

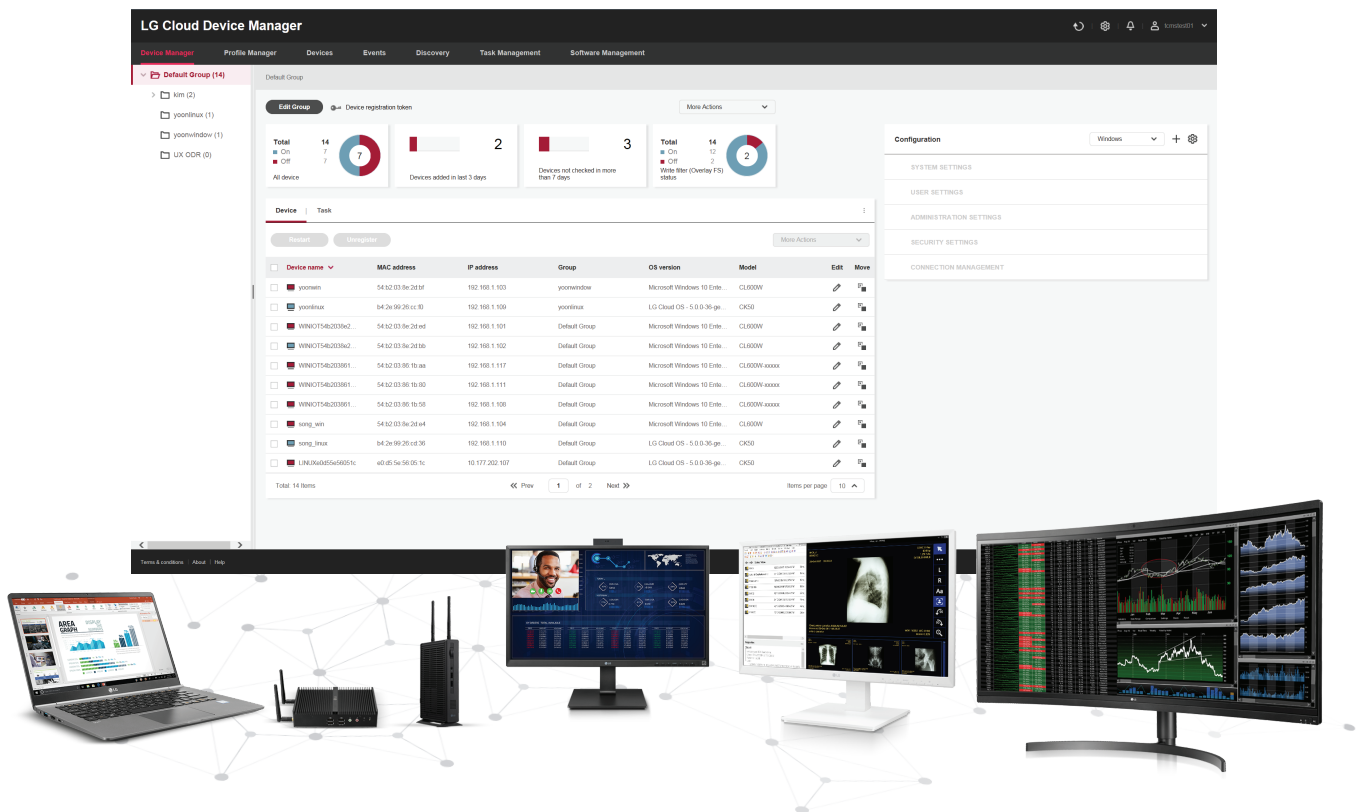
LG Cloud Device Manager offers easy and simple management of Thin Clients. IT managers are able to conveniently check the status of every Thin Client on the dashboard all at once. Web-based UI helps the administrator access and manage Thin Clients without additional installation of management programs.



Effectively reduce management work

LG Cloud Device Manager allows IT managers to manage Thin Clients easily. Centralized configuration and control through the Cloud Device Manager can save time and costs. This means IT managers can focus on other valuable tasks.

LG Cloud Device Manager UI : Simple and Intuitive



Benefit of LG Cloud Device Manager



Simple and quick installation

All necessary components are embedded in the one installation package. So, there is no need to install Database and Web Server separately. In essence, LG Cloud Device Manager can be installed and configured quickly and easily without complicated procedures.



Responsive web-based UX

No dedicated applications are required to access the management console. IT managers can use web browsers to easily access LG Cloud Device Manager and manage Thin Clients.



Quick user preferences with profile function

The user does not need to set user preferences for each device. Once the profile is set up, the profile function can be applied to endpoint devices or groups. Thus, the best user environment can be set at once.



Template function support

The Template function allows IT managers to define the list of actions they want to execute as a template. IT managers can apply a template to a Thin Client or group to execute a list of tasks sequentially, which reduces time and minimizes management errors.



Reliable and fast task execution

Perform commands faster than other management console software does. IT managers can reliably and quickly execute the tasks they want.



Thin Client management comes with asset management

LG Cloud Device Manager allows you to register and update the device and asset information with a CSV file (Device name, Location, Department, Asset ID, Description).

LG Electronics Inc.

<http://www.lge.com/b2b>

LG may make changes to specifications and product descriptions without notice.

Copyright © 2020 LG Electronics Inc. All rights reserved.

The names of products and brands mentioned here may be the trademarks of their respective owners.

Specification

• Minimum System Requirement

Category		Detailed Spec
SW Architecture	SW Components	Server (API / File-Repository / Message Broker Server, DB) SW UI Console (Browser) SW, Client Agent SW
	DB	MongoDB, MariaDB
	Web Server	Tomcat
Server Requirements	Supported OS	Microsoft Windows Server 2012 R2 ↑ (x86_64)
	Supported Browser for Console	Microsoft Internet Explorer : v.10.0 & v.11.0 Google Chrome : v.28 and later Mozilla Firefox : v.21 and later Apple Safari : v.5.1.7 and later
	Client Agent	Windows 10 IoT Enterprise
Server HW Requirements	Processor Options	Quad core, 3.0 GHz CPU (based system or above)
	RAM	Minimum 8GB
	Storage	Minimum Disk Space : 200GB
	Ethernet	1/10 GBPS Ethernet port

• Feature

Feature		Details
Install Complexity		Simple : One Package
User Interface		Simple : Intuitive UI, Easy to Use
Supported Languages		8 Language (English, Korean, Germany, French, Spain, Portuguese, Japan, China)
Maximum Connected Endpoints		Up to 10,000 Endpoints
Main Functions	Device Manager	Add Group, Edit Group/Device, Move Group/Device, Delete Group
	Device Information	System Information, System Profile, Hardware Information, Software Information, Windows Updates
	Profile Manager	Configuration Profile, System Settings, User Settings, Administration Settings, Security Settings, Connection Management
	Events	Events Activity Monitoring
	Discovery	Scan / Register / Unregister
	Task Management	Task Activity Monitoring
	Software Management	Add / Edit / Install / Uninstall / Delete
Convenient Functions	Administration	General Settings, Device Information Bulk Update, Certificate Settings, Mailer Engine Settings, File Management, Cloned Images, User Management
	Remote Control Tools	Send Message, Power Management, Wake on LAN, File Management, Clone & Deploy Image, Request Log File, Application Command, Get / Apply Registry, Apply Template, VNC



LG Electronics Inc.

<http://www.lge.com/b2b>

LG may make changes to specifications and product descriptions without notice.

Copyright © 2020 LG Electronics Inc. All rights reserved.

The names of products and brands mentioned here may be the trademarks of their respective owners.