

Pro:Centric® Server

► PCS200S



The PCS200S is a stand-alone Linux appliance that manages and controls LG's Pro:Centric Free-To-Guest (FTG) Application, delivering unique digital content to hotel guest room TV's via the existing RF or IP distribution network.

The PCS200S can also be used to remotely edit the FTG televisions' channel map and installer menu configuration, dramatically reducing installation cost and future room visits.

Utilizing a spare RF channel for communications, the PCS200S broadcasts it's information to Pro:Centric enabled TVs enabling guests to select customized content for in-room viewing using the TV remote control, such as hotel amenities, daily weather, and interactive electronic program guide (EPG). The appliance captures data updates via the Internet to populate its EPG, weather forecast and other services, enabling the most up to date information to be presented to the guests' TVs.

The PCS200S now supports eight contiguous 256-QAM channel output. One QAM channel is allocated for Pro:Centric data delivery and the other seven provide the ability to play 2 or 3 videos per QAM channel for a maximum of 21 video stream playouts from the server (depending on the bit rate and bandwidth). A dedicated Ethernet output port is also provided to enable multi-cast broadcast of content over an IP network. Video files can be stored on a customer-supplied Solid State Disk Drive (SDD), which can be plugged directly in to the PCS200S (contact LG for further information).

The Pro:Centric server also supports delivery of 3rd Party developed Applications (Java™/Adobe® Flash®) from LG's to Pro:Centric televisions, "OEM Mode".

Features

Simple Installation

Uses the existing RF/IP network, internet connection input, and modulated RF (QAM), IP or ASI output

Minimal Head-End Rack-Space

Small, lightweight chassis, 1U height profile, 19-inch rack-mountable

High Reliability

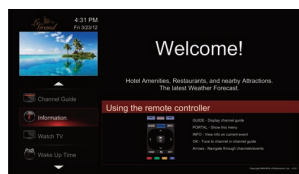
The PCS200S design has 'no moving parts' with solid state memory and no internal disk to provide a highly reliable hardware platform.

Remote Support

Remote administration, configuration, and maintenance via VPN server; Management of television channel map and installer menus

(New) Supports PCA Pro:Centric Application (PCA) V3.0

PCA 3.0 such as New Classic Premium Template with improved navigation scheme, and presentation of up to forty billboards which can be nested under title buttons and up to two information sections.



Welcome Page



Weather Billboard



Customized Billboard



Map Billboard

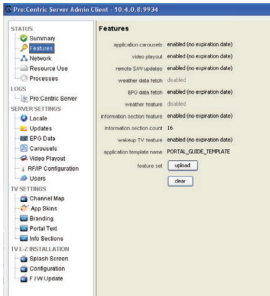
Pro:Centric Server

PCS200S

SERVER ADMIN CLIENT

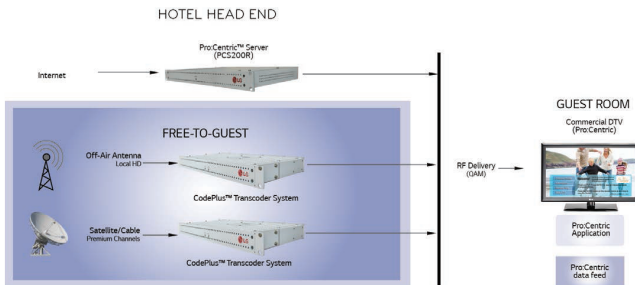
An Admin Client Graphical User Interface (GUI) is provided and is remotely accessible via the Internet using VPN service and a standard web browser, to provide System Integrator administration users with a full suite of features to manage and support the Pro:Centric system, including:

- System status and logs, and server settings
- Configuration for Channel Guide lineup
- Hotel branding and Billboard creation and editing
- Managing television configurations settings and software updates



For further details, refer to the Pro:Centric™ Server Admin Client User Guide, P/N: 206-4143, (also accessible on the system).

TYPICAL FTG Pro:Centric PCS200S INSTALLATION



PRO:CENTRIC VPN SERVER

Remote management of the PCS200S server functionality is provided via a secure, built-in VPN client that connects to the centralized VPN server. In this way, remote configuration management, remote software updates and other services are supported. Free hosting of the service is provided by LGE during the warranty period. Extended support plans are available.

INSTALLATION REQUIREMENTS:

Installation of the PCS200S requires the following:

- 1U rack space in the Head-end room
- Ethernet Connection (VPN and FTP open)
- 1 x 110/120VAC power outlet
- 1 coax drop to the RF combiner to feed the output of the server into the RF network

Note that no local monitor or keyboard is required for the server.

For further details on the Server installation, refer to the Installation & Setup Guide, Part No: 206-4142.

Please contact your LG sales representative for a list of compatible Pro:Centric television models.

SYSTEM SOFTWARE	Model	PCS200S
	Software	Linux OS kernel 3.4 Globally Executable MHP(GEM) server applications
ENVIRONMENTAL STORAGE CONDITIONS	Data Output	ASI,RF(256 or 64 QAM), 100/1000T Ethernet
	Rear Port	ASI/RF/RF Test/TTL serial/USB 1 Port, Ethernet 2 Port
ENVIRONMENTAL OPERATING CONDITIONS	Storage Temperature	-4° to 158° Fahrenheit (-20° to 70° Celsius)
	Humidity	95% Non-condensing
ELECTRICAL	DC Input	+1.2V DC @ 3.25 Amps Adaptor
	RF Output Connectors (2)	75 Ohm, Type 'F'
	RF Output Frequency Range	VHF/UHF 54-865 MHz
	RF Output Span	Up to 8 Contiguous Channels (Typically 48-64 MHz)
	RF Output Level	-6 dbm (+42 dbmV) Minimum, -2 dbm (+46dbmV) Typical
	0 dbmV RF Output Level	-48.75 dbm (0dbmV) Typical
	Frequency Accuracy	5 ppm
	ASI Out Jack	75 ohms, BNC
	Level at ASI Out Jack	800 mv
	Ethernet Connector (Control Port)	10/100/1000BaseT, RJ45
MODULATION SPECIFICATIONS	Ethernet Connector (Feature Port)	100/1000BaseT, RJ45
	USB Port	USB 2.0
	RS-232 Serial Audio Jack	Command Line Interface port (5V TTL)
	Standard Constellations	ITU-T Annex B (QAM-B) 64-QAM, 256 QAM
	Symbol Rate	64-QAM 6.900 Mbaud 64-QAM 5.360537 MBaud
	Interleaving Standard	Fixed I=128, J=1 EN 300 429 V1.2.1 (DVB-C)
	Constellations	64-QAM, 256 QAM
	Symbol Rate	64-QAM 6.900 Mbaud 64-QAM 6.111 Mbaud 256-QAM 6.900 Mbaud 256-QAM 6.111 Mbaud
	WARRANTY	1 Year
	CERTIFICATION	Regulatory Compliance FCC, UL, RoHS
DIMENSIONS	Unit Dimension (WxHxD, mm)	19.0" x 1.7" x 8.5"
	Unit Weight (Rack-only)	5.65 lbs.
UPC CODE		7 19192 91554 1

REAR VIEW

