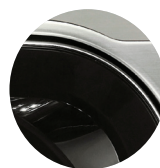


LSWF388HVS

SteamWasher™



Great Performance, Great Style

SMART TECHNOLOGY

- 4.8 cu.ft. Ultra Large Capacity with NeveRust™ Stainless Steel Drum (IEC)
- Direct Drive Motor (10 Year Warranty)
- TrueBalance™ Anti-Vibration System
- TrueSteam™ Technology
- 1400 RPM
- Allergiene™ Cycle
- SteamFresh™ Cycle
- ColdWash™ Option
- 6Motion™ Technology
- LoDecibel™ Quiet Operation
- Highly Energy and Water Efficient
- Wash/Rinse Optimizer™
- SenseClean™
- RollerJets™
- 14 Washing Programs
- 5 Temperature Levels
- Sanitary Cycle with Added Steam Option
- Delay Wash (up to 19 hours)
- 10° TiITub™

STYLISH DESIGN

- Intelligent touch control buttons with Large Color LCD Display and Dial-A-Cycle™
- White LED Tub Light
- Large Chrome Rimmed Door with Glass
- Stackable with Matching Dryer
- Optional Matching Drawer Pedestal



● Graphite Steel (V)



LG
Life's Good

LSWF388HVS

SteamWasher™



COLDWASH™ Option

Cold Water Savings with Warm Water Performance

Now using the cold cycle on your washer doesn't mean compromising how clean your clothes are. ColdWash™ option uses cold water to penetrate deep into fabrics, while saving you money on your energy bill. Cold water savings with warm water performance.

6MOTION™ Technology

Get your clothes cleaner and give them a longer life with revolutionary 6Motion™ technology. 6 different wash motions work harder than ever to knock out dirt without being hard on fabrics.

Direct Drive Motor

Power is delivered right to the drum from the motor without belts, resulting in a highly durable, powerful and quiet washing machine.

Allergiene™ Cycle

The power of TrueSteam™ penetrates fabrics for enhanced cleaning performance and also reduces allergens by more than 95% with LG's exclusive Allergiene™ cycle.

TrueSteam™ Technology

LG's TrueSteam™ generator provides powerful, yet gentle steam for advanced cleaning performance.

TrueBalance™ Anti-Vibration Technology

The TrueBalance™ Anti-Vibration system is designed to minimize washer vibration for smooth, quiet performance in just about any room of the house – even on the second floor.



CAPACITY	
Capacity*	IEC 4.8 cu.ft.
APPEARANCE	
Design Look	Front Control
Intelligent Touch Controls with Large Color LCD Display	•
Dial-A-Cycle™	•
ENERGY	
Energy Star Compliant	•
WASH PROGRAMS	
14 Programs	SteamFresh™, Allergiene™, BrightWhite™, Heavy Duty, Sanitary (158°F), Bulky/Large, TubClean+, Towels, Cotton/Normal, Perm Press, Delicates, Hand Wash/Wool, Speed Wash, Rinse + Spin
5 Wash/Rinse Temps	Warm/Warm, Warm/Cold, Cold/Cold
Spin Speeds	Extra High (1400 max), High (1260/1160/1100/1050/1000), Medium (1100/1000/600), Low (1050/600/400), No Spin
No. of Water Levels	Automatically adjusts to size of load
No. of Soil Level	5
13 Options	Prewash, Extra Rinse, StainCare™, ColdWash™, FreshCare™, Water Plus, Drum Light, Delay Wash (up to 19 hours), Steam, Custom Program, Child Lock, Wash/Rinse Optimizer™, Language
FABRIC CARE FEATURES	
Allergiene™	•
SteamWash™ System	•
SenseClean™ System	•
RollerJets™ and Forced Water Circulation	•
CONVENIENCE FEATURES	
4 Tray Dispenser	Prewash, Main Wash (with liquid detergent cup), Bleach, Softener
LoDecibel™ Quiet Operation	•
End of Cycle Beeper	•
Child Lock	•
Tub Light	White LED
TrueBalance™ Anti-Vibration System	•
TubClean+	•
LoadSense™	•
Auto Suds Removal	•
Forced Drain System	•
Status Indicator(s)	•
Internal Water Heater (1000W)	•
TrueSteam™ Generator	•
Leveling Legs	4 Adjustable Legs
Easy Loading TilTub™	•
MOTOR AND AGITATOR	
Motor Type	Direct Drive Motor
Motor Speed	Variable
Axis	Horizontal
MATERIALS AND FINISHES	
NeveRust™ Stainless Steel Drum	•
Cabinet	Painted Steel
Control Panel	Plastic
Top Plate	Porcelain (V)
Transparent Door Glass	•
Door Rim	Chrome with Silver Edge
Available Colors	Graphite Steel (V)
POWER SOURCE	
Ratings	UL Listed
Electrical Requirements / Type	120V, 10 Amps / Electric
OPTIONS	
Pedestal	WDP4V
Pedestal (WxHxD)	27" x 13 3/5" x 28 2/5"
Stacking Kit	SSTK1
DIMENSIONS	
Product (WxHxD)	27" x 38 11/16" x 29 3/4" (51"D with door open)
Carton (WxHxD)	29 1/2" x 42 1/4" x 31 1/4"
Weight: Product / Shipping	213.8 lbs. / 232.3 lbs.
WARRANTY	
	2 Years Parts and Labor, 10 Years Motor, Lifetime on Drum
UPC CODES	
LSWF388HVS Washer – Graphite Steel	48231011259
WDP4V Pedestal – Graphite Steel	48231011198

*Per IEC 60456 washes the equivalent of 4.8 cu.ft. conventional agitator washer.

www.LG.com

LG Electronics U.S.A., Inc.

1000 Sylvan Avenue Englewood Cliffs, NJ 07632
Customer Service and Technical Support: (800) 243-0000

Dimensions and weights are approximate. Design, features and specifications subject to change without notice.

© 2010 LG Electronics USA, Inc. All rights reserved. "LG Life's Good" is a registered trademark of LG Corp. All other product and brand names are trademarks or registered trademarks of their respective companies. 07/10