

Ultra-Narrow Bezel Video Wall-49VM5C



Easy Ways to Elevate Your Corporate Identity in 2018

TABLE OF CONTENTS

Image Is Everything	3
Common Areas	4
Conference Rooms/Boardrooms	6
Huddle Rooms	8
Employee Workstations	9
Ask About LG AutoCAD Drawings	10
Elevate Your Corporate Identity with LG	10



Image Is Everything

Corporations are always on the lookout for new ways to set themselves apart from the competition, increase employee engagement and empowerment, and improve productivity and the quality of the work. LG commercial displays can help.

Beginning with the common areas and extending to conference rooms of any size to employee workstations, LG offers a full suite of innovative

commercial displays in a wide range of sizes that are ideal for corporate environments. Built for durability and long-term operation, these attention-grabbing displays are easy to install, integrate and manage, and your employees will benefit from the outstanding picture quality and reliability that are hallmarks of LG commercial displays.

Common Areas

The Lobby

The lobby is the first place employees, clients and visitors see, and it presents great opportunities to elevate a corporation's brand image.

LG large format displays and video walls can be used in the lobby and other common areas to make a powerful first impression, delivering breathtaking images and crisp, clear messaging along with a wow factor that's sure to command attention. Greetings, motivational content, company news and videos and real-time data feeds can engage and impress clients and visitors and boost employee morale. What's more, 4K UHD display technology is an impressive alternative to traditional print-based art. These displays represent the most flexible solution for architects and designers to create an unforgettable experience in virtually any space.

Large Format Displays. With incredibly detailed pictures and stunningly bright colors, large format 4K UHD displays could be exactly what you need to create an unforgettable environment. A long-time innovator

in commercial displays, LG offers large format 4K UHD displays with LG's proprietary IPS screen technology from 65-inch all the way up to 98-inch class sizes, including head-turning 32:9 and 58:9 stretched models. These state-of-the-art displays are ideal for brands wanting an effective solution that can integrate seamlessly, be centrally managed, and revitalize the facility.

Video Walls. A video wall is a configuration of usually four or more individual displays placed adjacent to each other and synched together to create a single, impressively large video image. In recent years technology improvements and engineering breakthroughs have allowed for thinner display bezels that create a nearly seamless look where the adjacent displays meet. For maximum effectiveness in a video wall configuration, LG offers some of the most advanced thin and ultra-thin bezel displays with breathtaking image quality.



IPS (In-Plane Switching). IPS is LG's proprietary LCD screen technology that enables a true 178-degree wide viewing angle where colors are accurate and text is crisp. When employees, clients or visitors approach the display from an off-center distance, even extreme angles, IPS image quality attracts their attention and draws them to the display. Another IPS advantage is that the displays use less energy and run cooler than conventional non-IPS displays.

Create and Manage Content with webOS for Signage.

LG's webOS for Signage is a commercial all-in-one hardware and software platform built on the popularity of our consumer webOS smart TV platform. But webOS for Signage brings a new level of integrated benefits for businesses that deploy LG digital signage. LG large format displays and video wall displays feature high-performance system-on-a-chip (SoC) which works with webOS for Signage to lower the cost of ownership by eliminating the need for PCs or external media players. Systems integrators can download content and develop customized applications that fit their exact needs, and update it simply and quickly via a smartphone or tablet.

Industry-Leading Service and Support. Businesses can stay protected and connected with extended coverage, comprehensive options, quick swap and white-glove service via LG's Enhanced Service Program (ESP). Hospitality and Education customers can experience optimal uptime and full-service, real-time, on-site support with LG's Five-Star Service program.

Hallways and Elevator Banks

Wayfinding displays are perfect for orienting visitors and getting them to where they need to be. Large wayfinders can direct guests throughout the facility, while small 22-inch displays outside of conference rooms can integrate with existing scheduling programs and show meeting times and subject matter. While the



visitors are waiting, digital displays can immerse them in the corporate message and branding.

Cafeterias

Like a quick-service restaurant, corporate cafeterias need to keep the lines moving so employees can relax, enjoy their meal and get back to work on time. Take advantage of what the QSR industry knows best – LG commercial displays excel as digital menu boards. With the IPS high image quality and wide viewing angle, employees will clearly see the mouthwatering images, menu list, daily specials and nutrition information while standing in line and speeding through their order.



Conference Rooms/Boardrooms

For presentations, training and videoconferencing applications, large format 4K UHD displays are the ideal solution because of the image quality and future-proofing they provide. LG has a family of multi-tiered solutions ranging from prosumer-duty UX series displays to heavy-duty UH5C series displays that can be scaled up or down depending on your needs. LG 4K UHD displays feature auto detect functions that sense when a notebook is plugged in, a standby screen that can be branded with your company's logo, plus full compatibility with industry-leading control platforms.

LG's 98-inch 4K UHD display is the world's largest single display that can be purchased for a conference room. Corporations looking for something even bigger can opt for a 2x2 LG video wall or a massive indoor direct-view LED with 1 mm pixel pitch.

Videoconferencing Areas

4K UHD is extremely important for videoconferencing applications. Corporations are sharing their branding

elements, product images, marketing materials and other information, and the 4K UHD color gamut provides a major advantage in more faithful reproduction of custom colors. LG's In-Plane Switching (IPS) technology is also a major advantage for everyone in the room as it delivers a true 178-degree wide viewing angle where colors remain vivid and accurate, and text stays crisp. Additionally, LG's UH5-C series displays can be calibrated for image-to-image consistency across multiple screens in the same room.

Enabling Conference Room Automation

LG offers a host of commercial displays that are Crestron Connected® certified and compatible with Cisco, Extron and Hoylu technologies for seamless integration and automated control. These displays eliminate the significant expense and time required to set up a display at the systems integrator level.



Crestron automation and control solutions let people control entire environments. With a Crestron control unit on the front end, a presenter can enter the meeting room, plug a wireless dongle into his or her notebook, and then turn on the LG display, dim the room lights and close the blinds with the push of a button. www.crestron.com

Cisco brings automated simplicity and security to the videoconferencing area, linking several types of components together into a control system that enables employees, customers and partners to collaborate from anywhere with highly scalable voice, video and content sharing. www.cisco.com

Extron Electronics is a leading manufacturer of professional A/V signal processing, distribution and control products. Their control platform is a robust solution that offers flexible configuration capabilities and exceptional ease of operation, complementing LG's advanced display technologies. www.extron.com

Hoylu cloud-based immersive workspaces bring teams together for easier, more effective collaboration. The Hoylu Suite is designed to make digital work simple, seamless and hassle free. Create plans, complete design reviews, analyze large data sets. Powerful templates and libraries personalize the experience. hoylu.com

Huddle Rooms

LG offers a family of smaller displays that are ideal for huddle rooms. LG's 4K UHD UH5C Series models are perfect for small meeting presentations, and for collaborating on electrical design, blueprints, architecture and any type of engineering thanks to the high-resolution images that show every last detail.

4K UHD also allows viewers to sit closer to the display without seeing the pixels that make up the image. In huddle rooms people may be sitting four to five feet from the screen, and 4K UHD gives them an incredible canvas to work with. What's more, LG can provide a touchscreen experience with various overlay products.

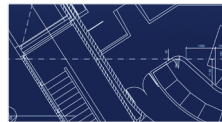
For making the most of a tight budget, LG offers a full line of prosumer Full HD 1080p displays up to 65-inch class that offer outstanding value, flexible connectivity and ease of use for huddle rooms. What's more, LG's Wi-Fi-enabled displays can support Miracast.

LG IPS Interactive Digital Boards (IDBs) with 4K UHD picture quality are also ideal for team meetings as they facilitate active participation. LG IDBs have advanced touch-enabled interfaces with precise writing performance that allows for multiple users to write simultaneously and freely share ideas with intuitive touch technology for maximum productivity and convenience.

Why 4K for Corporate Communications?



The ability to get up close to the screen without seeing the pixels that make up the image is one of the most exciting and engaging benefits of a 4K display.



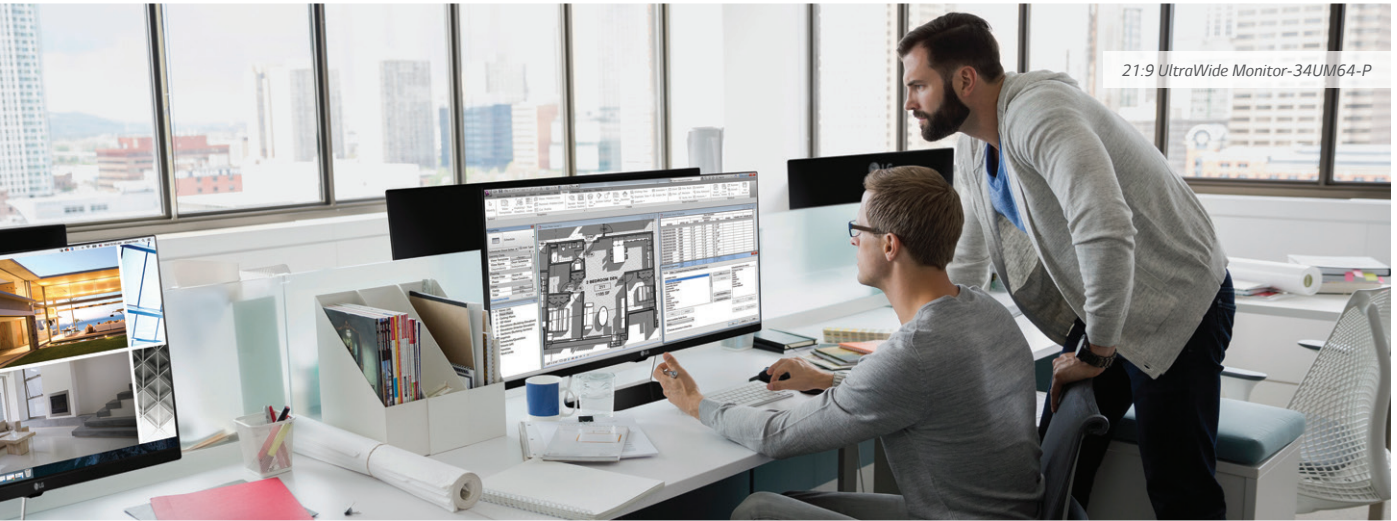
4K UHD panels can resolve Excel spreadsheets and CAD drawings in a high-resolution format offering excellent clarity.



4K UHD panels can more faithfully reproduce branding and product colors.



For visitor and employee areas, 4K UHD display technology is an impressive alternative to traditional print-based art. 4K displays represent the most flexible solution for architects and designers to create an unforgettable experience in virtually any space.



Employee Workstations

Today it is common for designers, artists, security professionals and others to work with multiple monitors on their desks. Replacing multiple monitors with a single LG 21:9 UltraWide® monitor in sizes from 24- to 38-inch class will enable users to maximize multitasking with as many programs as they like, and numerous video feeds, on one screen at the same time. A four-screen split function divides the screen from two to four customizable sub screens of the user's preferred size, without any overlapping of windows. Reducing the overall number of monitors can cut equipment costs and your company's energy usage too.

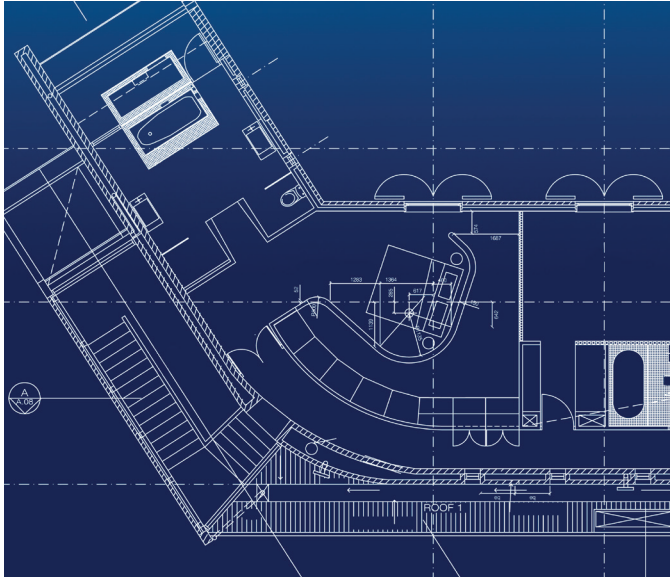
UltraWide monitors join LG's newly expanded family of 4K UHD commercial desktop monitors, including 43-, 32- and 27-inch class units.

If you're looking to increase data security and slash costs even further, LG's Thin Client and Zero Client cloud computing solutions can help eliminate security problems, most hardware problems and maintenance issues.

LG's new family of Thin Clients includes all-in-one (AIO) monitors with keyboard and mouse, ultra-lightweight

laptops, and small desktop control boxes that convert conventional monitors into Thin Clients. These devices are used as PC replacements to give end users access to any virtual desktop or virtualized application and give businesses a cost-effective way to create a virtual desktop infrastructure (VDI). A VDI with LG Thin Clients offers top-notch security, ease of management via included management console software, and a low total cost of ownership.

LG V series Zero Client monitors and desktop control boxes do not have CPUs, hard drives or operating systems. They use a Teradici® TERA 2 Chipset, run on PCoIP® (PC-over-IP), which internally manages software updates, and connect to a cloud-based server (self-hosted or a subscription service), such as Amazon Web Services (AWS) or VMware®, to deploy desktop functions from the cloud. Easy to deploy, manage and operate, LG Zero Clients decode PCoIP transmissions and output pixels on the screen without transmitting the data. Users enjoy a secure and rich virtual computing experience.



Ask About LG AutoCAD Drawings

To facilitate collaboration across desktop, cloud, and mobile, LG offers free AutoCAD files of commercial display products in both 2D and 3D models, using precise lines to create basic geometry that represents real life. Architects, designers and construction professionals can use these drawings for designing architectural plans for construction purposes or building structures to be replicated in real time.



Elevate Your Corporate Identity with LG

With expert vertical market managers and application engineers, LG offers commercial display solutions tailored to the ever-changing corporate market. We will help identify your specific needs and guide you through the development of a turnkey solution. The benefits of LG commercial displays in the corporate environment are well worth the investment and can bring significant ROI in terms of a stronger brand image, higher employee morale, increased collaboration and improved productivity. Learn more at lgsolutions.com

Let's work together.



© 2018 LG Electronics USA, Inc. 1000 Sylvan Ave., Englewood Cliffs, NJ 07632
All rights reserved. All other trademarks are the properties of their respective owners.
Screen images are simulated.

