



Why Your Customers Need  
LG Thin Clients

# Table of Contents

---

The Case for Thin Clients.....	4
Introducing LG Thin Clients.....	6
Ideal Environments for Thin Clients.....	7
Why LG.....	7
Conclusion.....	8
2018 LG Thin Client Products.....	9

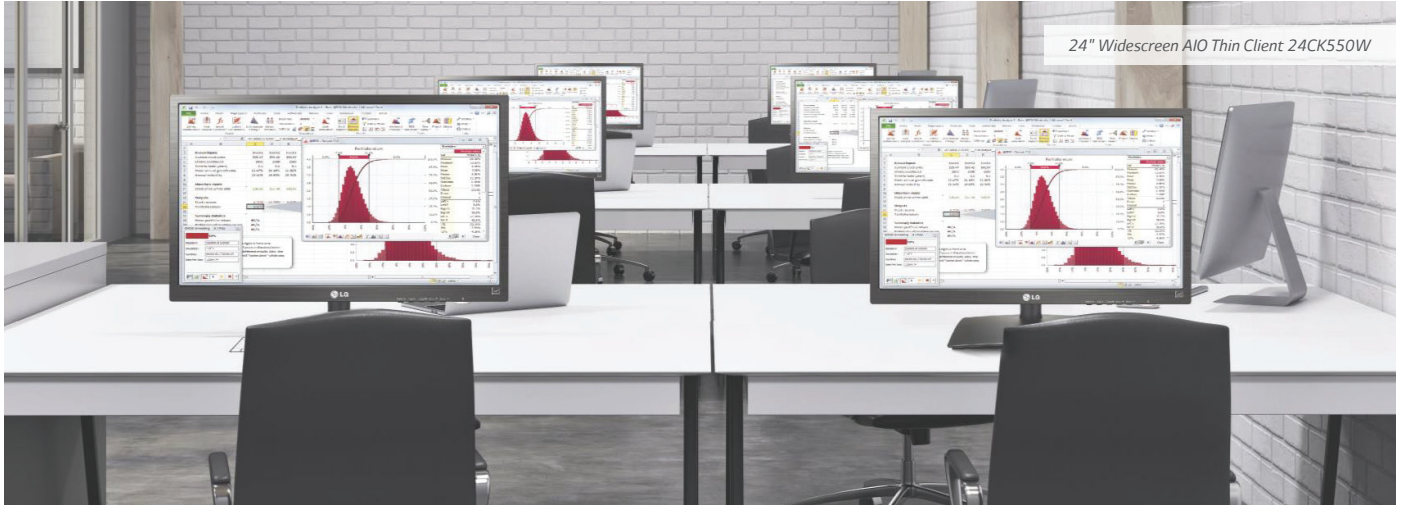
# Introduction

---

Today, as more and more business applications are moving to the cloud, businesses are moving to a model where the data follows the user, rather than the user following the data. The world of off-site data centers offering Desktop as a Service (DaaS) is growing as well, with the likes of Microsoft Azure, Amazon WorkSpaces, VMware®, Google and others.

As secure data transfer increasingly becomes a focal point in the IT industry, LG has expanded its commercial desktop monitor portfolio to include new Thin Client endpoints. LG Thin Clients create new opportunities for channel partners to meet the evolving needs of end users across a variety of industries.

The new LG Thin Client products include all-in-one (AIO) devices with keyboard and mouse, ultra-lightweight laptops, and small desktop boxes. They can create highly productive work environments that bring numerous benefits to the businesses you serve.



## The Case for Thin Clients

---

Thin Clients are used as PC replacements to give end users access to any virtual desktop or virtualized application and give businesses a cost-effective way to create a virtual desktop infrastructure (VDI). A Thin Client is a trimmed-down version of a PC, and part of a network. It acts as an interface for a company's data center where the files, data, applications, controlled functions and real computing power reside. Thin Clients are compatible with multiple hypervisors such as Microsoft, VMware® and Citrix®, and give an IT department many different options for applications to be used, as well as the ability to manage and scale a fleet of them from a centralized location.

Thin Clients make a great addition to any education, healthcare, government, corporate or financial services business where the utmost security of highly confidential data is crucial. They are also ideal for environments with numerous employees and well-defined functions/highly structured tasks, such as call centers. A VDI with Thin Clients offers key benefits over a traditional PC:

### High Security

TPM (Trusted Platform Module) authentication security is embedded in the Thin Client device. Thin Clients are protected from user installation of unauthorized applications, and data cannot be copied to or saved to any location other than the server if IT has turned off the device's USB ports. IT can also lock down a particular device if it is lost or stolen.

Data, software and applications in the server are easily firewalled, monitored and protected and the IT department can enable multi-factor authentication, data encryption, anti-spam/virus/malware protection, and intrusion protection and detection.

Thin Clients also offer companies a great deal of control over application installations and configuration management, user administrative privileges, user access to specific content and websites, and which devices can send out sensitive information.

Conversely, in a large company with thousands of PC users, every one of those PCs is a potential open

gate for hacking, viruses, malware or ransomware. Unauthorized software can be downloaded, sensitive data can be unscrupulously copied, and the devices along with their data can be lost or stolen.

### Ease of Management

A VDI with Thin Clients greatly reduces the burden on IT departments. Using the robust Fusion UDM Professional management console software included with LG 24-inch AIO Thin Client and LG Thin Client Box, the IT department can easily manage and monitor every Thin Client device on the network from a central location, whether it's a few hundred units in one building or thousands of units spread out across the globe. Security updates, software patching and application/OS updates can be applied, tested and activated for all users at once.

With LG Thin Clients and a powerful VDI, IT technicians no longer need to go from desk to desk troubleshooting, supporting and maintaining PCs. Users at remote locations do not have to ship their

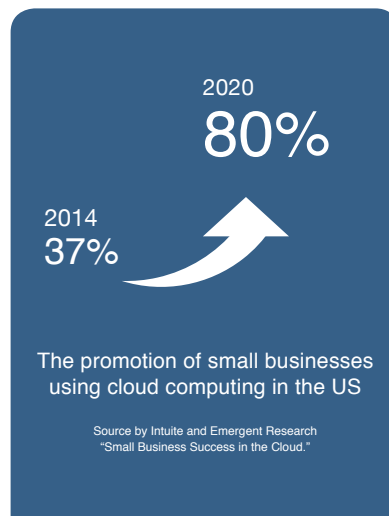
devices in for updates. What's more, a damaged, lost or stolen device can be replaced with a preconfigured device that is up and running in minutes, saving valuable time and productivity.

### Cost Savings

Besides having a lower total cost of ownership (including product, operation, licensing and administration) than PCs, Thin Clients are very energy efficient, using significantly less wattage on average compared to a 150-watt PC. If a company has hundreds or thousands of devices, the cost savings over time can contribute significantly to other business initiatives.

### A Growing Market Forecast

Many media organizations and global enterprises are paying close attention to the explosive growth potential of the cloud market. Research results from multiple sources show that establishing a cloud-based business environment can provide direct economic benefits.



'Global Industrial Thin-Client Platform Market Analysis, Technologies & Forecasts to 2021'

"One of the major drivers for this market is reduced total cost of ownership. Thin-client platforms are increasingly used across all the end-user industries in all regions. These platforms vary from traditional PCs in many ways. For instance, PCs have hardware components and memory to store the data and run the functions, whereas the thin-client platforms do not have associated hardware components and memory to store the data; the data is processed and stored at the back-end server. With the installation of thin-clients, the total operational cost is reduced due to advantages such as low upfront cost and additional benefits of minimal maintenance over the life, rapid installation, easy upgrades, and functioning that does not require any kind of specialized engineering."

Technavio, 2017, p.34



# Introducing LG Thin Clients

LG provides a full suite of uniquely designed Thin Client form factors to suit any business need.

The 38-inch 38CK950N Curved UltraWide® AIO (all-in-one) Thin Client features a WQHD+ resolution (3840 x 1600) curved 21:9 IPS display for accurate color reproduction and outstanding picture quality from virtually any viewing angle – perfect for viewing data sheets or detailed images and drawings. With 8GB DDR4 (up to 16GB), dual-monitor capability, a built-in webcam, speakers, AMD Ryzen™ 3 CPU, plus on-screen control software that can split the screen into two or four areas for greater control of multitasking and multi-application use, end users can achieve optimal productivity.

The 24-inch 24CK550W Widescreen AIO Thin Client features a Full HD (1920 x 1080) 16:9 IPS display, 4GB DDR4 (up to 8GB), dual-monitor capability, built-in

speaker, ergonomic stand (tilt, pivot, swivel, height adjust), and Windows 10 IoT Enterprise for cutting-edge manageability and security.

The 14-inch 14ZT980 Mobile Thin Client is an LG gram laptop with 14-inch IPS display, 8GB RAM DDR4 (Dual), 128GB SSD, 72-watt all-day battery, fingerprint ID and stereo speakers, all in an incredibly lightweight 2.19-pound MIL-STD 810G design that's perfect for businesses seeking the ultimate in power and portability.

The LG CK500W Thin Client Box includes 4GB DDR4 (up to 8GB), 32GB SSD, dual-monitor capability, multiple ports and connectivity options, and Windows 10 IoT Enterprise in a space-saving, fanless design.



*38" Curved UltraWide  
AIO Thin Client  
(38CK950N)*



*24" Widescreen  
AIO Thin Client  
(24CK550W)*



*Mobile Laptop Thin Client  
(14ZT980)*



*Thin Client Box  
(CK500W)*



## Ideal Environments for Thin Clients

Thin Clients excel in both persistent and non-persistent environments.

- **A PERSISTENT ENVIRONMENT** is a virtual desktop that can save data and user settings on the operating system.
- **A NON-PERSISTENT DESKTOP** is a virtual desktop that does not maintain user data, personalized settings, or any other changes made by the end user. Each time the end user logs on, they get a fresh, generic virtual desktop image.

## WHY LG?

LG Thin Clients offer superior quality and exceptional performance to ensure security-sensitive environments are solid. We provide a variety of form factors and design the products with innovations to improve the user experience, increase productivity and accommodate virtually any business need. For long-term reliability we use high-quality materials, and we make sure that all the software and applications that we partner with are top-notch and can clear our stringent quality control measures.

In addition, the IPS screen technology, dual-monitor capability, multiple ports, commercial warranty and included management console make LG Thin Clients a top choice for virtually any business.

### IPS (In-Plane Switching) Technology

There are good reasons the medical, broadcast and photographic industries specify displays with LG's IPS technology. IPS is an LCD screen technology that dramatically increases image quality. Additionally, since it allows more efficient transmission of the light source through the panel, backlights do not need to be as powerful and energy-consuming. IPS technology offers key benefits over conventional Twisted Nematic (TN) and Vertical Alignment (VA) desktop displays:

- A true wide viewing angle up to 178 degrees, where color and contrast remain consistent and data is clearly readable
- Superior color reproduction for critical image evaluation
- Runs considerably cooler than VA monitors
- Energy efficient for greater corporate responsibility and cost savings
- More stable and reliable—no image distortion when tapping on/rubbing the panel
- Color accuracy remains consistent over long-term use

### Multiple USB Ports

LG AIO Thin Clients are equipped with four to six USB ports that enable users to connect multiple peripherals such as a hard drive, burner, CAT card reader, and more. NOTE: With Thin Clients in a high-security environment, IT can turn off the USB ports from a central location.

### 3-Year Commercial Warranty

LG Thin Clients include a 3-year commercial warranty on parts and labor, with door-to-door support where LG will schedule a pickup, repair the device and ship it back to the customer. Healthcare and hospitality customers can also inquire about LG's optional Enhanced Service Plan.

### Management Console

LG 24-inch AIO Thin Client and LG Thin Client Box include the Fusion UDM Professional software, a powerful management console that enables IT to manage every Thin Client device on their network from a central location, regardless of how many devices are deployed.

## Conclusion

---

The future looks very good for LG Thin Clients, the channel partners that sell them, and the businesses that use them. As cloud computing becomes more prevalent and the market for Thin Clients continues to expand, it pays to partner with a manufacturer that builds quality, reliability and innovation into every product, offers complete solutions for numerous industries, and backs it all with world-class service and support.

**Let's work together.** Speak to your LG IT Products representative today and find out how easy it can be to sell LG Thin Clients.

**1-800-897-8726**



All images on screens are simulated. Design, specifications, and features subject to change without notice. © Copyright 2018 LG Electronics USA, Inc. All rights Reserved. LG Life's Good and UltraWide are registered trademarks of LG Corp. All other product and brand names are trademarks or registered trademarks of their respective companies.



# 2018 LG Thin Client Products

THIN CLIENT		38-inch All-In-One (38CK950N)	24-inch All-In-One (24CK550W)	Box (CK500W)	14-inch Laptop (14ZT980)
Display	Size	38" Class (37.5" diagonal)	24" Class (23.8" diagonal)	No Display (Box type)	14"
	Aspect Ratio	21:9	16:9		16:9
	Panel Type	IPS (Curved)	IPS		IPS
	Resolution	3840 x 1600	1920 x 1080		1920 x 1080
	Brightness (Typical / Min)	300cd/m <sup>2</sup> (Typ) 240cd/m <sup>2</sup> (Min)	250cd/m <sup>2</sup> (Typ) 200cd/m <sup>2</sup> (Min)		300cd/m <sup>2</sup> (Typ) 240cd/m <sup>2</sup> (Min)
	Contrast Ratio	1,000:1 (Typ)	1,000:1 (Typ)		800:1 (Typ)
	Response Time (GTG)	5ms (High)	5ms (High)		35ms (Tf + Tr, not GTG)
	Viewing Angle (CR > 10)	178°/178°	178°/178°		178°/178°
System	Processor	AMD Ryzen 3 (2core 4thread)	AMD Prairie Falcon GX-212JJ	AMD Prairie Falcon GX-212JJ	Intel Core i3-7100U for 14Z980-G Intel Celeron 3965U for 14Z980-L
	OS	Windows 10 IoT Enterprise	Windows 10 IoT Enterprise	Windows 10 IoT Enterprise	Windows 10 IoT Enterprise
	Memory	8GB DDR4 (up to 16GB)	4GB DDR4 (up to 8GB)	4GB DDR4 (up to 8GB)	8GB
	Graphics	Integrated	Integrated	Integrated	Integrated
	Storage (SSD)	128GB	32GB	32GB	128GB
Signal	Display Port	1 x DP (Output, ver. 1.2), 1 x DP (Input, ver. 1.2)	1 x DP (Output, ver. 1.2)	1 x DP (Output, ver. 1.2)	-
	HDMI	1 x HDMI (Input, ver. 2.0)	1 x HDMI (Input, ver. 1.4)	1 x HDMI (Output, ver. 1.4)	1 x HDMI (Output)
	DVI-I	-	-	1 x DVI-I (Output)	-
	USB	2 x USB3.1 gen2 Type-A 2 x USB3.1 gen2 Type-C	4 x USB2.0 / 2 x USB3.0	4 x USB2.0 / 2 x USB3.0	1 x USB3.0 Type-C / 2 x USB3.0
	Mic-in	Mic-in & Headphone Out Combo	Yes	Yes	Yes (with Headphone Combo jack)
	Headphone Out		Yes	Yes	
Networking	Wireless	802.11a/b/g/n/ac_Antenna (Internal)	Intel Dual Band Wireless-AC 3168 1x1 AC (AGN support, BT 4.0 + LE Combo)	Intel Dual Band Wireless-AC 3168 1x1 AC (AGN support, BT 4.0 + LE Combo)	Intel Dual Band Wireless-AC 8265 2x2 AC (AGN support, BT Combo)
	BT	BT4.2 + LE	over BT4.0	over BT4.0	BT 4.1
	Ethernet	Yes (Gigabit)	Yes (Gigabit)	Yes (Gigabit)	Yes (Gigabit, via Gender)
Speaker	Built-in Stereo	Yes (10W x 2)	Yes (3W x 2)	-	Yes (1.5W x 2)
Battery	Battery	(No Battery)			4Cell (Li-Polymer/72 Wh)
Dimension & Weight	WxDxH (with Stand)	(No Stand)	21.0 x 9.4 x 20.2 (in) / 533.8 x 240 x 512.9 (mm)	(No Stand)	(No Stand)
	WxDxH (without Stand)	35.3 x 3.9 x 16.7 (in) / 897.3 x 100.3 x 424 (mm)	21.0" x 2.7 x 13.1 (in) / 533.8 x 67.6 x 333.1 (mm)	7.1 x 1.6 x 4.6 (in) / 180 x 39.9 x 117 (mm)	12.7 x 8.3 x 0.6 (in) / 323.4 x 211.8 x 14.5-16.5 (mm)
	Weight (with Stand)	(No Stand)	13.4lbs / 6.1kg	(No Stand)	(No Stand)
	Weight (without Stand)	19.5lbs / 8.86kg	8.7lbs / 3.95kg	2.2lbs / 1kg	2.1lbs / 0.95kg
	VESA	100 x 100 (mm)	100 x 100 (mm)	100 x 100 (mm), 75 x 75 (mm)	-
Stand	Stand	(No Stand)	Ergonomic Stand (T,S,P,H adjustable)	(No Stand)	(No Stand)
Webcam	Webcam	Yes	-	-	Yes
Security	TPM (Trust Platform Module)	Hardware TPM 2.0	Software TPM	Software TPM	Software TPM