



OWNER'S MANUAL

SuperSign C v3

Please read this manual carefully before operating the product and retain it for future reference.

TABLE OF CONTENTS

3	What is SuperSign C v3 Software?	
3	Signage Monitor	
3	System Requirements	
4	Features	
5	Setting up SuperSign C v3	
5	LAN Connection	
7	RS-232C Serial Communication	
9	Installing SuperSign C v3	
9	Installing SuperSign C v3	
10	Deleting SuperSign C v3	
11	Installing .NET Framework 4.0	
12	Overview of SuperSign C v3	
12	Start Screen	
17	Using SuperSign C v3	
17	Login	
18	Group Management	
20	Signage Monitor Management	
23	Program Setup	
23	Help	
24	Device Management	
25	Video Wall Management	
27	Checking and Changing Monitor Settings	
29	Using [Device Setting] Tab	
37	Using [White Balance] Tab (Multi-Vision Only)	
45	Using [Instant Message] Tab	
46	Using [Command Console] Tab	
47	Using [Log] Tab	
48	Using [Status] Tab	

What is SuperSign C v3 Software?

SuperSign C v3 is a remote management software solution for digital Signage monitors (or some TV models, e.g. SuperSign TV) developed based on LG Electronics' proprietary technology. SuperSign C v3 helps you easily control the settings (e.g. screen settings, power on/off) of the monitors connected to a network or serial ports.

Signage Monitor

LG Electronics' Signage monitor is equipped with a Ethernet network interface card, which allows you to control the monitor connected to a LAN or RS-232C serial ports.

For a complete listing of Signage monitor models supported by the SuperSign C v3 software, see the [Help > Information] menu on the software.



NOTE

- More monitor models may be supported by SuperSign C v3 software in the future. Please make sure to add correct monitor model. If you add an incorrect monitor model, it may cause the software to malfunction.



CAUTION

- If you run the program after you have selected [M-125%] or [L-150%] in [Control Panel] - [Appearance and Personalization] - [Display] in Windows 7, part of the image may not be displayed properly.

System Requirements

Hardware

RAM: 4 GB or higher

Disk: 400 MB or higher

Software

.NET Framework 4.0

System

Windows Platform

For Windows 7, Professional or higher

For Windows 8, Professional or higher

* Certain GUI screens may not display properly on some 64-bit versions of Windows.

Features

Integrated Management through LAN and Serial Communication

- Provides easy management of monitors connected to LAN or serial communication.

Wide Area Network (WAN) Control

- Allows you to manage the monitors even at remote sites through WAN such as the Internet.

Automatic Search for Monitors on the Same Network

- Automatically searches, adds, and manages the monitors connected to the same network as the computer where SuperSign C v3 is installed.

Power on/off Scheduling and Input Signal Settings

- Sets the monitor to turn on/off automatically. Sets an input signal to be applied automatically when the monitor is turned on.

Easy Tile Mode

- Allows you to set the Tile Mode with the easy-to-use and intuitive GUI design.

Firmware Upgrade over LAN (S7 Platform or higher)

- Updates the monitor firmware easily via network.

Instant Messaging (S7 Platform or higher)

- Allows users to display desired messages on the screen.

Setting up SuperSign C v3

Setting up SuperSign C v3 involves establishing connections between the LG Electronics' Signage monitors and their management program, SuperSign C v3 software. SuperSign C v3 connection setup supports the following two methods:

- Local Area Network (LAN) connection
- RS-232C serial communications

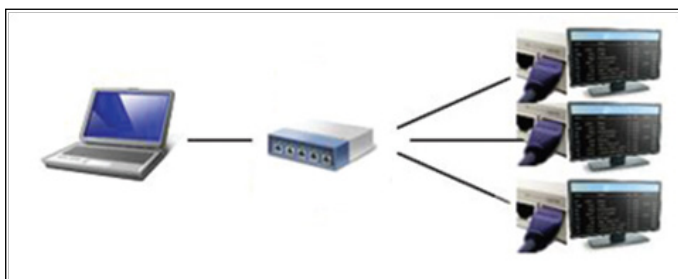


CAUTION

- If one monitor is managed simultaneously by a multiple number of computers or managed by two different versions of the software running simultaneously, it may not function correctly.

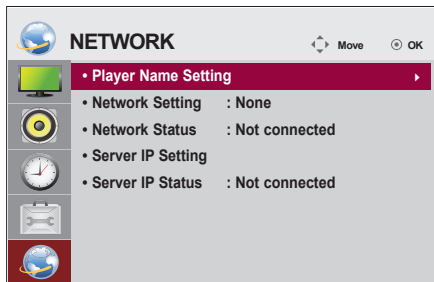
LAN Connection

This method connects monitors to a network using a switch or a hub. Connect the network cable from the LAN to the Ethernet port on the Signage monitor.



Setting IP Address for Network Monitor

Once the network cable is connected, set an IP address for the Signage monitor to complete the network connection. Follow the steps below to set an IP address for the monitor:



- 1 Open the [Menu] window on the monitor.
- 2 Select [Network] on the menu.
- 3 Select [Network Setting] in [Network].
- 4 Select IP setting mode in [IP Mode].

Case 1) IP Auto Setting

- a. Click [Setup] to assign an IP address automatically.
- b. When IP setting is complete, click [EXIT] to exit the IP setting.

Case 2) IP Manual Setting

- a. Assign an IP address, subnet mask, gateway, and DNS server address.
- b. Click [Setup] to apply the IP setting.
- c. When IP setting is complete, click [EXIT] to exit the IP setting.

- 5 In the [Option] window, select [Product/Service Info] and then check whether the IP address is correctly assigned.

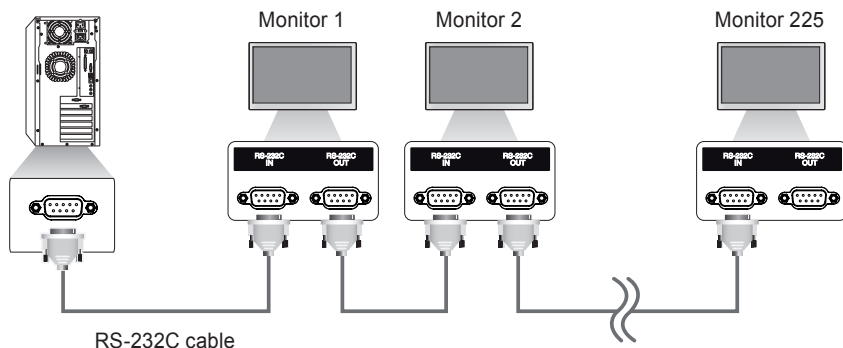


NOTE

- A Local Area Network (LAN) is a network of computers in a short-range area such as home, office or school.
- The menu screens in this manual are for informational use only and may differ depending on the model.

RS-232C Serial Communication

For RS-232C serial port communication, use an RS-232C cable to connect a monitor directly to the PC where the SuperSign C v3 software is installed. To connect more than one monitor to the computer, connect the first monitor to the computer with an RS-232C cable and then connect the rest using RS-232C cable as shown below:



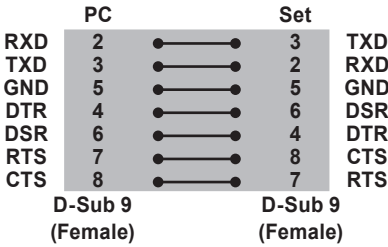
CAUTION

- You can connect up to 1000 monitors by using RS-232C cables. However, considering the bandwidth of the RS-232C cable it is recommended that you connect no more than 225 monitors.
- The RS-232C cable may not be provided, depending upon the model.

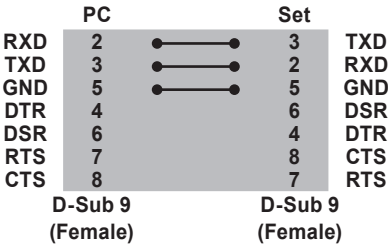
RS-232C Configurations

ENGLISH

7-Wire Configurations (Standard RS-232C cable)



3-Wire Configurations (Non-Standard)



NOTE

- See the pictures above for the configuration of RS-232C cables that can be connected to the LG Signage products.
- When using 3-wire connections (non-standard), an IR daisy chain cannot be used.

Communication Parameter

- Baud rate: 9600 bps (UART)
- Data Length: 8 bit
- Parity Bit: None
- Stop Bit: 1 bit
- Flow Control: None
- Communication Code: ASCII code
- Use a crossed (reverse) cable

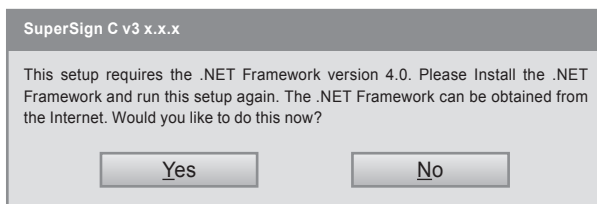
Installing SuperSign C v3

Install the SuperSign C v3 software on the PC to which you want connect Signage monitors through a network or serial cables. You can control Signage monitors using SuperSign C v3 installed on the PC.

Installing SuperSign C v3

Describes the steps needed to install SuperSign C v3 on the PC.

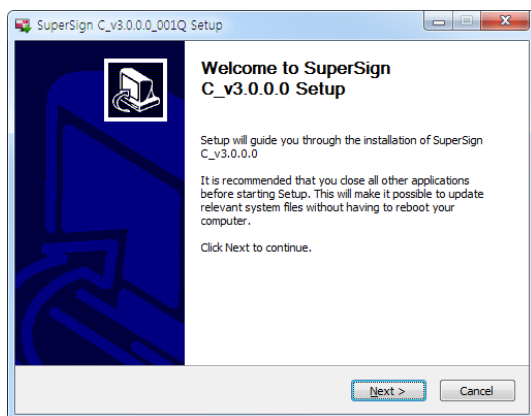
- 1 Insert the SuperSign C v3 CD provided into the CD-ROM drive.
- 2 Run Setup.msi in the SuperSign C v3 folder from the CD provided.



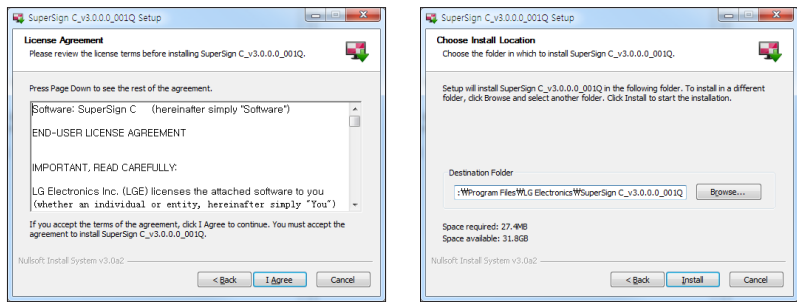
CAUTION

- When the pop-up below appears while running Setup.msi, install .NET Framework 4.0 first by referring to the [Installing .NET Framework 4.0] section. Then, continue to install the SuperSign C v3 software.

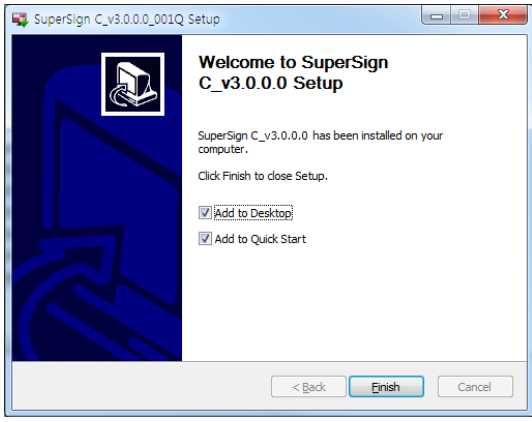
- 3 When the Setup Wizard window appears, click [Next].



- Accept the terms and conditions, and then click [I Agree]. Click the [Browse] button to change the default installation folder.
- Click the [Install] button to start the program installation.



- When the installation is complete, click the [Finish] button.

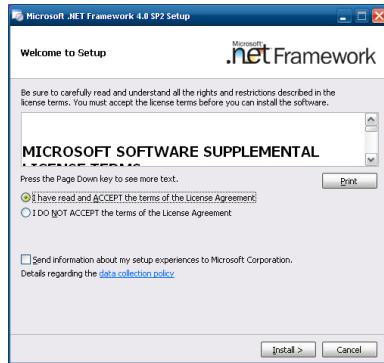


Deleting SuperSign C v3

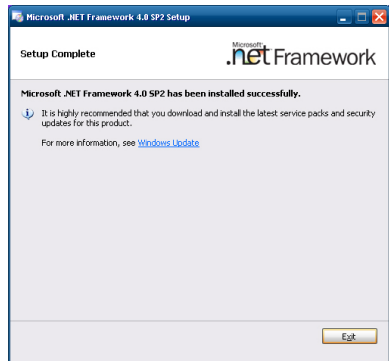
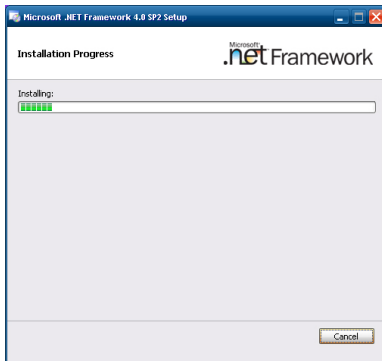
Describes the steps needed to remove SuperSign C v3 from the PC.
 Select **Start > Settings > Control Panel > Add/Remove Programs > SuperSign C v3.x.x** to remove the software.

Installing .NET Framework 4.0

- 1 Download .NET Framework 4.0 from the following website and then run it.
<http://www.microsoft.com/en-us/download/confirmation.aspx?id=17718>
- 2 Accept the terms and click the [Install] button.



- 3 When the installation is complete, click the [Exit] button.

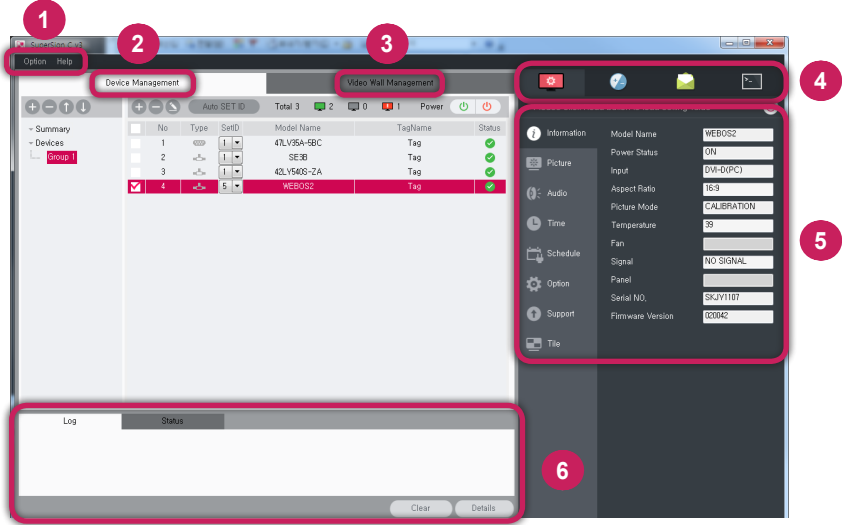


Overview of SuperSign C v3

Overviews the key functions of the SuperSign C v3 software.

Start Screen

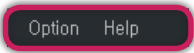
ENGLISH



No.	Item	Description
1	Menu	Provides [Option] and [Help] used in SuperSign C v3.
2	Device Management	Shows the statuses of [Device List] and [Group].
3	Video Wall Management	Allows you to check and manage [Tile] types and [Tile ID] necessary to configure the video wall.
4	Control tabs	Provides [Device Setting], [White Balance], [Instant Message], and [Command Console] for the selected monitor.
5	Control panel	Shows and adjusts settings for the selected control tab.
6	Log/Status tab	Shows the output of the executed command or the status of the monitor.

Menu

Provides [Option] and [Help] used in SuperSign C v3.



LIST	Description
Option	<p>You can change user settings such as [Language], [Change login password], and [Email notification].</p> <ul style="list-style-type: none">• [Email Notification]: Monitors items with Error Reporting Mail Service. Email accounts and the notification period can be set.- This menu consists of [Email Notification Settings] and [History].- [Email Notification Settings]: Sets the basic information for sending emails.- [History]: Shows the history of emails sent.
Help	<ul style="list-style-type: none">• [Information]: Shows the SuperSign C v3 version and supported Signage monitor models.• [Software Update]: Downloads the latest version of software when there is an available software update.

Email Notification

This feature sends an email when an error occurs regarding a monitored item. You can set email accounts and the notification period for this feature.

Email Notification

Email Account Settings

Email Address

Sending Server (SMTP)

Port

ID

Password

Trouble Notification Settings

Enable

Notification Period

Test

Register

Close

LIST	Description
Email Account Settings	You can change settings for Email Address, Outgoing Server (SMTP), and Email Notification.
Trouble Notification Settings	In Trouble Notification Settings, you can enable or disable the error notification feature and set the notification period. After setup, you can register and test email accounts.

History

This feature shows the history of emails sent.

ENGLISH

Sent Mail History

ALL

2015-03-12 17:12:19

No	Mail ID	Group Name	Model Name	IP Address	CONTENTS	Monitoring Time	Sent Time
1	206	Group1	42LV540S-UA	10.196.7.42	Connection : NG MonitoringTime : 2015-02-03 02:13:56	2015-02-03 02:19:56	2015-02-03 02:19:56
2	207	Group1	42LV540S-UA	10.196.7.42	Connection : NG MonitoringTime : 2015-02-03 01:55:33	2015-02-03 01:55:33	2015-02-03 01:55:33
3	208	Group1	42LV540S-UA	10.196.7.42	Connection : NG MonitoringTime : 2015-02-03 01:54:16	2015-02-03 01:54:16	2015-02-03 01:54:16
4	209	Group1	55XF2B	10.196.7.49	Connection : NG MonitoringTime : 2015-02-03 01:48:14	2015-02-03 01:48:14	2015-02-03 01:48:14
5	210	Group1	55XF2B	10.196.7.35	Connection : NG MonitoringTime : 2015-02-03 10:44:23	2015-02-03 10:44:23	2015-02-03 10:44:23
6	211	Group1	55XF2B	10.196.7.35	Connection : NG MonitoringTime : 2015-02-03 10:30:03	2015-02-03 10:30:03	2015-02-03 10:30:03
7	212	Group1	55XF2B	10.196.7.35	Connection : NG MonitoringTime : 2015-02-03 10:24:14	2015-02-03 10:24:14	2015-02-03 10:24:14
8	213	Group1	55XF2B	10.196.7.35	Connection : NG MonitoringTime : 2015-02-03 10:20:41	2015-02-03 10:20:41	2015-02-03 10:20:41
9	214	Group1	55XF2B	10.196.7.35	Connection : NG MonitoringTime : 2015-02-03 10:14:12	2015-02-03 10:14:12	2015-02-03 10:14:12

Log deletionClose

Device Management

Shows the list of monitors and the status of the group of monitors.

Device Management

Video Wall Management

+ - ↑ ↓

Summary

Devices

Group 1

Group 2

Auto SET ID

Total 3

2

0

1

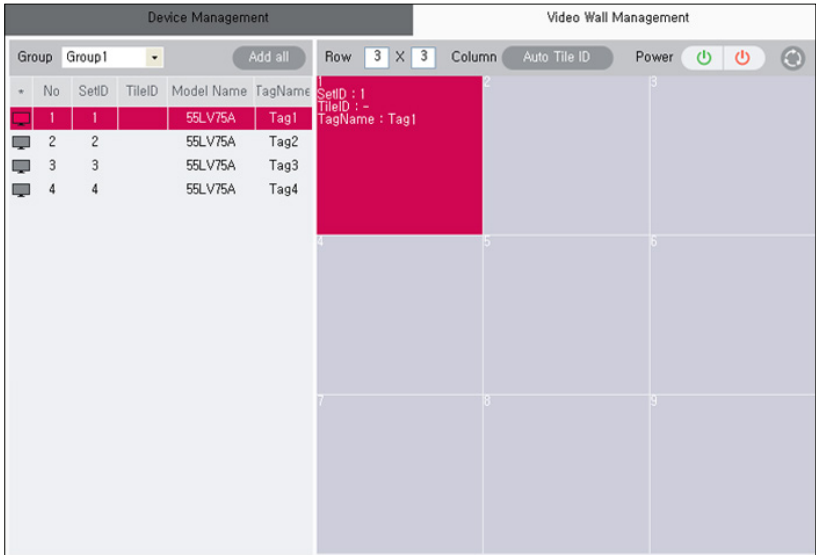
Power

⏻ ⏼

No	Type	SetID	Model Name	TagName	Status
1	📺	1	47LV35A-5BC	Tag	✓
2	📺	1	SE3B	Tag	✓
3	📺	1	42LV540S-ZA	Tag	✓
4	📺	5	W5B002	Tag	✓

Video Wall Management

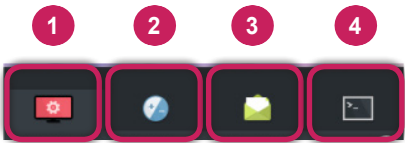
Allows you to check and manage Tile types and Tile ID necessary to configure the video wall.



ENGLISH

Control tabs

Provides the following features for the selected monitor.

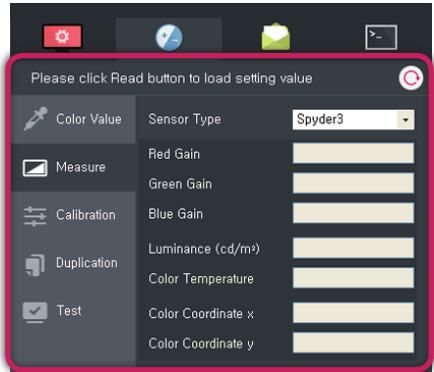


No.	Item	Description
1	Device Setting	You can check or configure the following functions: [Information], [Picture], [Audio], [Time], [Schedule], [Option], [Support], and [Tile].
2	White Balance	Provides various functions, including [Measure], [Calibration], [Duplication], [Test] for [Color Value] and the white balance using a sensor.
3	Instant Message	Allows you to write and instant message to any monitor.
4	Command Console	You can view a response to the command.

Control panel

Shows and adjusts settings for the selected control tab. See next page for a more detailed description of the features.

ENGLISH



Log/Status tab

Shows the output of the executed command or the status of the monitor. See next page for a more detailed description of the features.

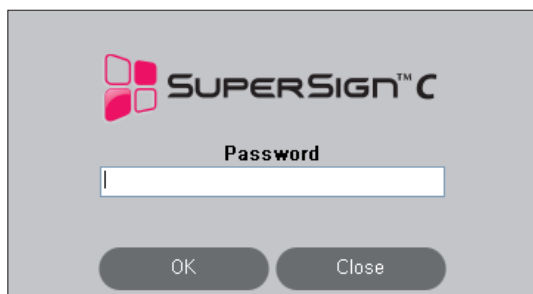


Using SuperSign C v3

Login

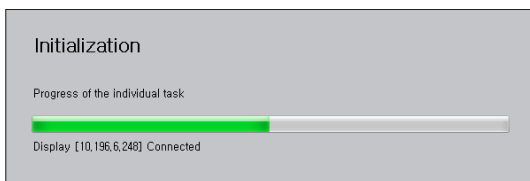
When you run SuperSign C v3, the login window appears as shown below. Users cannot use White Balance, Upgrade, and Instant Message.

The default administrator password is 0000. For security reasons, it is recommended that you change your password.



Check Network Connection


Shows the network status of a registered monitor connected to the network.

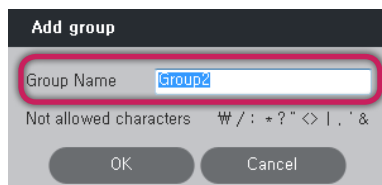
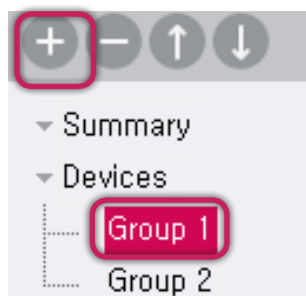


Group Management

Creating New Group



Before registering the monitors, you must create a new group.

- 1 Click the  button in the top left corner of the program window.
- 2 Enter your desired [Group Name].



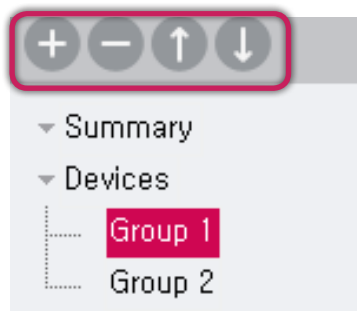
- 3 After creating a new group, register your monitor. The currently selected [Group Name] is the [Group Name] activated in the group tree on the left side of the program window.

Adding/Removing Group

Click the  button or  button to add or remove a group. Select a desired group and click the button you want.

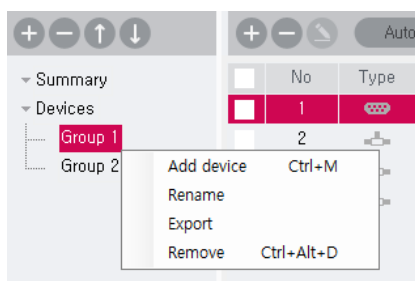
Changing Group Order

Click the  or  button to change the order of groups.



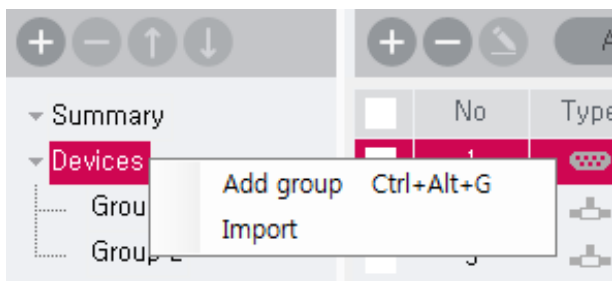
Managing Group Details

A pop-up menu appears in which you can select [Add Devices], [Rename], [Export], [Remove], etc.



Adding/Importing Group

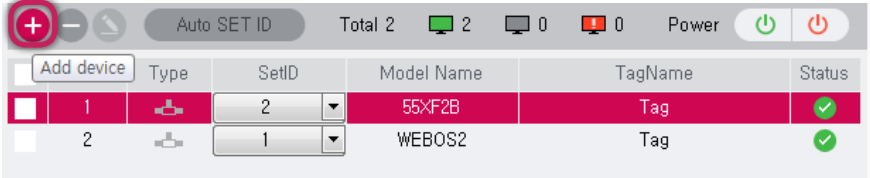
Right click the Devices group, which is the top-level group, then a pop-up menu appears in which you can select [Add group], [Import], etc. You can import the stored groups by clicking [Import].



Signage Monitor Management

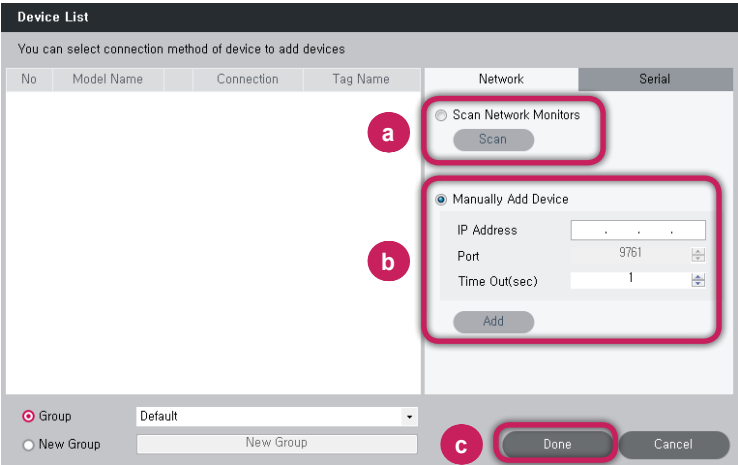
ENGLISH

1 Click the **+** button in the [Device Management] window.



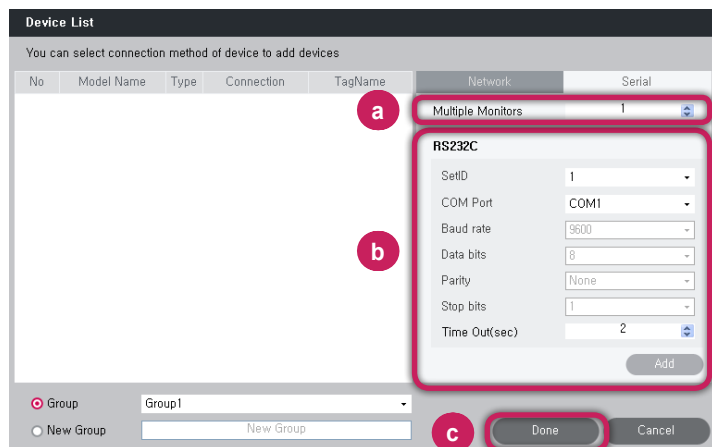
2 Adding Signage Monitor Connected Through [Network]

- a. You can add a monitor by scanning your network.
- b. You can add a monitor by manually entering an address.
- c. When the monitor you want to add appears in the list to the left, verify the information and then click the [Done] button.



3 Adding Signage Monitor Connected Through [Serial]

- If you set [Multiple Monitors], you can add a number of connected Signage monitors whose information is identical to each other all together.
- Click the [Add] button after entering the information, and then all monitors with matching information will be added.
- When the monitor you want to add appears in the list to the left, verify the information and then click the [Done] button.



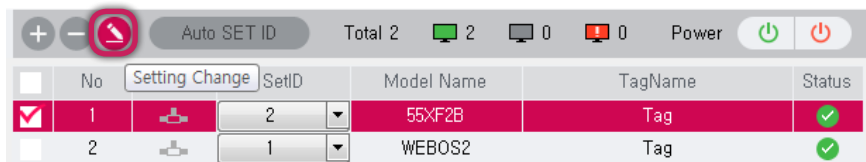
4 Deleting Signage Monitor


- If you want to delete all monitors, check the check box at the top and then delete them.



5 You can change the settings of the registered monitor.


- After selecting the monitors you want to change the setting, You press [Setting Change] button.












- 6 You can select Summary in the group management area to view the number of registered monitors through the network connection (RJ45) and the monitor's connection statuses in each group. There are three different connection statuses: Normal, Disconnected, and Connected but faulty. You can check the number of monitors in each connection status.
- a. The items monitored for errors are [Connection], [Input], [Fan], [RGB Sensor], [BLU], and [Temperature].
 - b. In [Summary], you can select a group to view a summary of all the problematic monitors in the group. Also, you can select a monitor to view its error history .
 - c. In [Summary], you cannot read or set any information for a monitor.
 - d. In [Summary], you can turn on or off all the selected monitor(s).



No.	Item
1	Normal
2	Disconnected
3	Connected but faulty

- 7 Click the  button to open the status history of the monitors.

Total 2  1  1  0 Power  

<input type="checkbox"/>	Group	Details	Status	Log
<input checked="" type="checkbox"/>	▼ Group 1	Registered : 2 Devices	 1  1  0	
<input type="checkbox"/>	55XF2B	10,196,6,248	Connection Warning	

Monitor status log												
55XF2B(Group 1)												
- IP : 10,196,6,248 @2015-03-12 17:36:50												
No	Model Name	IP Address	Network	Fan	Temp1	Temp2	Temp3	BLU	Input	RGB Sensor	Time	
3	55XF2B	10,196,6,248	OK	OK	28°C/(80)	27°C/(75)	43°C/(90)	OK	OK	N/A	2015-03-12 17:29:54	
2	55XF2B	10,196,6,248	OK	OK	28°C/(80)	27°C/(75)	43°C/(90)	OK	OK	N/A	2015-03-12 17:29:54	
6	55XF2B	10,196,6,248	OK	OK	28°C/(80)	27°C/(75)	43°C/(90)	OK	OK	N/A	2015-03-12 16:48:14	
4	55XF2B	10,196,6,248	OK	OK	28°C/(80)	27°C/(75)	43°C/(90)	OK	OK	N/A	2015-03-12 17:08:53	
5	55XF2B	10,196,6,248	OK	OK	28°C/(80)	27°C/(75)	43°C/(90)	OK	OK	N/A	2015-03-12 17:08:51	
1	55XF2B	10,196,6,248	NG	N/A	N/A	N/A	N/A	N/A	N/A	N/A	2015-03-12 17:36:59	

Export to File Log deletion Close

Program Setup

Language

To change the language for the program, select [Menu] > [Option] > [Language].

Changing Login Password

To change the administrator password, select [Menu] > [Option] > [Login Password].

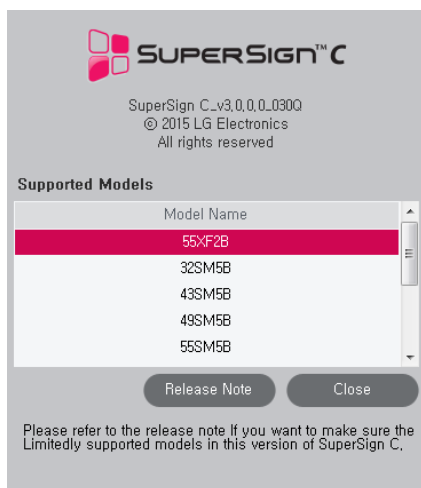
Help

Information

Shows the version of SuperSign C v3 and supported models.

Software Update

Shows the information whether there is a new version update available.



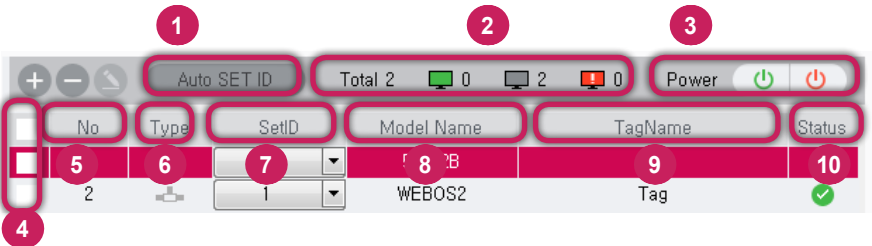
NOTE





- The monitor models supported by SuperSign C v3 are subject to change.
- For non-monitor models (e.g., TV models), only some features are supported. For more information, refer to the owner's manual for each product.
- For more information or a complete list of models, see the release note.

Device Management

Displays monitors that belong to a group in list form.

ENGLISH



No.	Item	Description
1	Auto SET ID	Automatically assigns a SET ID to monitors connected in a RS-232C daisy chain in the order of their connection. Select a monitor to start with and click the Auto SET ID button. You can assign a SET ID to up to 225 connected monitors.
2	Connection Status Summary	Shows the total number of SSC-registered monitors by status.
3	Power On/Off	Turn on or off selected monitors in the selected [Group]. This feature may not work properly if you click buttons alternately at too short intervals.
4	Check box	Select the monitor. You can select multiple monitors.
5	No.	Applies all monitors in the list to the Tile View pane to the right in order of their connection, without the need to drag and drop.
6	Connection Type	 (Serial) or  (Network) is shown according to connection type.
7	SET ID	Shows the SET ID assigned to a monitor.
8	Model Name	Shows the model name of a monitor to be connected.
9	Tag Name	Description of the monitor
10	Monitor Status	Shows the progress of a command such as importing monitor information or setting a value etc. Normal:  Disconnected: 



NOTE

- Hover the cursor over the Connection Type icon to display a tooltip with the connection information for the monitor.
- The S7-platform based monitor uses the WOL (Wake On LAN) technology to support the power on function. Therefore, it is supported only in the LAN environment. In addition, the WOL function must be enabled on the Signage monitor to use the power control.
- If you use multiple monitors with the same SetID, the monitor may not working normally. Please specify a unique ID for each monitors.

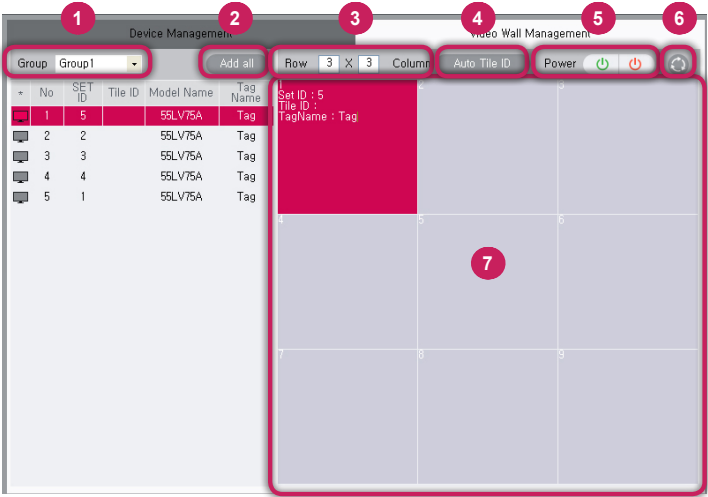
Video Wall Management

Displays monitors that belong to a group in tile form. You can configure the video wall by using the drag-and-drop* feature. Click a desired monitor in the monitor list to the left and drag it to a tile in the Tile View pane to the right. Basic information about the monitor will be shown in the tile. To select a monitor, click on the tile where the monitor has been applied. The color of the corresponding monitor icon will change upon clicking. You can change the setting values of a monitor only when it is selected. To delete the monitor applied to the tile, right-click on the tile and click the [Delete] button.

From the Tile View on the right, you can choose multiple monitors either by left-clicking and dragging them, or by holding down the [Ctrl] key and left-clicking on multiple monitors. However, from the Tile View, you can only choose the tiles to which the monitor is applied.


NOTE

- When choosing multiple monitors, some functions of SuperSign C v3 may not work properly.







No.	Item	Description
1	Group	Selects a desired [Group] in the list. When you select a [Group], a list of monitors that belong to the selected Group appears in the panel below.
2	Add all	Applies all monitors in the list to the Tile View pane to the right in order of their connection, without the need to drag and drop*.
3	Row x Column	Sets the row and column sizes to your preference.
4	Auto Tile ID	Automatically assigns Tile IDs to the monitors that are registered in the Tile View and then saves Tile IDs.


No.	Item	Description
5	Power On/Off	Turns on or off all monitors in the selected [Group]. This feature may not work properly if you click buttons alternately at too short intervals.
6	Reset	Reset the configuration of the video wall.
7	Tile View	Displays the configuration of the video wall and select the one monitor. To choose multiple monitors in the [Device Management] tab.

 **NOTE**

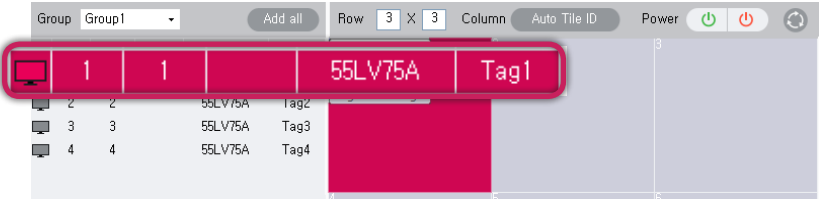
- Drag and Drop*
Drag and Drop is a method where you select an item in a program with the mouse, drag the item by moving the mouse pointer to the desired location, whether it is a different location in the program or in another program, and then drop it there by releasing the button.

Status indicated by Tile View color

			
Mouse click	Drag and Drop	Add all	Auto Tile ID

 **NOTE**

- The selected monitor can be easily distinguished from the other monitors by its lit icon.



Checking and Changing Monitor Settings

1 Checking Settings

a. [Device Management]

Select a desired monitor in [Device Management].

Auto SET ID

Total 2

0

2

0

Power

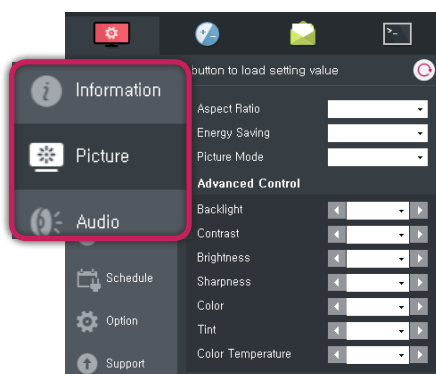
No	Type	SetID	Model Name	TagName	Status
<input checked="" type="checkbox"/>	1	<div><div></div>2</div>	55XF2B	Tag	<div><div></div></div>
<input type="checkbox"/>	2	<div><div></div>1</div>	WEBOS2	Tag	<div><div></div></div>

[Video Wall Management]

Select a desired monitor in [Video Wall Management]

Group	Group 1	Add all	Row	3	X	3	Column	Auto Tile ID	Power			
No	SetID	TileID	Model Name	TagName	SetID : 2	TileID :	TagName : Tag					
<input checked="" type="checkbox"/>	1	2	55XF2B	Tag								
<input type="checkbox"/>	2	1	WEBOS2	Tag								

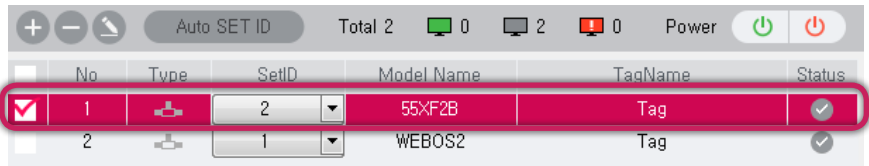
b. Select the Control tab function you want to check, then click the (Read) button.



2 Changing Monitor Settings

a. [Device Management]

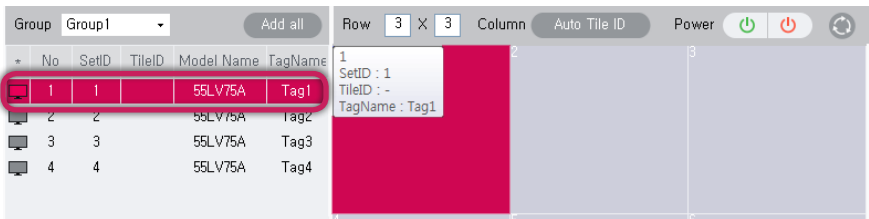
Check the check box for your desired monitor in [Device Management].



	No	Type	SetID	Model Name	TagName	Status
<input checked="" type="checkbox"/>	1		2	55XF2B	Tag	<input checked="" type="checkbox"/>
<input type="checkbox"/>	2		1	WEBOS2	Tag	<input checked="" type="checkbox"/>

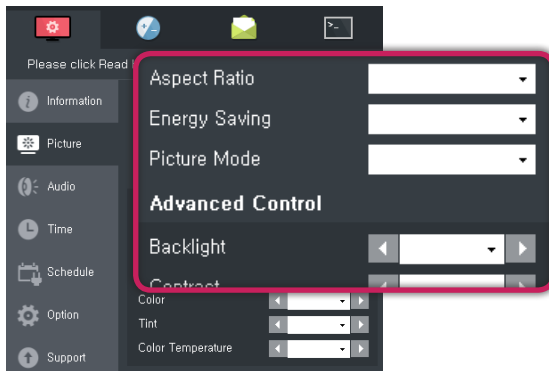
[Video Wall Management]

Select a desired monitor in [Video Wall Management].



Group	No	SetID	TileID	Model Name	TagName
Group1	1	1	1	55LV75A	Tag1
	2	2	2	55LV75A	Tag2
	3	3	3	55LV75A	Tag3
	4	4	4	55LV75A	Tag4

b. Adjust the setting for each piece of information in Control Panel.



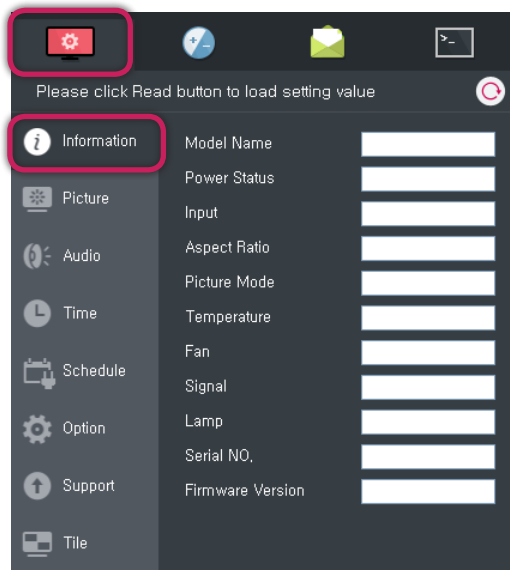
NOTE

- Connected to network (RJ45): , Disconnected from network (RJ45):
- This is not supported in the serial connection mode.

Using [Device Setting] Tab

Viewing [Information] Tab

Click the [Information] tab and select a monitor in [Device Management] to view the monitor's current information.




Item	Description
Model Name	Model name of the selected monitor
Power Status	Power status view and power control (on/off) of the monitor
Input	Input setting status
Aspect Ratio	Aspect ratio setting status
Picture Mode	Picture mode setting status
Temperature	Internal temperature of the monitor
Fan	Operation status of the cooling fan
Signal	Signal status
Panel	Display panel status
Serial No.	Serial number of the monitor
Firmware Version	Firmware version of the monitor

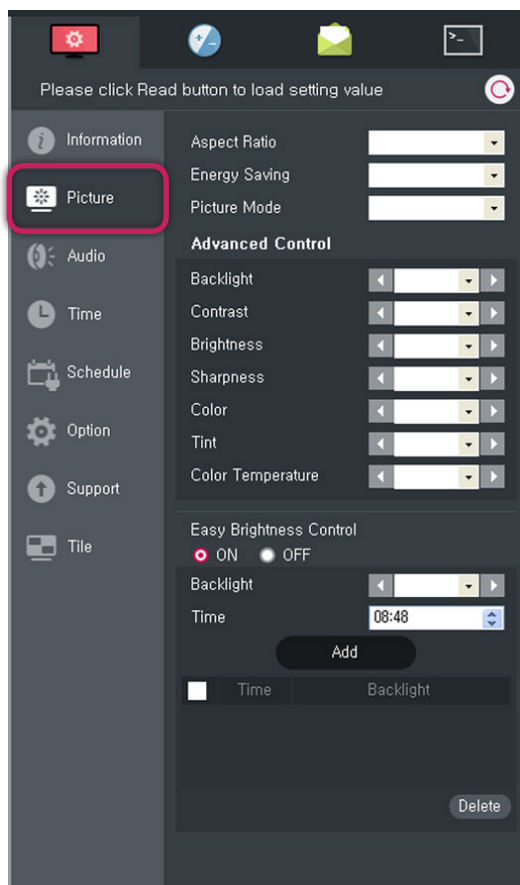


NOTE

- The items not supported by the model are displayed as inactive.

Viewing [Picture] Tab and Changing Settings


Click the [Picture] tab, select a monitor in [Device Management], and then click the  (Read) button to view the monitor's current information. You can view and change the settings of [Aspect Ratio], [Energy Saving], [Picture Mode], [Backlight], [Contrast], [Brightness], [Sharpness], [Color], [Tint], [Color Temperature], and [Easy Brightness Control]. Available items may differ depending on the model.

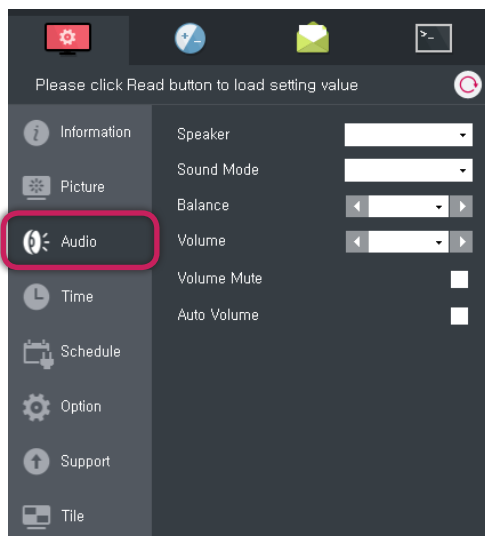


NOTE


- The following values may be displayed for the Tint option depending on the monitor model.
For Tint, R50 - 0 - G50 is displayed.
For color temperature, W50 - 0 - C50 is displayed.

Viewing [Audio] Tab and Changing Settings

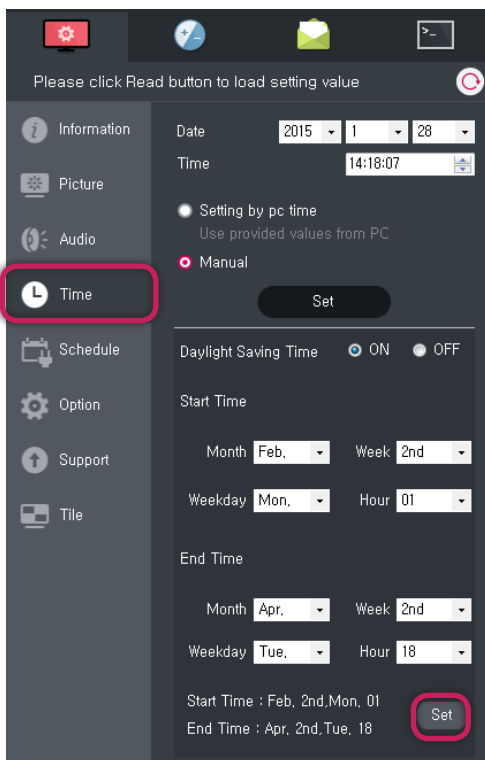
Click the [Audio] tab, select a monitor in [Device Management], and then click the  (Read) button to view the monitor's current information. You can view and change the settings of [Speaker], [Sound Mode], [Balance], [Volume], [Volume Mute], and [Auto Volume]. Available items may differ depending on the model.



Viewing [Time] Tab and Changing Settings

Click the [Time] tab, select a monitor in [Device Management], and then click the  (Read) button to view the monitor's current information. Select [Auto] or [Manual] according to what the model supports, set the date and time, and then click the [Set] button.

In [Daylight Saving Time], you can turn on or off the daylight saving time feature and manage its start and end times.




The screenshot shows a settings menu with a sidebar on the left containing icons for Information, Picture, Audio, Time (highlighted with a red box), Schedule, Option, Support, and Tile. The main area displays the 'Time' settings. At the top, it says 'Please click Read button to load setting value' next to a circular arrow icon. Below this, there are dropdowns for 'Date' (2015, 1, 28) and 'Time' (14:18:07). There are two radio buttons: 'Setting by pc time' (selected) and 'Manual'. Below the radio buttons is a 'Set' button. Further down, there is a 'Daylight Saving Time' section with 'ON' and 'OFF' radio buttons. Below that are 'Start Time' and 'End Time' sections, each with dropdowns for Month, Week, Weekday, and Hour. At the bottom, there are labels for 'Start Time : Feb, 2nd, Mon, 01' and 'End Time : Apr, 2nd, Tue, 18', with a 'Set' button (highlighted with a red box) to the right.



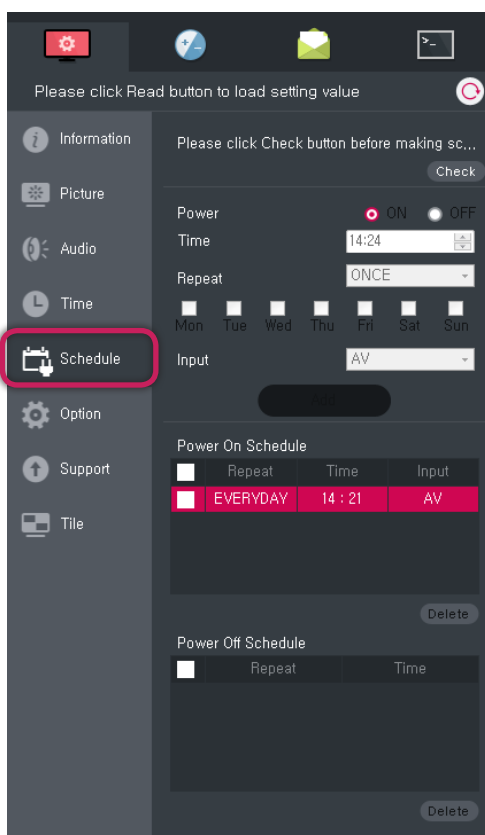
NOTE

- After you turn this feature on or off and set the start and end times, be sure to click the [Set] button to apply the changes to your monitor.

Viewing [Schedule] Tab and Changing Settings

Click the [Schedule] tab, select a monitor in [Device Management], and then click the  (Read) button to view the monitor's current information. Click the drop-down button on the right-hand side of each piece of information to change the settings. You can view the schedule for turning [ON] or [OFF] the [Power] if a monitor model supports this feature.


Set [Input], your desired [Time], and whether or not to [Repeat], then click the [Add] button. To add a schedule manually, go to [Repeat] and select [Manual]. Under [Manual], select Day, set [Input], and then click the [Add] button. If you want to delete schedule, check the check box and then click the [Delete] button.



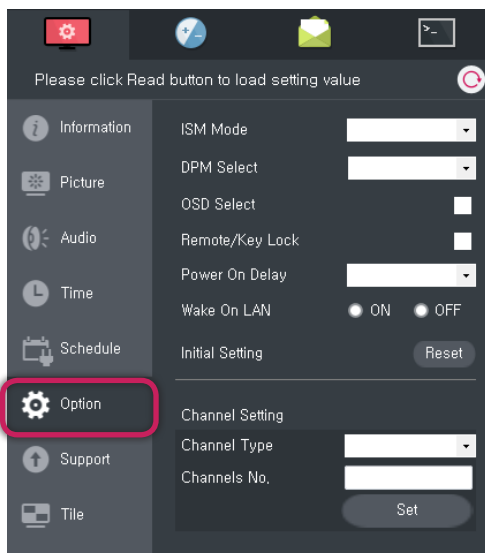
NOTE

- Some models cannot display the schedule, which was set manually on the monitor, on the SuperSign C v3 screen. Therefore, the schedule which was set by using this function should be checked on the monitor.

Viewing [Option] Tab and Changing Settings

Click the [Option] tab, select a monitor in [Device Management], and then click the  (Read) button to view the monitor's current information. Click the drop-down button on the right-hand side of each piece of information to change the settings. You can view and change the settings of [ISM Mode], [DPM Select], [OSD Select], [Remote/Key Lock], and [Power On Delay]. Available items may differ depending on the model. If your monitor supports the [Wake On LAN] feature, you can enable or disable the Wake-on-LAN (WoL) feature by selecting the On or Off checkbox. To reset the monitor, click the [Reset] button in [Initial Setting].

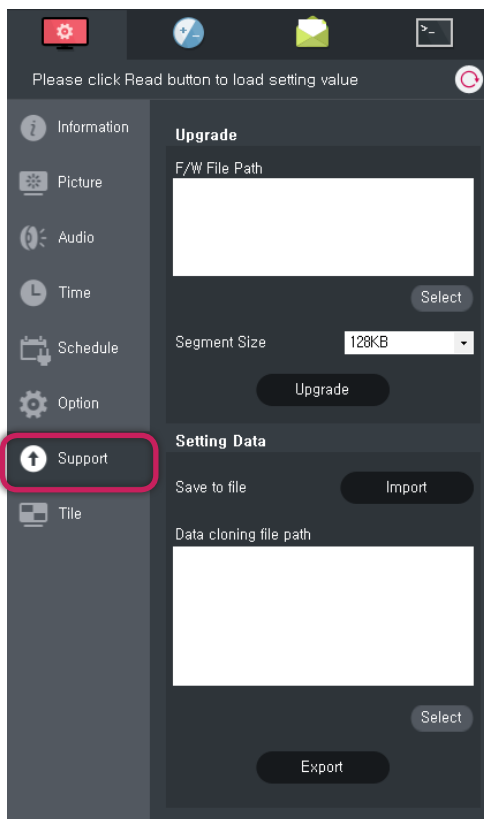
[Channel setting] is available only for the TV models that support SuperSign C. [Channel Type] allows you to set the broadcasting type (e.g. DVB, ATSC, etc.). [Channel No] allows you to select the channel number of your desired program.



Viewing [Support] Tab and Changing Settings

Upgrade the monitor firmware. Download the latest monitor firmware to the PC. Select a monitor to upgrade and use the Select File button to select the firmware. Select a segment size and click the [Upgrade] button to begin upgrading the monitor firmware.


[Setting Data] under [Support] allows you to save the settings of a particular monitor in a file and copy the stored settings in the file into a particular monitor. Click the [Import] button under [Setting Data] for the monitor to receive the settings and to save them in a file. Click [Select] under [Setting Data] to select the desired settings file, and then click [Export] to apply the settings.

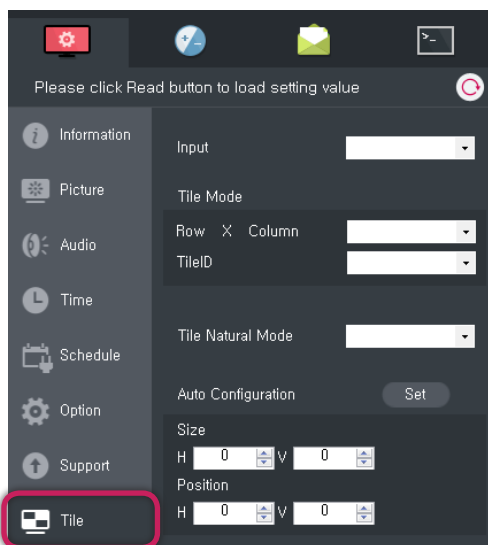


NOTE

- Segment size is basic data size for file transfer.
- Increase timeout or decrease segment size in an environment with lower network bandwidth.
- Upgrading requires Internet connection. Some models may not be supported.
- When upgrading a Micom file, the segment size is automatically set to 128 KB.
- Supports monitors connected via network only. Monitors connected through a serial cable will not function correctly.

Viewing [Tile] Tab and Changing Settings

Click the [Tile] tab and select the monitor you want to add as a tile from the monitors in [Device Management]. Click the  (Read) button to view the monitor's current information. Click the drop-down button on the right-hand side of each piece of information to change the settings. You can view and change the settings of [Tile Mode], [Tile ID], [Input], [Tile Natural Mode], [H Size], [H Position], [V Size], and [V Position]. Available items may differ depending on the model. If you want to configure items automatically, click the [Set] button next to [Auto Configuration].

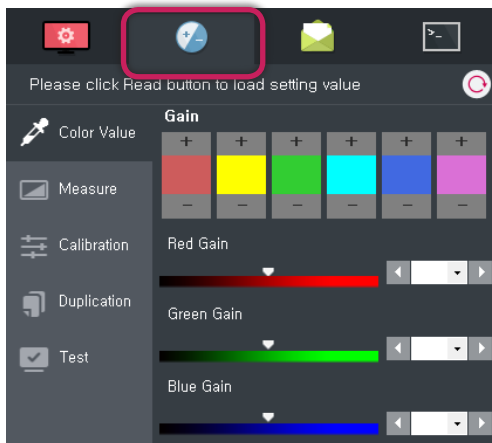


NOTE

- You can only set the Tile ID number as the same or smaller than the number of tiles set in Tile Mode.
- The Tile H and V size settings need to be changed to adjust the Tile H and V position.
- If RGB (PC) is selected as [Input], the [Auto Configuration] feature will be activated.
- When [Tile Natural Mode] is set to [On], [Size] and [Position] are deactivated. When [Tile Natural Mode] is set to [Off], [Size] and [Position] are activated.

Using [White Balance] Tab (Multi-Vision Only)


The [White Balance] tab allows you to [Color Value], [Measure], [Calibration], [Duplication], and [Test]. For more details, see the description of each tab below. To use the white balance tab, connect a supported sensor to your PC, then select the monitor you want to perform white balance on.



NOTE

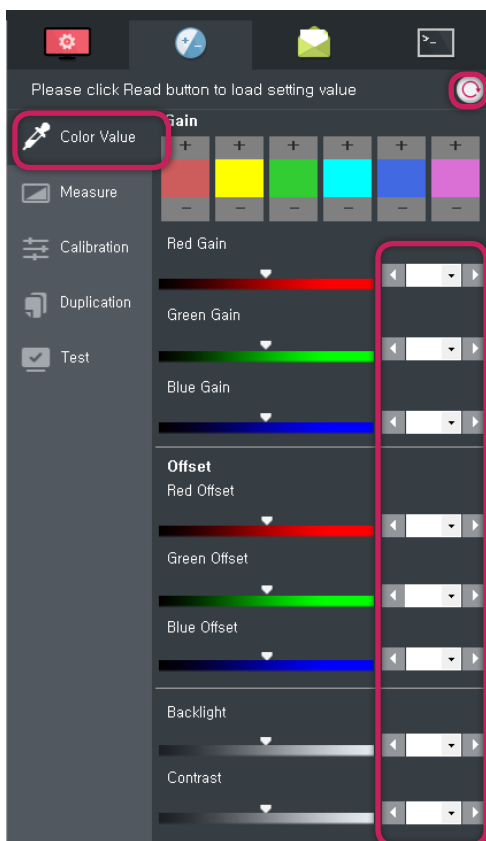
- Supported sensor types are Spyder3, Spyder4, LG Sensor (ACB8300), and i1Display3.
- The white balance feature is available only with the video wall model.
- Some standard models guarantee functionality but do not guarantee performance.

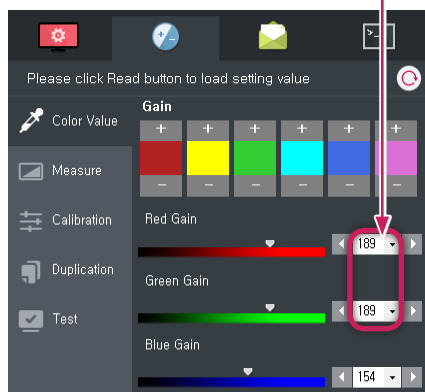
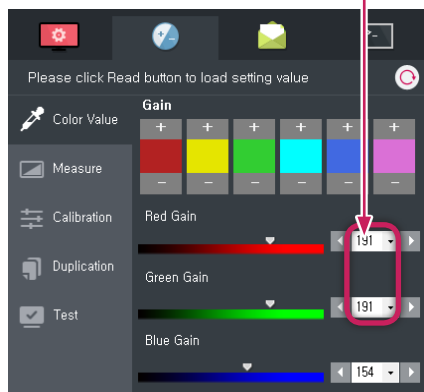
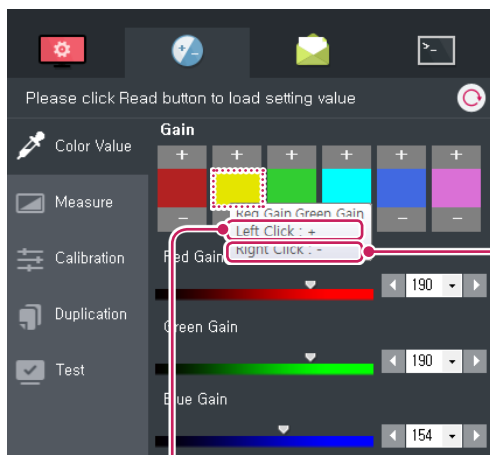
Viewing [Color Value] Tab and Changing Settings

Select a monitor in [Device Management], then click the  (Read) button to view the monitor's color information. Click the drop-down button on the right-hand side of each piece of information to change the settings. You can view and change the settings of [Red Gain], [Red Offset], [Green Gain], [Green Offset], [Blue Gain], and [Blue Offset]. Available settings may differ depending on the model.


With [Change Color Console], if you press "+" for red, green or blue, that color's Gain value increases and its tones become stronger in the monitor. If you press "-", the Gain value of red, green or blue decreases and that color's tones become weaker in the monitor. Changing the values of yellow, cyan or magenta changes two Gain values at the same time. With yellow, red and green Gain values are changed; with cyan, green and blue Gain values are changed; and with magenta, blue and red Gain values are changed.

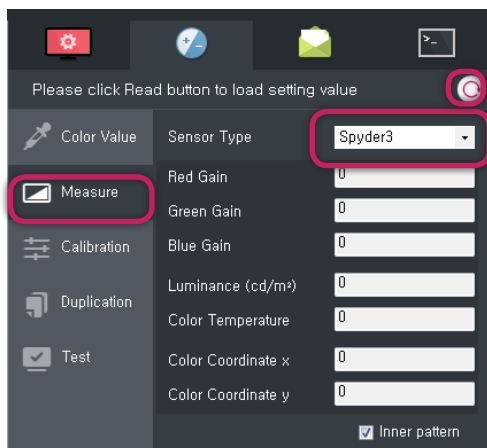
[Contrast] adjusts the contrast values. It is the same as the contrast adjustment on the monitor OSD menu. [Backlight] adjusts the backlight values of the monitor. It is the same as the backlight of the monitor OSD menu picture.





Viewing [Measure] Tab and Changing Settings

This function measures the white balance of the selected monitor using a sensor. Connect a supported sensor to your PC and select a [Sensor Type]. Select the monitor you want to measure in [Device Management] and click the  (Read) button under the white balance tab to view the values measured by the sensor on the screen.



Viewing [Calibration] Tab and Changing Settings

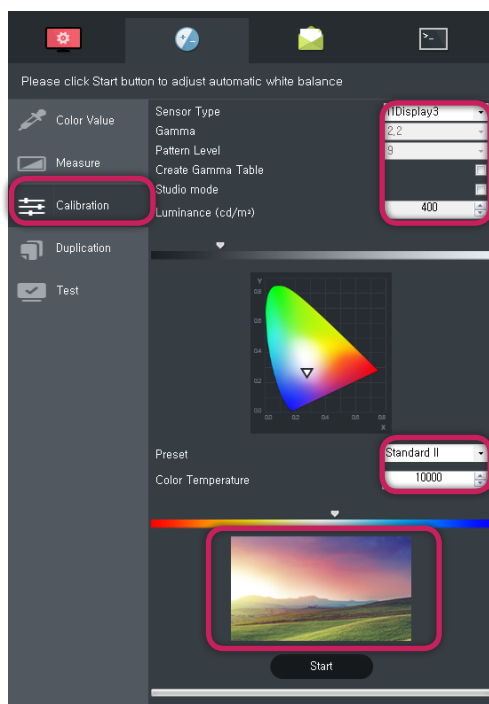
This function performs automatic white balancing of the monitor using a sensor. Connect a supported sensor to your PC and then select the monitor you want to calibrate in [Device Management]. Set [Sensor Type], [Gamma], [Pattern Level], [Luminance], [Color Temperature], etc. and click the [Start] button.

With [Sensor Type], you can choose the type of the sensor to use.

[Gamma] is the brightness calibration value and the value for Gamma calibration. SuperSign C sets "2.2" as default value. If you check the [Create Gamma Table] check box, a new gamma table is created and you can save it as a file when you finish the set-up process. Also, with [Duplication], you can use a saved file and view it on another monitor. By default, it is set to save.

[Pattern level] is each color(R/G/B/W) number of sampling when user check [Create Gamma Table]. We support 9/17/33 steps. [Luminance] represents the brightness of the monitor. The adjustable scope of luminance differs depending on the maximum luminance specification of the monitor.

[Preset] is a frequently used preset [Color Temperature] value. If you select [Preset], the preset value automatically becomes the [Color Temperature]. With [Color Temperature], if the value becomes low, the image changes to red tones, and if the value becomes high, the image changes to blue tones. By default, it is set to 10000K, a Standard II value of [Preset]. The Preview image (a virtual monitor screen) visually demonstrates the change of the image tones due to the change in the color temperature; you can see the change in the image tones according to the change of the color temperature.



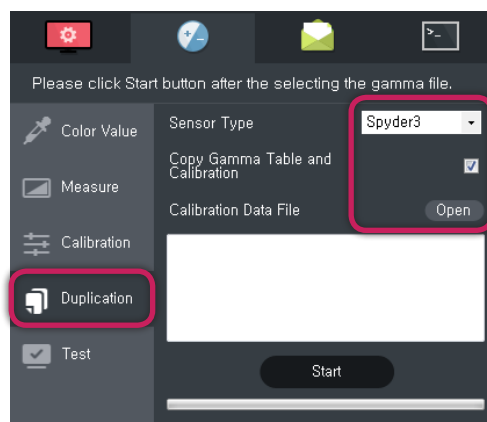
CAUTION

- The result of [Calibration] may differ depending on the performance and error range of the sensor used for [Calibration].
- The colors of the preview image are for illustrative purposes, so they may be different from the colors on your monitor screen.
- [Instant message] can cause problems in [calibration] working.

Viewing [Duplication] Tab and Changing Settings

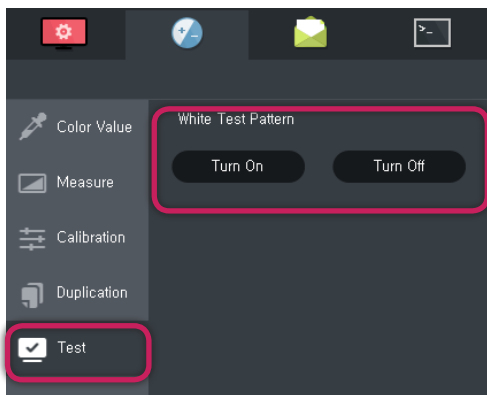
You can copy to a particular monitor the [Calibration Data File] that has been created from [Calibration]. Click [Duplication] under the [White Balance] tab, select the monitor you want to change in [Device Management], and then click [Open] and select the [Calibration Data File] you want to copy.

If you have checked the [Copy Gamma Table and Calibration] check box, the relevant sensors must be connected to your PC. The calibration will proceed automatically after the gamma table has been copied. The value set when the [Calibration Data File] has been created becomes the setting value.



Viewing [Test] Tab and Changing Settings

Provides the option to turn on or off the [White Test Pattern] of the monitor. Select the monitor on which you want to display the pattern and click the [Turn On] or [Turn Off] button in [Test] under the balance tab.



How to Install Spyder3 or 4 Driver

- 1 Connect purchased Spyder3 or 4 to PC via USB.
- 2 When the New Hardware Search Wizard window appears, select [Include this location in the search] and click [Browse].
- 3 Search for the driver in the folder where SuperSign C v3 is installed. The default folder is as follows:
C:\Program Files\LG Electronics\SuperSign C_v3.0.x.x\USB Driver\Spyder3 or C:\Program Files\LG Electronics\SuperSign C_v3.0.x.x\USB Driver\Spyder4
- 4 Click [OK].
- 5 You can use the white balance feature after the installation is complete.

Using [Instant Message] Tab

Allows you to write and send an instant message to any monitor. Compose a message, select the [Font Size], [Message Color], [Background Color], [Display Location], and [Text Scroll], then click the [Send] button to send the message. If you click the [Stop] button, the instant message shown on the selected monitor is terminated.

Text

Instant Message|

(15 / 60)

Font Size 26 T^ T^

Message Color

Background Color

Display Location

Text Scroll

Go Right

Send Stop

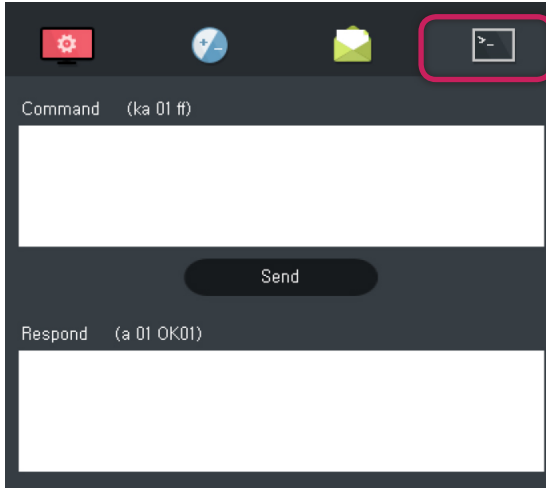


NOTE

- Instant Message requires an Internet connection.
- Depending on the specifications of each model, the feature or advanced settings may not be supported.
- The items not supported by the model are disabled.

Using [Command Console] Tab

Click the [Command Console] tab and select a monitor in [Device Management]. Enter a command in the command console tab and click the [Send] button to view a response to the command in the Response window.

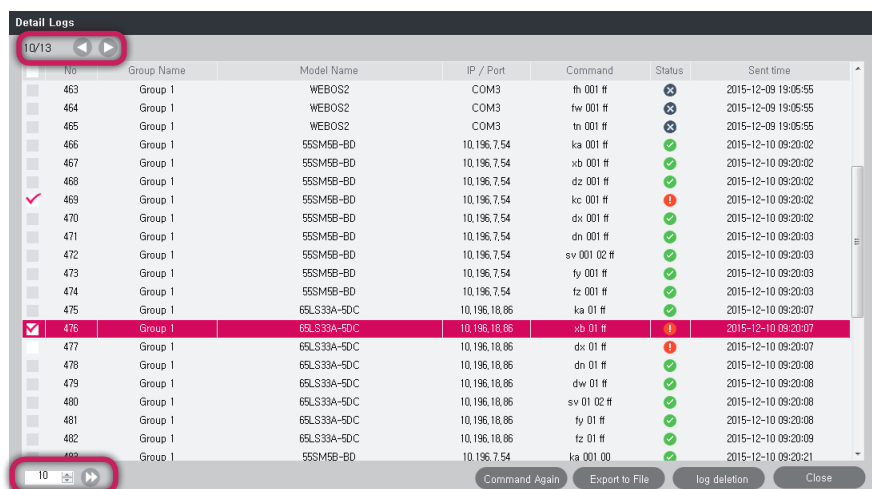
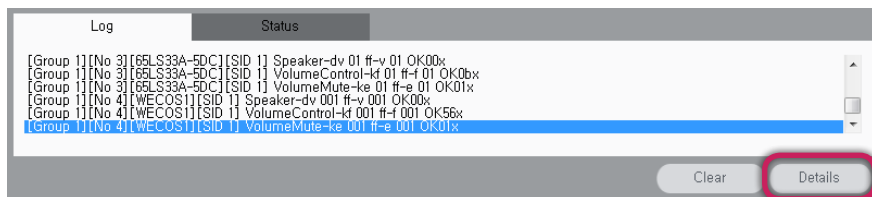


NOTE

- If the monitor is connected to a network, the commands for Power On do not work.
e.g., ka 01 01, mc 01 08, mc 01 C4.
- If a command is sent with a Set ID, the data is reflected to the designated monitor sets and each set sends an acknowledgement (ACK). If a zero (0) is sent with a Set ID, the data is reflected to all monitor sets and they do not send an acknowledgement (ACK).

Using [Log] Tab

Shows the output of the executed command. If you click the [Details] button, a pop-up that shows detailed information appears. If you click the [Export to file] button, you can download information as a file. Pressing the [Command Again] button can redo the selected command that failed. You can search the log with navigation button on the left of the screen.



NOTE

- : Command Success
- : Command Fail
- : The monitor has been deleted.
- : Command Not Supported

Using [Status] Tab

Shows the status of the monitor. If you click the [Details] button, a pop-up that shows monitor status information appears. The status information pane shows the connection status of Fan, Temperature(°C)/Critical temperature, Input, etc. in table format. If you click the [Export to file] button, you can download information as a file.

ENGLISH

Log

Status

Refresh

Details

Monitor status log

group 1


- OK(130), NG(139) @2015-03-13 03:48:19

No	Model Name	IP Address	Network	Fan	Temp1	Temp2	Temp3	BLU	Input	RGB Sensor	Time
1	55LV35A-5BC	10.196.6.178	NG	N/A	N/A	N/A	N/A	N/A	N/A	N/A	2015-03-12 16:43:13
2	WEBOS2	10.196.6.155	OK	N/A	35°C/(82)	N/A	N/A	N/A	OK	N/A	2015-03-12 16:43:13
3	55XF2B	10.196.6.248	OK	OK	28°C/(80)	27°C/(75)	43°C/(90)	OK	OK	N/A	2015-03-12 16:49:14
4	55LV35A-5BC	10.196.6.178	NG	N/A	N/A	N/A	N/A	N/A	N/A	N/A	2015-03-12 16:49:16
5	55LV35A-5BC	10.196.6.178	NG	N/A	N/A	N/A	N/A	N/A	N/A	N/A	2015-03-12 16:50:17
6	55LV35A-5BC	10.196.6.178	NG	N/A	N/A	N/A	N/A	N/A	N/A	N/A	2015-03-12 16:51:17
7	WEBOS2	10.196.6.155	OK	N/A	36°C/(82)	N/A	N/A	N/A	NG	N/A	2015-03-12 16:51:23
8	WEBOS2	10.196.6.155	OK	N/A	36°C/(82)	N/A	N/A	N/A	OK	N/A	2015-03-12 16:51:25
9	55LV35A-5BC	10.196.6.178	NG	N/A	N/A	N/A	N/A	N/A	N/A	N/A	2015-03-12 16:52:17
10	WEBOS2	10.196.6.155	OK	N/A	36°C/(82)	N/A	N/A	N/A	NG	N/A	2015-03-12 16:52:26
11	WEBOS2	10.196.6.155	OK	N/A	36°C/(82)	N/A	N/A	N/A	OK	N/A	2015-03-12 16:52:26
12	55LV35A-5BC	10.196.6.178	NG	N/A	N/A	N/A	N/A	N/A	N/A	N/A	2015-03-12 16:53:17
13	55LV35A-5BC	10.196.6.178	NG	N/A	N/A	N/A	N/A	N/A	N/A	N/A	2015-03-12 16:54:17
14	55LV35A-5BC	10.196.6.178	NG	N/A	N/A	N/A	N/A	N/A	N/A	N/A	2015-03-12 16:55:17
15	55LV35A-5BC	10.196.6.178	NG	N/A	N/A	N/A	N/A	N/A	N/A	N/A	2015-03-12 17:00:50
16	WEBOS2	10.196.6.155	OK	N/A	36°C/(82)	N/A	N/A	N/A	OK	N/A	2015-03-12 17:08:51
17	55XF2B	10.196.6.248	OK	OK	28°C/(80)	27°C/(75)	43°C/(90)	OK	OK	N/A	2015-03-12 17:08:51
18	55XF2B	10.196.6.248	OK	OK	28°C/(80)	27°C/(75)	43°C/(90)	OK	OK	N/A	2015-03-12 17:08:53
19	WEBOS2	10.196.6.155	NG	N/A	N/A	N/A	N/A	N/A	N/A	N/A	2015-03-12 17:09:06

Export to File

Log deletion

Close

 **NOTE**

- If the monitor is not in the supported model list of SuperSign C V3, The feature will not be activated.



To obtain the source code under GPL, LGPL, MPL, and other open source licenses, that is contained in this product, please visit <http://opensource.lge.com>. In addition to the source code, all referred license terms, warranty disclaimers and copyright notices are available for download. LG Electronics will also provide open source code to you on CD-ROM for a charge covering the cost of performing such distribution (such as the cost of media, shipping, and handling) upon email request to opensource@lge.com. This offer is valid for three (3) years from the date on which you purchased the product.