



\* All images in this brochure are for illustrative purposes only and may differ from the actual products and the actual screen images shown on the displays depending on usage circumstances.

## **LG x Logitech Video Collaboration**

# Work Smarter with Video Conferencing Solutions by LG & Logitech

Ensuring business continuity, employee welfare, and workforce productivity are top priorities for companies of all sizes. Logitech, a global leader of peripherals for PC and video conferencing, and LG, a global leader in the professional display industry, introduce a variety of conferencing devices and solutions for corporate environments from personal workspaces to conference rooms. LG's extensive range of products, matched with Logitech's simple and intuitive video conferencing solutions, offer an excellent work environment overcoming challenges faced by hybrid working teams.



Work has changed. Many organizations have moved to video conferencing for many reasons, including schools, (virtual classrooms), medical appointments (telemedicine) as well as building out safe meeting rooms in workplaces.

This moment is an opportunity to reimagine workspaces, making them more connected and collaborative, wherever work needs to happen. The collaboration between LG and Logitech offers flexible video conferencing solutions that can be used in a variety of spaces to help keep your employees and customers connected no matter where they are located.

We are here to support your teams to safely collaborate and make quick business decisions through fast, efficient and reliable video conferencing from various locations.

# Benefits from LG & Logitech Collaboration

## Simple and Intuitive Meeting Experience

LG and Logitech offer you a meeting room package that includes LG's durable, high quality meeting room display with Logitech's intuitive video conferencing devices. Plug-and-Play to set up, one touch to start the meeting, and you are ready to be heard and seen clearly with excellent picture quality.



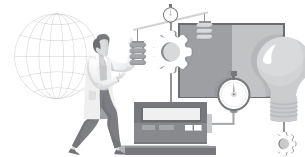
## Solutions for All Rooms

LG's wide range of products, including LED Signage, UHD Signage, 88" Ultra Stretch, and UltraWide™ Monitor, combined with Logitech's diverse range of video conferencing equipment meet the various needs of many meeting rooms. Adapt your space to your individual needs with a variety of integrated product combinations.



## Market Proven Devices

LG and Logitech are continuously exploring customers' needs and developing innovative technology in their own specialized fields. This collaborative effort has resulted in optimal solutions that help turn nearly any space into a functional meeting space.



# Video Conferencing Made Simple.

Connect via USB or run in appliance mode\* to go from box to video conferencing quickly and easily.

### TYPE 1 Direct Plug and Play with your own devices



Turn on the display and the camera by connecting to your devices\*\*.



During the meeting, easily switch between presenters through the use of a cable connection.

### TYPE 2 One Touch Start with Logitech Tap



Touch and start a video conference with simplified workflows.



Instantly share content and easily switch video conferencing to an in-room meeting.



All in one meeting room solution optimized to work with many conference platforms,\* no computer needed. Or connect via USB using computer of choice.

\* Works with GoTo Meeting, Microsoft Teams, Pexip, Ring Central, Zoom

\*\* In case of LG Signage, DPM (Display Power Management) needs to be enabled within the Installation Menu, and it may not be available in certain products.

# Why LG Meeting Room Displays with Logitech



## Quality

IPS technology featuring a wide viewing angle, as well as high resolution up to UHD. This enables the clear delivery of messages by showing documents including both image and video to help minimize distortion. Logitech's HD video and RightSense™ technologies provide remarkable clarity and quality. Paired together you'll have high quality solutions for both small and large meeting rooms.

\* Specific features can differ from product to product and may not be available on all products.



## Engagement

A simple connection is possible through a diverse interface allowing the connection of different devices to the screen. Also, collaboration between LG & Logitech allows users to easily participate and focus on your meetings.

\* Specific features can differ from product to product and may not be available on all products.



## Reliability

To ensure your meetings run smoothly, displays should be working properly, even if there are several continuous meetings for a long periods of time. LG Signage provides a reliable and stable performance through the use of a powerful SoC (System on Chip).

Specific features can differ from product to product and may not be available on all products.



## Unique & Multi Purpose Products

The full line up of LG Signage can be installed in a variety of spaces along with Logitech's customizable set ups for video conferencing.

\* Please contact to LG sales representative in your region to find best products for your spaces and concepts.



## Monitoring and Management

With LG ConnectedCare (an optional service\*), LG Signage can be monitored in real-time to help provide a reliable meeting experience. Also, streamline staff training with Logitech Tap adding "one-touch join" control to the meeting room.

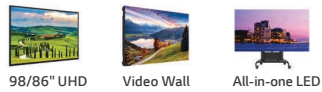
\* This is an optional service. Availability may differ by region and may not available with certain products. please contact an LG sales representative in your region for further details.

# Recommended Products for Meeting Rooms

## Large Room



### LG Digital Signage



### Logitech



## Medium Room



### LG Digital Signage



### Logitech



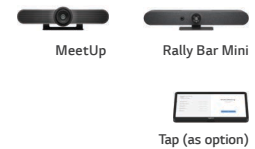
## Small Room



### LG Digital Signage



### Logitech



## Huddle Room



### LG Digital Signage



### Logitech



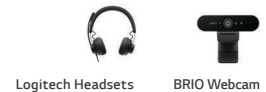
## Home Office



### LG Monitor



### Logitech



# LG Products

## All-in-one LED Series

👤 21 ~ 35



### LAEC | 136" P1.50

- Resolution : 1,920 × 1,080
- Brightness : 500 nit (Typ.)
- Contrast Ratio : 5,000 : 1
- Screen Size (W×H) : 3,000 × 1,687.5 mm
- Design Feature : Controller and Sound Embedded, Optional Stand\*

\* Stand needs to be purchased separately.

## 0.44mm Even Bezel

👤 21 ~ 35



### SVM5F-H | 55"

- Resolution : 1,920 × 1,080
- Brightness : 500 nit (Typ.)
- Bezel Width : 0.44 mm (Even)
- Surface Treatment (Haze) : 28%
- Operation Hours : 24 / 7
- Key Feature : Smart Calibration

## 32:9 Ultra Stretch

👤 6 ~ 20

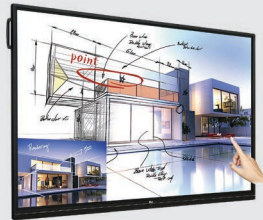


### BH7F | 88"

- Resolution : 3,840 × 1,080
- Brightness : 700 nit (Typ.)
- Surface Treatment (Haze) : 3%
- Operation Hours : 24 / 7

## Interactive Digital Board (IDB)

👤 6 ~ 20



### TR3BF | 86" 75" 65"

- Resolution : 3,840 × 2,160
- Brightness : 86/75" 330 nit (w/Glass, Typ.), 65" 350 nit (w/Glass, Typ.)
- Operation Hours : 16 / 7
- Touch Type : IR
- Multi Touch Point : Max 20 Points

## UHD Series

👤 3 ~ 35



### UH5F-H | 98" 86" 75" 65" 55" 49" 43"

- Resolution : 3,840 × 2,160
- Brightness : 500 nit (Typ.)
- Surface Treatment (Haze) : 28%
- Operation Hours : 24 / 7

## UltraWide™ Monitor

👤 1



### BN770 | 34"

- Resolution : UltraWide QHD (3,440 × 1,440)
- Screen Ratio : 21 : 9
- Key Features : HDR10, sRGB 99% (Typ.), Color Calibrated, Built-in Speakers

# Logitech Products

## Rally Plus



- UHD 4K resolution
- Room-filling sound (up to 46 seat)
- AI-powered with RightSense™ technologies
- PTZ lens, Rally Speakers (2), Rally Mic Pods (up to 7)
- One-touch join with tap
- USB connect with compute or laptop

## Rally Bar



- UHD camera, automated pan, tilt lens with 15X HD zoom
- Adaptive beamforming mics, room-filling sound, high-performance audio
- AI-powered with RightSense™ technologies
- One-touch join with tap
- Run in appliance mode\* or USB connect with compute or laptop

## Rally Bar Mini



- UHD camera with a pan, tilt lens with 4X HD digital zoom
- Adaptive beamforming mics, room-filling sound
- AI-powered with RightSense™ technologies
- One-touch join with tap
- Run in appliance mode\* or USB connect with compute or laptop

## Tap



- Touch control for meeting collaboration
- Easy to start video conferencing
- Flexible mounting options

## Brio



- UHD video calling
- 5X digital zoom in FHD
- Autofocus, 2 omni-directional mics, privacy shade
- Multiple mounting options
- Field of View : Diagonal 90°, Horizontal 82.1°, Vertical 52.2°

## Zone Wired



- Noise-canceling dual mic technology
- Convenient Inline controls
- Wired USB-C plus a USB-A adapter (included) for simple plug and play reliability
- Certified for Microsoft® Teams, Skype™ for Business, Google Meet and Voice™

Before

After



\* Works with GoTo Meeting, Microsoft Teams, Pexip, Ring Central, Zoom

