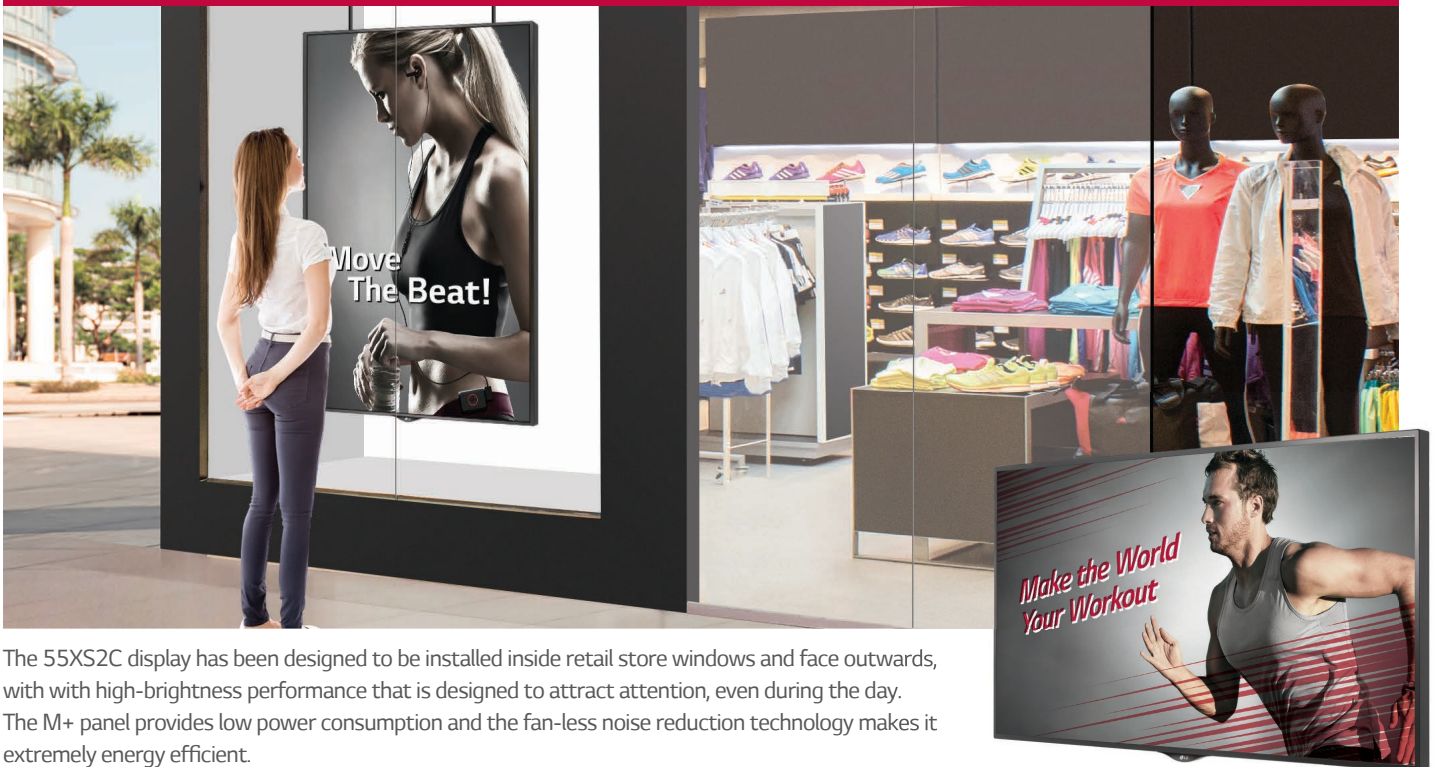


Window-Facing Display- 55XS2C

Outstanding Brightness with Quiet Operation



The 55XS2C display has been designed to be installed inside retail store windows and face outwards, with high-brightness performance that is designed to attract attention, even during the day. The M+ panel provides low power consumption and the fan-less noise reduction technology makes it extremely energy efficient.

Key Features

Outstanding Visibility



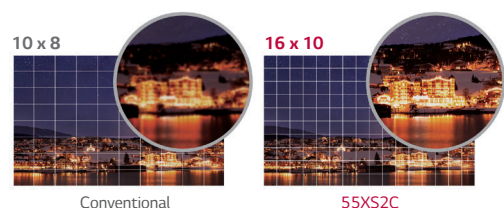
Increased Brightness

The brightness has been increased to 2,500 cd/m² compared to the previous WX30 model, making the XS series the ultimate screen for outdoor visibility.



Advanced Local Dimming

The backlighting in specific areas of the screen can be controlled to increase contrast and provide a clearer image.

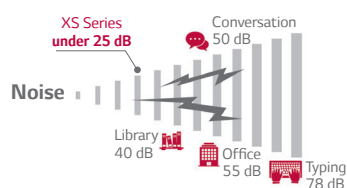


Quiet Operation



Fan-Less Noise Reduction

The XS Series is the perfect choice for an in-window environment due to the removal of the cooling fan. Its operating noise level is under 25 dB, which is quieter than a typical recording (30 dB).

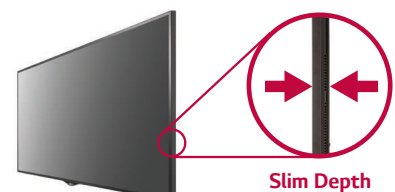


Enhanced Design Configuration



Slim Depth

The slim depth saves space for installation and helps keep the enclosure design sleek.



Window-Facing Display- 55XS2C

Outstanding Brightness with Quiet Operation



Screen Size

55"
(54.64" measured diagonally)

XS Series

- Brightness : 2,500 cd/m²
- Interface : HDMI (2) / DP / DVI / RJ45 / IR / RS232C / USB / External speaker out (L/R)

Other Features

Cost Effective



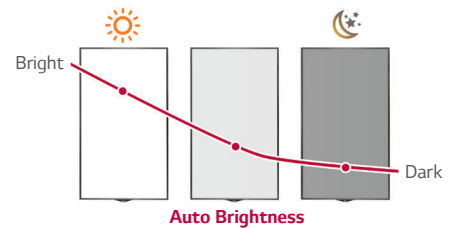
Low Power Consumption Using The M+ Panel

The M+ panel offers excellent energy efficiency and cost savings and decreases power consumption by 30% compared to conventional RGB panels



Smart Brightness Control

The auto-brightness sensor and preset time scheduler save power whenever possible.



Product Reliability



Dust & Humidity Protection

The conformal coating enhances circuit board reliability by protecting it from dust, iron shavings, humidity and other harsh conditions.



High Operating Temperature

The panel offers superb reliability under high operating temperatures and reduces cooling fan usage.

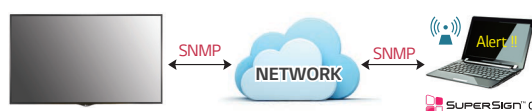


Easy Maintenance



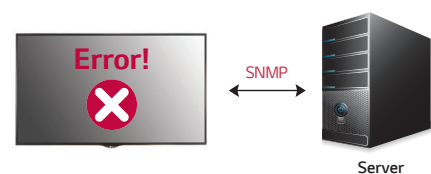
Real-Time Remote Monitoring

When an alarm occurs, an email notification is sent through the SNMP using the SuperSign C or SI software. In case a malfunction or error occurs, real-time remote care is available.



Saving of System Log Files

The LG Window Facing Display supports log file back-up for fault clarification when the display fails. This allows you to conveniently check when an error has occurred.



Window-Facing Display- 55XS2C

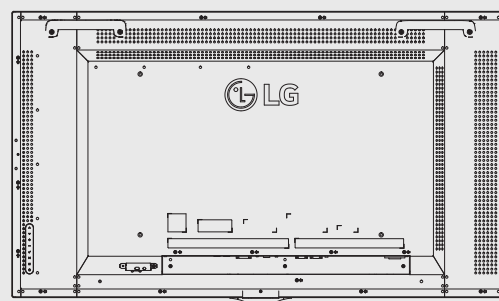
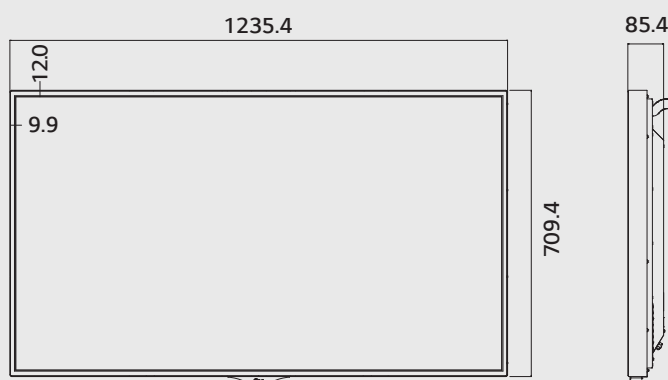
Outstanding Brightness with Quiet Operation

Dimensions (unit : mm)

55XS2C

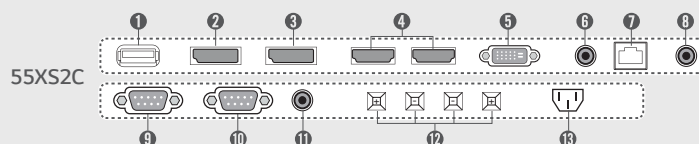
1,235.4 x 709.4 x 85.4 /

26.7 kg



Connectivity

- | | |
|-----------------|-------------------------|
| ① USB IN | ⑧ PIXEL SENSOR |
| ② DP IN | ⑨ RS-232C IN |
| ③ DP OUT | ⑩ RS-232C OUT |
| ④ HDMI IN | ⑪ EXT IR IN |
| ⑤ DVI-D IN | ⑫ SPEAKER OUT (8 Ω) R/L |
| ⑥ AUDIO IN (PC) | ⑬ AC IN |
| ⑦ LAN | |



Specifications

XS Series		55XS2C
PANEL	Screen Size	55" (54.64" measured diagonally)
	Panel Technology	IPS, M+ (WRGB)
	Aspect Ratio	16:9
	Native Resolution	1,920 x 1,080 (FHD)
	Brightness	2,500cd/m ² (Typ.), 2,250cd/m ² (Min.)
	Contrast Ratio	1,000:1
	Dynamic CR	500,000:1
	Viewing Angle (H x V)	178 x 178
	Surface Treatment	ARC (Haze 0%), QWP
	Orientation	Landscape & Portrait
CONNECTIVITY	Input	HDMI(2), DP, DVI-D, Audio, USB
	Output	DP, External Speaker Out (L/R)
	External Control	RS232C In/Out, RJ45, IR Receiver, Pixel Sensor
PHYSICAL SPECIFICATION	Bezel Color	Black
	Bezel Width	9.9 mm (L/R), 12.0 mm(T/B)
	Monitor Dimension (W x H x D)	1,235.4 x 709.4 x 85.4 mm
	Weight (Head)	26.7 kg
	Carton Dimensions (W x H x D)	1,344 x 215 x 820 mm
	Packed Weight	31.9 kg
VESATM Standard Mount Interface		600 x 400 mm
SPECIAL FEATURES		Temperature sensor, Auto brightness sensor, Tile mode (Up to 15x15), Natural mode@Tile mode, Source selection, Brightness/Contrast/Backlight, DPM select, Energy saving, Smart energy saving, File play with USB, Internal memory, Wi-Fi dongle ready
ENVIRONMENT CONDITIONS	Operation Temperature Range	0°C to 45°C (w/o Direct sunlight) 0°C to 35°C (Direct sunlight)
	Operation Humidity Range	10% to 80%
POWER	Power Supply	100-240 V~, 50/60 Hz
	Power Type	Built-In Power
	Power Consumption Typ./Max	240 W / 250 W 140 W
STANDARD (CERTIFICATION)	Safety	UL / cUL / CB / TUV / KC
	EMC	FCC Class "A" / CE / KC
SOFTWARE COMPATIBILITY	SuperSign VV/Lite	Yes
	SuperSign C	Yes
ACCESSORIES	Included Accessories	Remote control (including battery 2ea), Power cord, HDMI cable, Manual (ESG&EIG)
	Optional Accessories	WM-L640V (Landscape Wall-mount), WM-P640V (Portrait Wall-mount), KT-SP0, AN-WF500, KT-SP0

Download LG Commercial Display Mobile App



Learn more www.lg.com/b2b

YouTube youtube.com/LGCommercialDisplay

LG may make changes to specifications and product descriptions without notice.
Copyright © 2017 LG Electronics Inc. All rights reserved. "LG Life's Good" is a registered trademark of LG Corp.
The names of products and brands mentioned here may be the trademarks of their respective owners.