

Pro:Centric™

Server (PCS150R)



The PCS150R is a stand-alone Linux appliance that manages and controls LG's Pro:Centric Free-To-Guest (FTG) Application, delivering unique digital content to hotel guest room TV's via the existing RF or IP distribution network.

The PCS150R can also be used to remotely edit the FTG televisions' channel map and installer menu configuration, dramatically reducing installation cost and future room visits. Please contact your LG sales representative for a list of compatible television models.

A browser-based Admin Client GUI is provided for System Integrator (SI) partners and hotel staff to simplify the support and maintenance of the Pro:Centric system, including the ability to remotely manage system back-ups, software updates, billboard content and TV configuration settings.

Utilizing a spare RF channel for communications, the PCS150R broadcasts it's information to Pro:Centric enabled TVs enabling guests to select customized content for in-room viewing using the TV remote control, such as hotel amenities, daily weather, and interactive electronic program guide (EPG). The appliance captures data updates via the Internet to populate its EPG, weather forecast and other services, enabling the most up to date information to be presented to the guests' TVs.

PCS150R now features a frequency-agile modulated RF output (QAM), in addition to IP and ASI outputs. A dedicated Ethernet output port is provided to enable multi-cast broadcast of content within an IP environment.

The Pro:Centric also supports 3rd Party developed Applications (Java™/Adobe® Flash®) from LG's partners operating within Pay-Per-View (PPV) entertainment systems.

SIMPLE INSTALLATION

Uses the existing RF/IP network, internet connection input, and modulated RF (QAM), IP or ASI output

MINIMAL HEAD-END RACK-SPACE

Small, lightweight chassis, 1U height profile, 19-inch rack-mountable

RAPID CONTENT CREATION

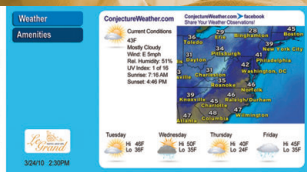
Using Web Editor/Content Wizard Tool to quickly create and edit hotel-branded content

REMOTE SUPPORT

Remote administration, configuration, and maintenance via VPN server; Management of television channel map and installer menus



Portal - Welcome Page



Weather Billboard



Channel Selection Guide

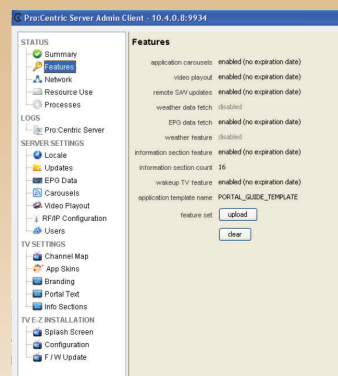
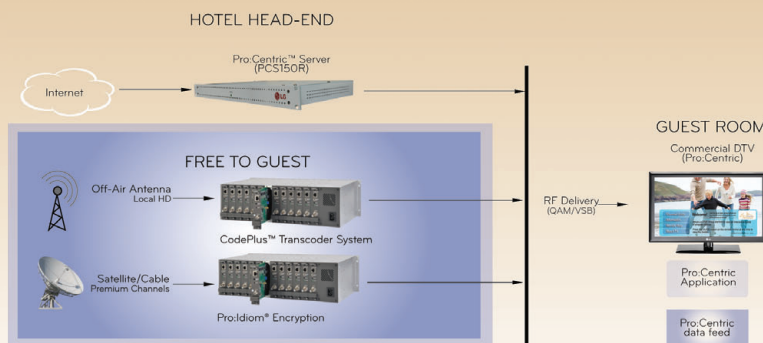
SERVER ADMIN CLIENT

An Admin Client Graphical User Interface (GUI) is provided and is remotely accessible via the Internet using VPN service and a standard web browser, to provide System Integrator administration users with a full suite of features to manage and support the Pro:Centric system, including:

- System status and logs, and server settings
- Configuration for Channel Guide lineup
- Hotel branding and Billboard creation and editing
- Managing television configurations settings and software updates

Two user profiles are supported: Standard User and Administration User, governing menu access by function.

For further details, refer to the Pro:Centric™ Server Admin Client User Guide, P/N: 206-4143, (also accessible on the system).

**TYPICAL FTG Pro:Centric PCS150R INSTALLATION****Pro:Centric VPN SERVER**

Remote management of the PCS150R server functionality is provided via a secure, built-in VPN client that connects to the centralized VPN server. In this way, remote configuration management, remote software updates and other services are supported. Free hosting of the service is provided by LGE during the warranty period. Extended support plans are available.

INSTALLATION REQUIREMENTS:

Installation of the PCS150R requires the following:

- 1U rack space in the Head-end room
- Ethernet Connection (VPN and FTP open)
- 1 x 110/120VAC power outlet
- 1 coax drop to the RF combiner to feed the output of the server into the RF network

Note that no local monitor or keyboard is required for the server.

For further details on the Server installation, refer to the **Installation & Setup Guide, Part No: 206-4142**.

SYSTEM SOFTWARE

Linux OS kernel
Java for PPC Sun JRE
Globally Executable MHP (GEM) server applications

DIMENSIONS

Unit Dimensions (W×H×D) 19.0" x 1.7" x 8.5"
Unit Weight 3.45 lbs.

ENVIRONMENTAL STORAGE CONDITIONS

Temperature -4° to 158° Fahrenheit (-20° to 70° Celsius)
Humidity 95% Non-condensing

ENVIRONMENTAL OPERATING CONDITIONS

Operating Temperature 32° to 104° Fahrenheit (0° to 40° Celsius)
Humidity 95% Non-condensing

ELECTRICAL

DC Input +12V DC @ 4 Amps
Impedance at ASI Out Jack 75 ohms
Level at ASI Out Jack 800 mv
Ethernet x 2 ports 10/100/1000BaseT
USB x 2 ports USB2.0
RS-232 DB-9 Command Line Interface port

WARRANTY

Limited Warranty (Parts/Labor) 1 Year
UPC Code 7 19192 90208 4

REGULATORY COMPLIANCE

FCC, RoHS, UL

LGsolutions.com

LG Electronics U.S.A., Inc.
Commercial Displays
2000 Millbrook Drive
Lincolnshire, IL 60069

Customer Service: 888.865.3026
www.LGsolutions.com/support

Contact your LG Regional Sales Representative:
Hospitality: 800.228.1236
Vertical Markets: 800.897.8788
Channel: 800.897.8871

E-mail: info@LGsolutions.com

SPEC_PCS150R_011206_PR

Pro:Centric.

All screen images are simulated. Dimensions and weights are approximate. Design, features and specifications subject to change without notice.

© Copyright 2012 LG Electronics USA, Inc. All Rights Reserved. "LG Life's Good" is a registered trademark of LG Corp. Pro:Centric is a trademark of LG Electronics Inc. All other product and brand names are trademarks or registered trademarks of their respective companies.

Printed in the USA. January 2012



LG
Life's Good