

M38D-B

► 20M38D-B

20" class (19.5" diagonal)

► 19M38D-B

19" class (18.5" diagonal)



FEATURES

4 SCREEN SPLIT

- Efficiently run several programs and have multiple active windows on the screen at the same time.

ON SCREEN CONTROL

- OnScreen Control allows you to modify your screen configuration by a few clicks without forcing physical buttons built in monitor.

FLICKER SAFE

- LG's Flicker-Safe technology protects users' eyes from fatigue by reducing flickering to almost zero.

SMART ENERGY SAVING

- LG's Smart Energy Saving Mode reduces power consumption without lowering the brightness of the monitor.

SPECIFICATIONS

Native Display Resolution

20" 1600 x 900

19" 1366 x 768

Contrast Ratio 600: 1

5MS (G to G) Response Time

Color Weakness Mode, Flicker-Safe, My Display Presets, PIP, On Screen Control, Screen Split, Reader Mode

Vesa™ Compliant Wall Mountable

3-Year Limited Warranty Parts/Labor/Backlight



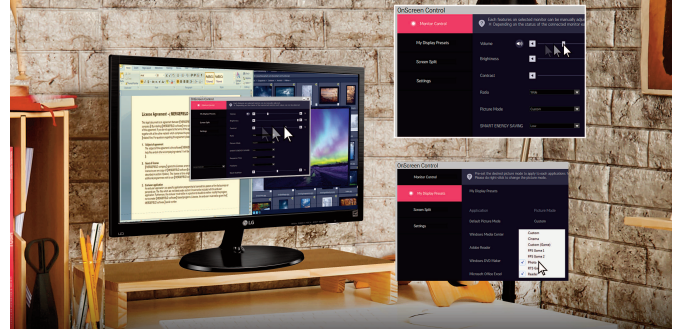
PROTECT YOUR EYES AND VIEW IN COMFORT

Did you know that your eyes are affected by flickers on the monitor while you may not have seen them? Over time, working, gaming and movie viewing can cause eye strain and fatigue. But, Flicker Safe and Reader Mode help maximize visual comfort by protecting your eyes from harmful blue light and reducing the flicker level to almost zero.



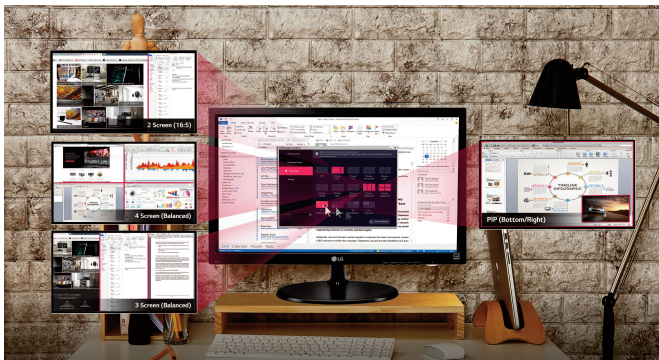
PRESET CUSTOMIZED OPTIONS WITH JUST A CLICK

OnScreen Control allows you to modify your screen configuration by a few clicks without forcing physical buttons built in monitor. My Display Presets offers customized picture mode for specific software. It has automatically applied to picture mode you already preset. You don't need to select the picture mode each time.



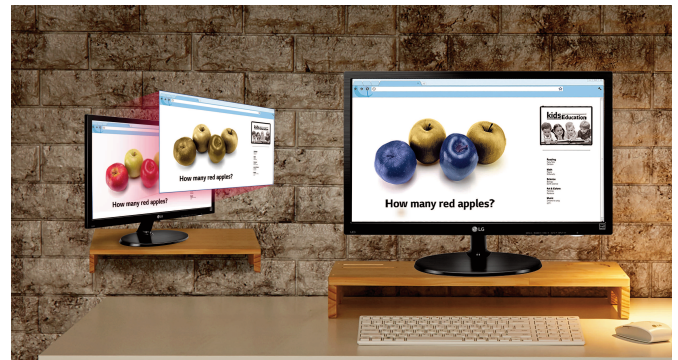
CUSTOMIZE YOUR WORKSPACE FOR MULTITASKING

Screen Split divides the display into multiple sections for different tasks by resizing the windows on the screen. Its advanced options have expanded to include 4 types of Picture-in-Picture(PIP) Mode among 14 options. With PIP Mode you can work on the main screen while watching a video in a smaller window floating on the screen.



OFFERS IMPROVED COLOR VISION TO COLOR WEAKNESS

Color revision algorithms are used to help those with color weakness who have difficulty distinguishing certain ranges of colors.



M38D-B

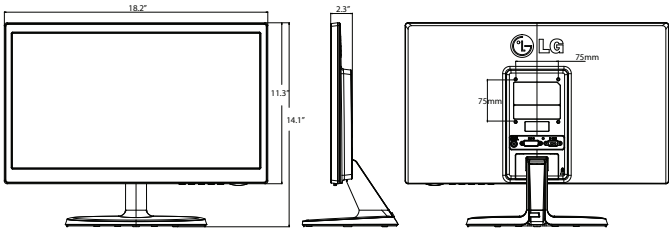
▶ 20M38D-B

20" class (19.5" diagonal)

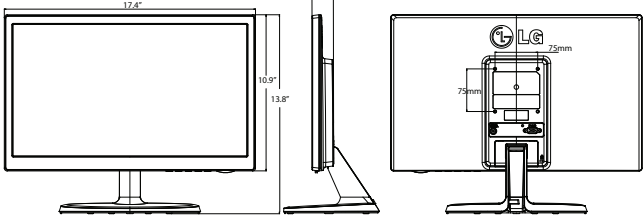
▶ 19M38D-B

19" class (18.5" diagonal)

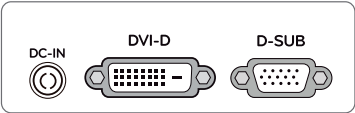
20M38D-B



19M38D-B



Jack Panel



| FEATURE | Model | 20M38D-B | 19M38D-B |
|---------------------|--------------------------------|----------------------------|----------------------------|
| | Size | 20" class (19.5" diagonal) | 19" class (18.5" diagonal) |
| | Panel Type | TN | |
| | Color Gamut (CIE1976) | 72% | |
| | Color Depth (Number of Colors) | 16.7M colors | |
| | Pixel pitch (mm) | 0.271X0.262 | 0.3X0.3 |
| | Aspect Ratio | 16:9 | |
| | Resolution | 1600 x 900 | 1366 x 768 |
| | Brightness (Typ.) | 200cd/m2 | |
| | Contrast Ratio (Original) | 600:1 | |
| | (DFC) | Mega | |
| | Response Time_Typ.(on/off) | 5ms | |
| | Viewing Angle(CR≥10) | 90/65 | |
| JACK INPUT / OUTPUT | Surface Treatment | Anti glare ,3H | |
| | D-Sub | Yes | |
| | DVI-D | Yes | |
| | [Jack Location] | Back | |
| POWER | Type | Adapter | |
| | Input | 100 ~ 240Vac, 50/60Hz | |
| | Normal On (EPA) | 16W | 13W |
| | Normal On (typ.) | 20W | 18W |
| | Sleep Mode (Max) | 0.3W | |
| | DC Off (Max) | 0.3W | |
| | | | |
| FREQUENCY | H-Frequency (D-Sub) | 30 ~ 83kHz | 30 ~ 61kHz |
| | V-Frequency (D-Sub) | 56 ~ 75Hz | 56 ~ 75Hz |
| | H-Frequency (DVI-D) | 30 ~ 83kHz | 30 ~ 61kHz |
| | V-Frequency (DVI-D) | 56 ~ 75Hz | 56 ~ 75Hz |

| CONTROL KEY | Model | 20M38D-B | 19M38D-B |
|-----------------|------------------------------------|--------------------------------------------------------------------------------------------------------------------------------------------------------------------|----------------------|
| | Key Number (Power Key Included) | 6 | |
| | Key Type | Tact Type | |
| | LED Color (On mode) | White | |
| | LED Color (Power save mode) | White Blinking | |
| | [Key Location] | Bottom | |
| OSD | Languages | English, Germanic, French, Spanish, Italian, Swedish, Finnish, Portuguese, Polish, Russian, Greek, Chinese, Japanese, Korean, Ukrainian, Portuguese(brazil), Hindi | |
| SPECIAL FEATURE | Picture Mode | Yes | |
| | Reader Mode | Yes | |
| | Original Ratio | Yes | |
| | DDC/CI | Yes | |
| | HDCP | Yes | |
| | Intelligent Auto (Auto Adjustment) | Yes | |
| | Key Lock | Yes | |
| | Plug & Play | Yes | |
| | Color Weakness | Yes | |
| | Flicker safe | Yes | |
| | Smart Energy Saving | Yes | |
| | 4 screen split | Yes | |
| COLOR | On Screen Control | Yes | |
| | Front | Black Hairline | |
| | B/Cover | Black Texture | |
| | Stand | Black high glossy | |
| | Base | Black Hairline | |
| STAND | Base Detachable | Yes | |
| | Tilt (Angle) | Yes / -5° ~ 20° | |
| CABINET | WxHxD (with Stand) | 18.2" x 6.6" x 14.1" | 17.4" x 6.6" x 13.8" |
| | WxHxD (without Stand) | 18.2" x 2.3" x 11.3" | 17.4" x 2.3" x 10.9" |
| | Box | 21.3" x 14.2" x 4.6" | 20.0" x 13.5 x 4.6" |
| | VESA™ Standard Mount | 75mm x75mm | 75mm x75mm |
| | Weight (with Stand) | 4.9 lbs | 4.6 lbs |
| | Weight (without Stand) | 4.4 lbs | 4.2 lbs |
| | Box | 6.6 lbs | 6.2 lbs |
| STANDARD | UL (cUL) | Yes | |
| | TUV-TYPE | Yes | |
| | FCC-B, CE | Yes | |
| | EPA 6.0 | Yes | |
| | EPEAT | Yes (Gold) | |
| | Windows | Yes (win10) | |
| ACCESSORIES | Power Cord | Yes | |
| | D-Sub | Yes | |
| OTHER | UPC | 7 19192 20017 3 | 7 19192 20016 6 |
| | Warranty | 3-Year Limited Warranty (Parts/Labor/Backlight) | |





www.LG.com/us/commercial

LG Electronics U.S.A., Inc.
HE B2B Division
2000 Millbrook Drive
Lincolnshire, IL 60069

Customer Service: 888.865.3026
www.LG.com/us/commercial/display-support

Contact your LG Regional Sales Representative:
Channel: 800.897.8871
Hospitality: 800.228.1236
E-mail: info@LGsolutions.com

LG_SPEC_M38D-B_031629_PR

All screen images are simulated. Dimensions and weights are approximate. Design, specifications, and features subject to change without notice.

© Copyright 2016 LG Electronics USA, Inc. All Rights Reserved. "LG Life's Good" is a registered trademark of LG Corp.

ENERGY STAR is a registered trademark of the U.S. Environmental Protection Agency. In Plane Switching is a trademark of LG Philips LCD Ltd. VESA is a trademark of Video Electronics Standards Association. HDMI, the HDMI logo and High-Definition Multimedia Interface are trademarks or registered trademarks of HDMI Licensing LLC.

All other product and brand names are trademarks or registered trademarks of their respective companies.



Printed in the USA. April 2016