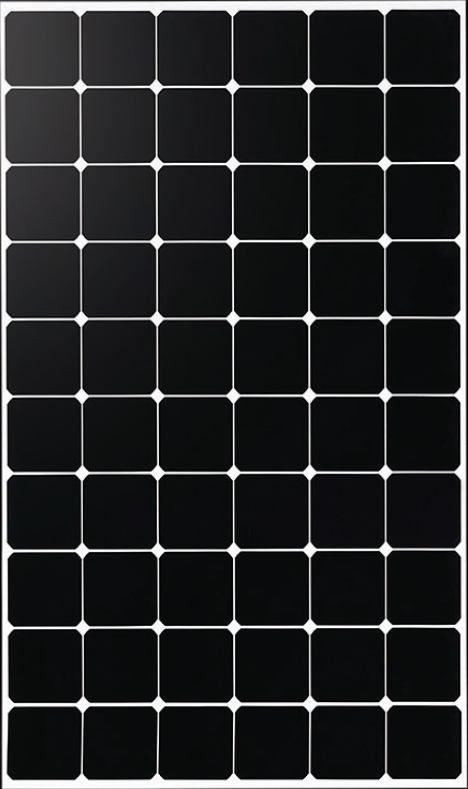


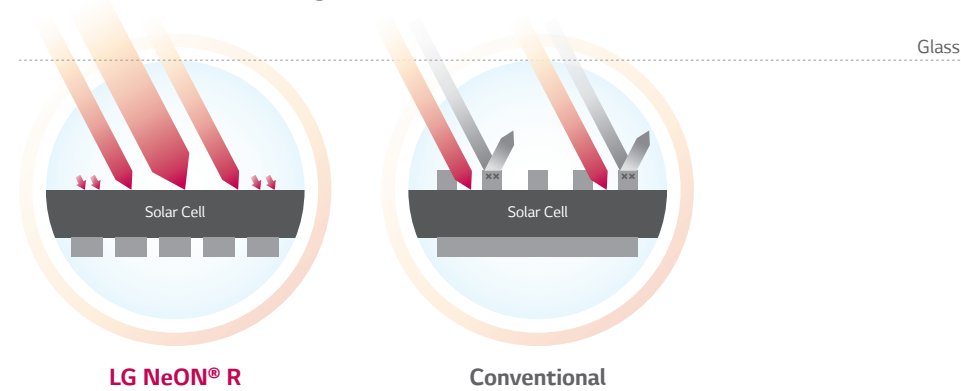
LG NeON[®]R



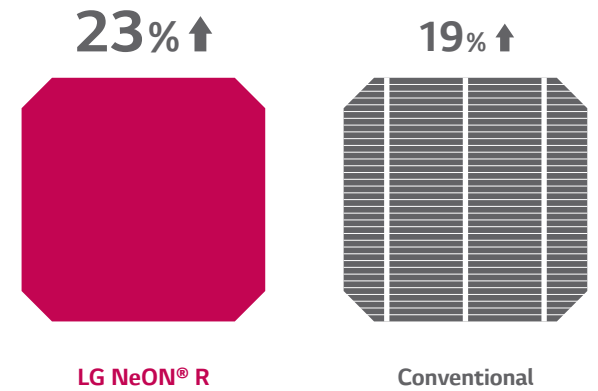
Cutting area

No Shading on the Cell

No electrodes to shade the light on the front of cell.



High Efficiency Cell Structure

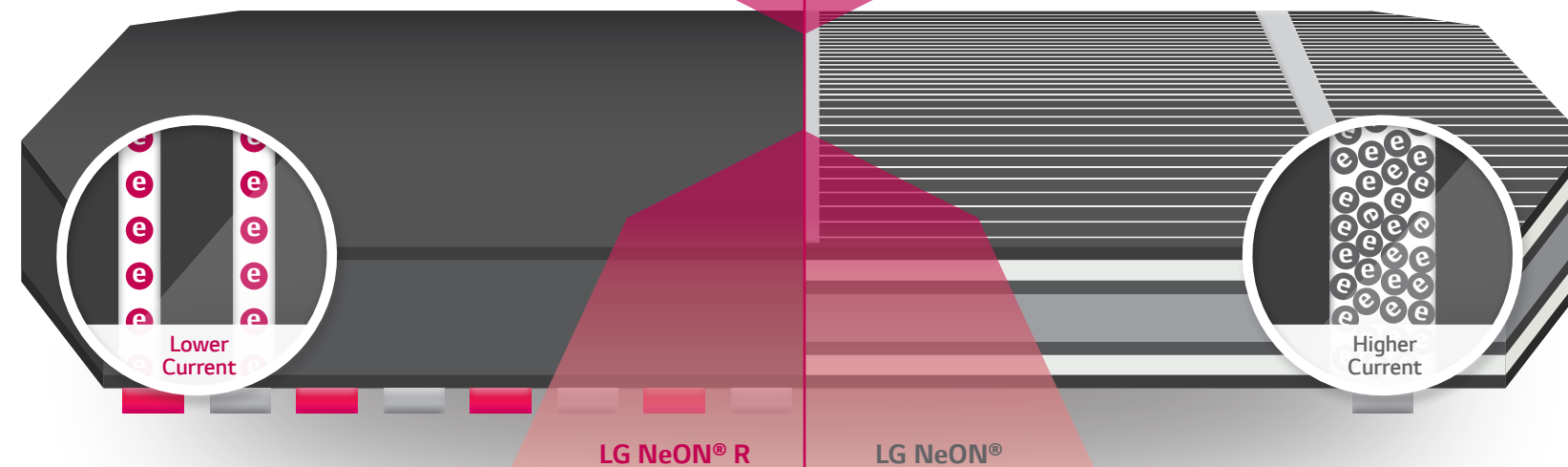


Newly Developed Back Contact Technology

Sunlight

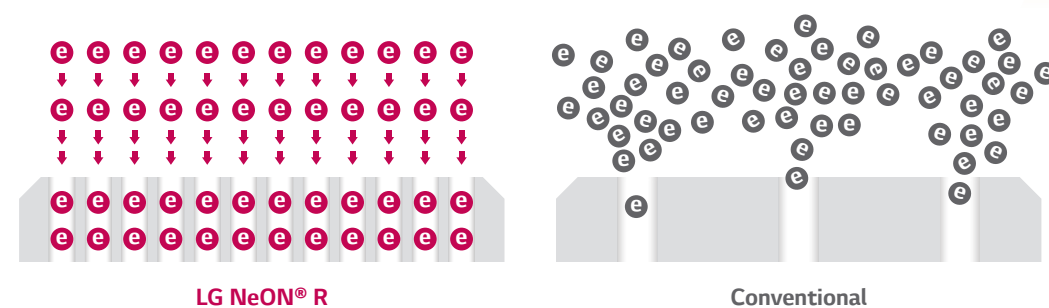
Maximize Light Absorption

LG NeON® R adopts advanced cell structure that all electrodes are on the rear side. The new structure contributes to increase of module power as well as improvement in temperature coefficient.



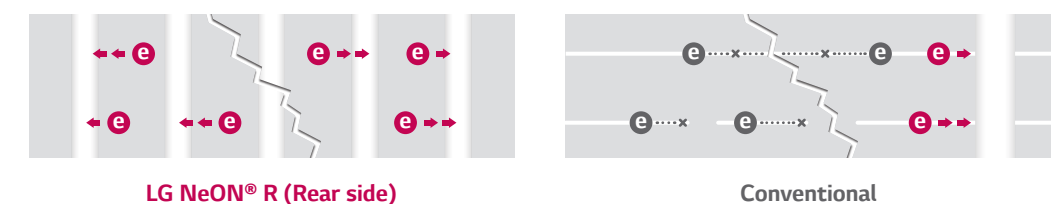
Separated Electrical Current

An electrical current is separated into many passes reducing the loss of electricity.



Less Power Generation Loss

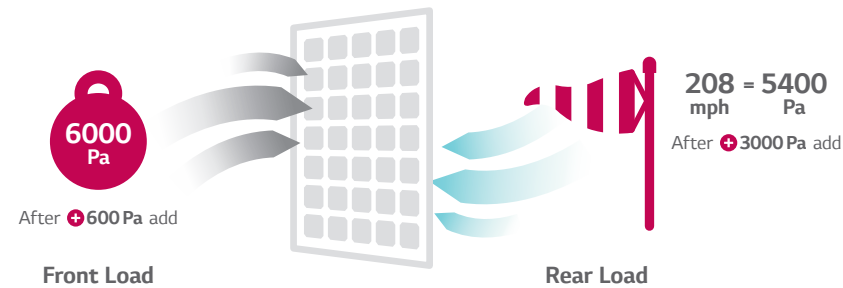
When micro crack or finger electrode erosion happens by natural degradation of mechanisms in the outskirts of the solar cell, LG reduces down performance by blocking the electrical path due to the tight layout of wires.



Enhanced Physical Durability

With its newly reinforced frame design, LG NeON[®] R modules are designed to endure a front load up to 6000 Pa, and a rear load up to 5400 Pa.

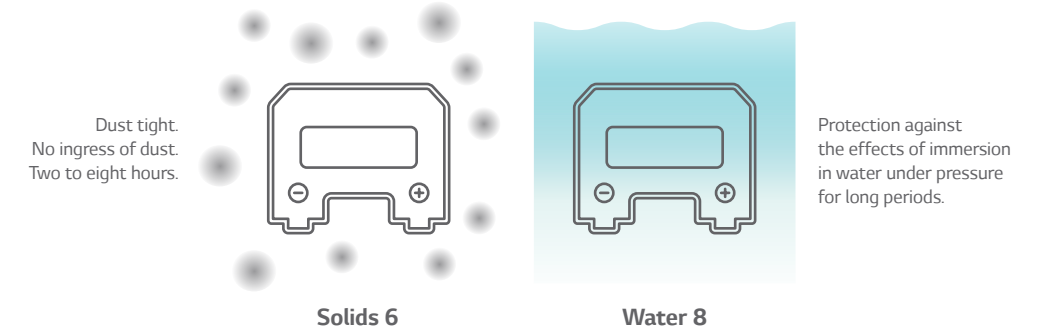
* Hurricane Katrina (2005. Aug) Max speed: 170mph (75m/s)



Junction Box With IP* 68 Rating

In view of environment, water-proof capability of the junction box has been improved.

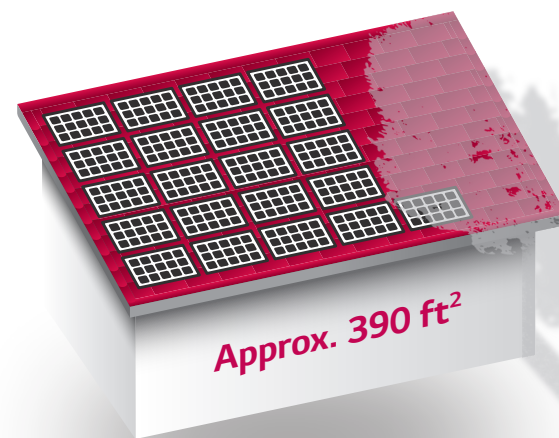
* IP: Ingress Protection



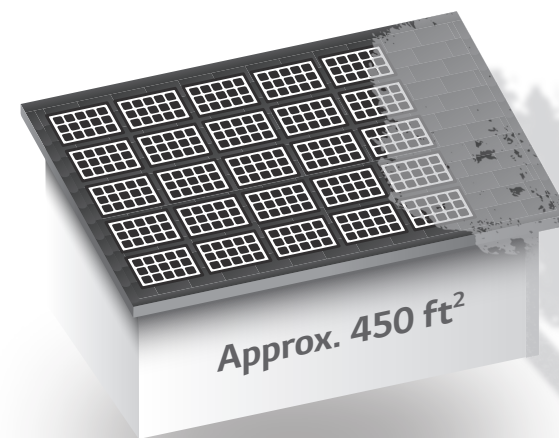
Advantage Space-efficient Panel

There are many factors to consider when installing solar modules on a roof, i.e. shape, direction and shade risks. The LG NeON[®] R offers a flexible solar design with high power system capacity and efficient space management.

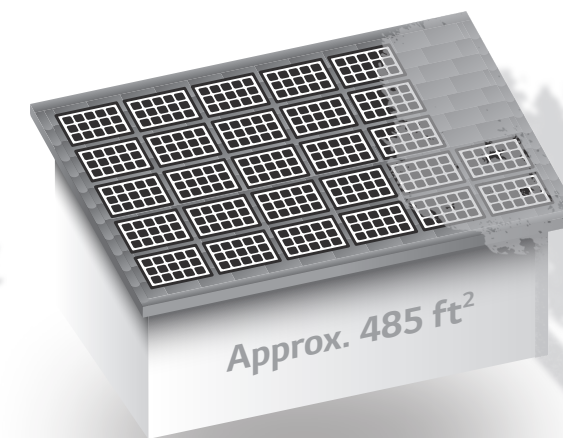
* Installing the same size system - based on 7kWh system installation



365W LG NeON[®] R



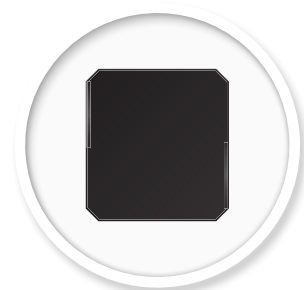
300W P-Mono PERC



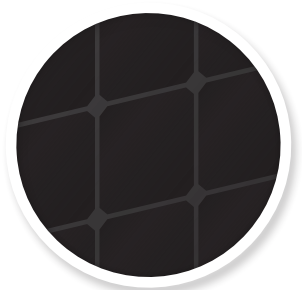
280W P-Multi PERC

Increase Home Value With a True Black Roof

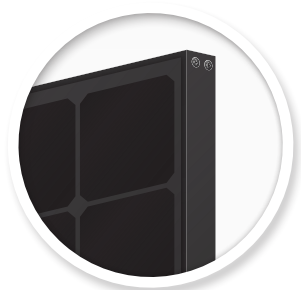
The LG NeON[®] R Black is a "true black" module that eliminates metal electrodes. The module's environmental and aesthetic design is ideal for roofs offering a clean, sleek modern exterior and increasing the home's value.



Eliminates electrodes on the front of cells



Enhances color matching between the cell and backsheet

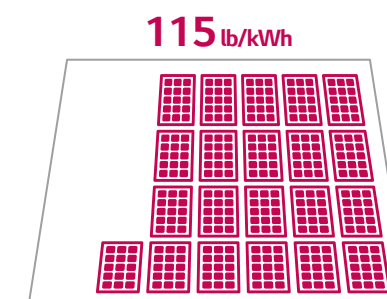


Delivers premium piano black frame

Advantage A Low Rooftop Burden

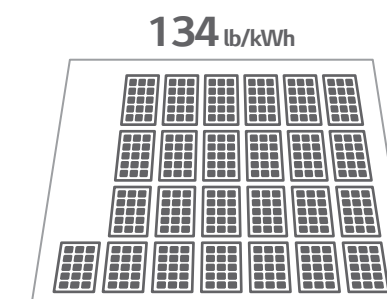
With its high performance, power and efficiency, the LG NeON[®] R decreases the rooftop burden with fewer modules to install.

* Installing the same size system - based on 7kWh system installation



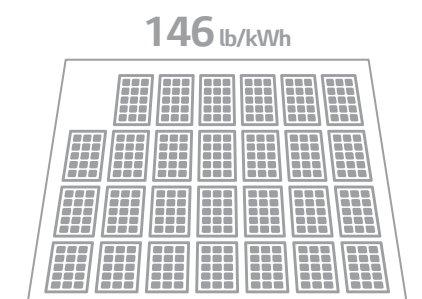
21 modules

365W LG NeON[®] R



25 modules

300W P-Mono PERC

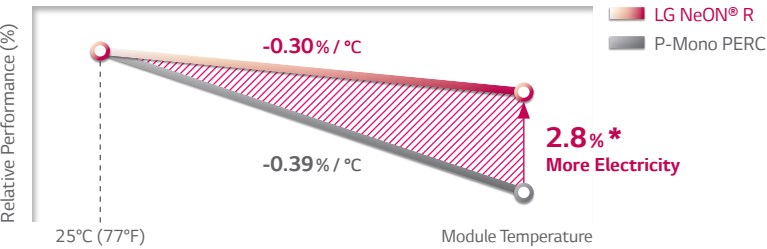


27 modules

280W P-Multi PERC

Good Performance in Heat

While strong sunlight helps solar modules generate energy, it also increases the system’s temperature and decreases performance. The LG NeON® R module maintains peak performance on hot, sunny days using an improved temperature coefficient.

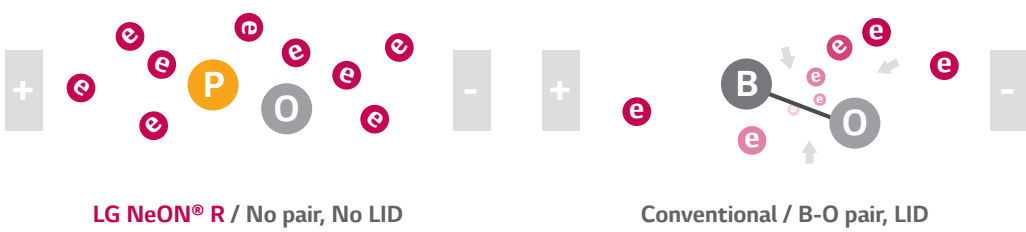


* PV Syst Simulation Result
- Location : New York, U.S
- Assuming one day in July (Maximum Temperature 34°C (93°F)
- Parameters form Pan file and Datasheet

Quality wafer with Extremely Low LID

The LG NeON® R based on high quality N-type wafer can minimize the Light Induced degradation, the power drop right after installation. The initial difference of performance continues for the whole lifespan of the solar system.

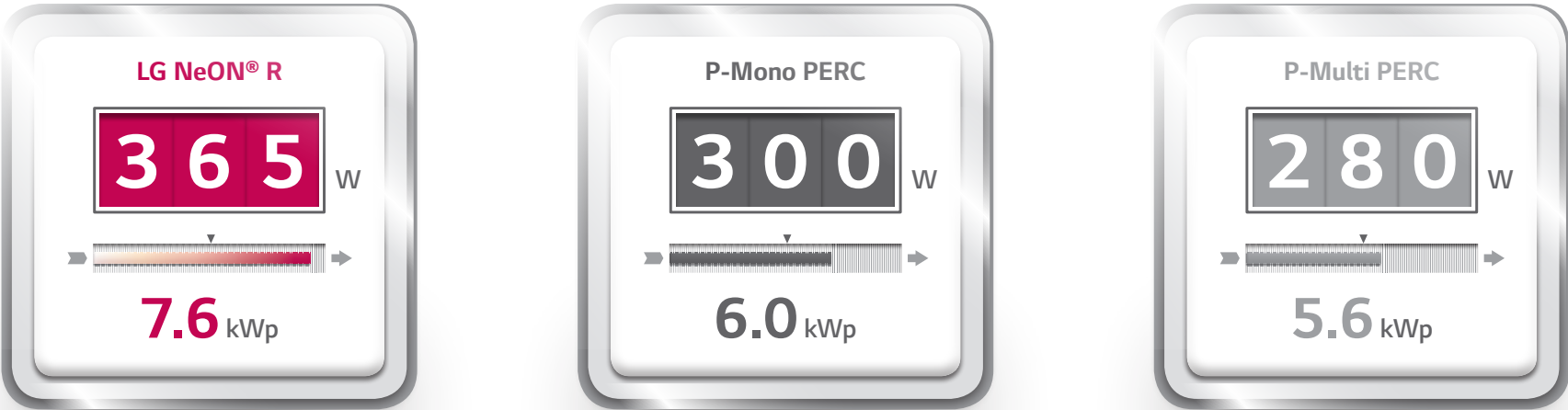
* LID: Light Induced Degradation



High Performance More Power Generation

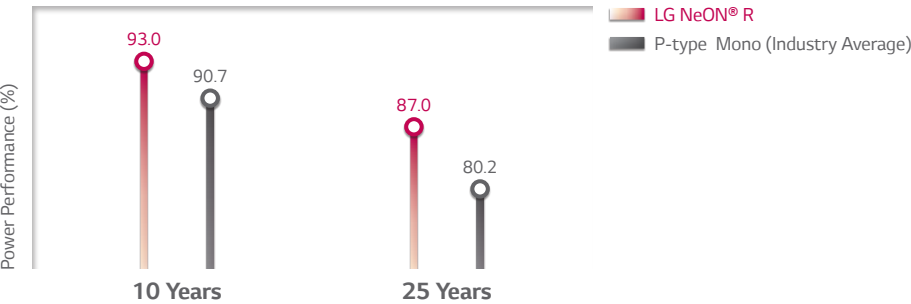
The LG NeON® R is a high-power luxury module boosting energy efficiency and maximizing system volume even with limited rooftop space.

* Installing the same amount of modules - 21 ea of 60cells modules



Enhanced Performance Warranty

The LG NeON® R is under new performance warranty to ensure long-term stable operation. After 25 years, power performance is guaranteed at least 87.0% relative to initial performance.



Extended Product Warranty

Industry leading 25 years product warranty and it is same coverage with power warranty.

