

27HK510S-W IPS FHD Surgical Monitor

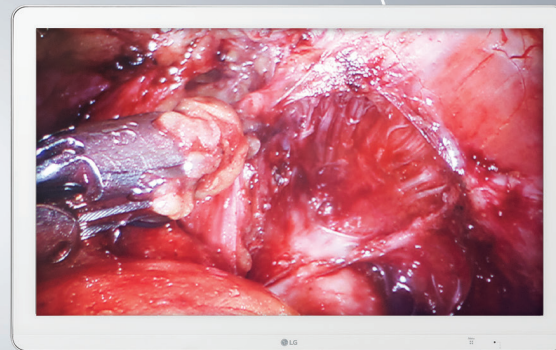


▶ 27HK510S-W

FDA Class 2
27" Class (27.0" Diagonal)

A DISPLAY OPTIMIZED FOR OPERATING ROOM

The superior detailed picture quality of the Full HD LG surgical monitor meets operating room needs with its 27-inch IPS display. This monitor enables detailed observation and allows multiple imaging applications to be displayed at once.



Images on screen are simulated



FEATURES

IPS & 99% OF SRGB

- The Full HD IPS monitor not only enables detailed observation of previously hard-to-see regions but also displays multiple imaging applications. In particular, the LG surgical monitor provides brightness and sRGB of 99% to ensure accurate color reproduction in the surgery room.

DICOM PICTURE MODE & BRIGHTNESS STABILIZATION

- This display has a dedicated DICOM picture mode and brightness stabilization to address concerns of the National Electrical Manufacturers Association (NEMA) and the American College of Radiology (ACR) to facilitate quality medical imaging during surgical procedures.

DYNAMIC SYNC MODE*

- Since during an operation, a display takes a lot of heavy information from many other devices those tracking the real-time condition of the patient, therefore visual distracting caused.

*Dynamic Sync Mode is only available to 60Hz input source.

ANTI-REFLECTION & OPTICAL BONDING GLASS

- Optically bonded glass significantly reduces internal reflection between the cover glass and the LCD to enhance accuracy. Improved anti-reflection ability enables displays to look brighter and sharper for the highest image quality.

DUST & WATER RESISTANT

- The LG's multi-coated IP35-rated glass is highly durable and protects the panel during surgical procedures.

SPECIFICATIONS

Designed Specifically for the Operating Room

UL Medical Grade Listed

FDA Class 2

TAA Compliant

Native Display Resolution 1920 x 1080

Contrast Ratio 1000:1

14ms (Typ.) Response Time

Six Axis Control

Brightness Stabilization

VESA™ Compliant Wall Mountable

3-Year Limited Warranty Parts/Labor/Backlight

27HK510S-W

IPS FHD Surgical Monitor

▶ 27HK510S-W

27" Class (27.0" Diagonal)



HEALTHCARE

PANEL	MODEL	27HK510S-W
	Size (Inch / cm)	27"
	Panel Type	IPS
	Color Gamut (CIE1931) (Typ.)	sRGB 99%
	Color Depth (Number of Colors)	1.07 B (10bit)
	Pixel pitch (mm)	0.1554mm x 0.1554mm
	Aspect Ratio	16:9
	Resolution	1920x1080
	Brightness (Typ.)	1000cd/m ²
	Contrast Ratio (Original) (DFC)	1000:1
	Response Time_Typ_(on/off) (GTG)	14ms (Typ) 5ms (High)
	Viewing Angle (CR≥10)	178/178
	Surface Treatment	With Air-Gap Bonding Glass (1.3T, 8H, Anti-Reflection, Anti-Finger)
SIGNAL INPUT	D-Sub	x1 (Includes 'Sync' signal)
	DVI-D	x2
	Composite	x1 (BNC)
	S-Video	x1
	Component	Share 'D-sub' port
	SDI	x1 (3G-SDI)
	HDMI	x1 (2.0)
	USB	USB 1 up/1 down (for HW calibration)
	Remote	RS-232C / RJ45
	Others	Equipotential Plug
	[Jack Location]	Rear
SIGNAL OUTPUT	DVI-D	x1
	SDI	x1 (3G-SDI)
	[Jack Location]	Rear
ELECTRICAL	Power Input Type	Adapter
	Power Input	100-240Vac, 50/60Hz
	Power Consumption: DC Off (Max)	0.3W
	H-Frequency (DVI-D)	30-83kHz
	V-Frequency (DVI-D)	56-61Hz
	H-Frequency (HDMI)	30-135kHz
RESOLUTION	Digital (DVI-D)	1920 x 1080
	Digital (HDMI)	1920 x 1080
	DVI-D	1920 x 1080
	SDI	1920 x 1080
OSD	Country	Worldwide
	Number of Languages	17
CONTROL KEY	Key Number (Power Key Included)	10
	Key Type	Dome Tact
	Indicator LED Color (On mode)	Green
	Key LED Color	White (5/10/20sec, Always)
	[Key Location]	Front
SPECIAL FEATURES	Picture Mode	Custom / Mono / sRGB / BT.709 / DICOM / Calibration 1 / Calibration 2
	ORIGINAL RATIO	Yes
	PIP	Yes
	PBP	Yes
	SIX Axis Control	Yes
	Super Resolution+	Yes
	Gamma	Gamma 1.8, Gamma 2.0, Gamma 2.2, Gamma 2.4, Gamma 2.6, DICOM Gamma curve
	Color Temperature	6500K / 8500K / 9300K, Manual (5000K - 10000K)
	DICOM Mode	Yes (K _D <= 10%)
	Factory Calibration	Yes (Delta E < 2, Gamma 1.8 - 2.6 / DICOM curve)

SPECIAL FEATURES	MODEL	27HK510S-W	
	H/W Calibration (True Color Pro)	Yes (Calibration 1-2 Mode)	
	Dynamic Sync Mode (Thru Mode)	Yes	
	Flicker safe	Yes	
	Brightness Stabilization	Yes	
	Uniformity Compensation	Yes	
	Black Stabilizer	Yes	
	RS232	Yes	
	DDC/CI	Yes	
	HDCP	Yes (1.4)	
	Key Lock	Yes	
	Plug & Play	Yes	
	Response Time Control	Yes	
	Smart Energy saving	Yes	
	DPM (auto Screen Off)	Yes	
	Mechanical Switch	Yes	
	User Preset	Yes	
	Auto Resolution -> Dual EDID	Yes	
	Color Calibrated	Yes	
	Flicker safe	Yes	
	Mechanical Switch	Yes	
	Six Axis Control	Yes	
	Smart Energy Saving	Yes	
	Super Resolution+	Yes	
	True Color Pro	Yes	
	Anti-Microbial	Yes	
MECHANICAL	Color - Front	White	
	Color - Back	White	
	Stand Included	No	
	Dimensions	25.7" x 16.2" x 2.3"	
	Packed Dimensions	29.3" x 19.5" x 6.0"	
	Wall Mount size (mm)	200x100 / 100x100	
	Weight	17.0 lbs	
	Packed Weight	24.5 lbs	
	STANDARDS	FDA	FDA Class II (510K)
		CE MDD	CE MDD Class I REGISTRATION
		CMDR	Health Canada Class I REGISTRATION
		IEC	IEC60601-1
		cUL	ANSI/AAMI ES 60601-1 CSA CAN/CSA-C22.2 NO. 60601-1
EN		EN60601-1	
CISPR		IEC60601-1-2	
EN		EN60601-1-2	
IEC		IEC60950-1	
CISPR		IEC60601-1-2	
FCC		FCC part 15 Class A	
ICES		ICES-003	
KC		KC	
EN		CCE	
Ingress Protection (Dust/Water-proof)		Front : IP35 / Back : IP32	
Impact Protection (Vandal-proof)		IK06	
HDMI	Yes		
RoHS	Yes		
REACH	Yes		
WEEE	Yes		
ACCESSORIES	Power Cord	Yes with Adapter	
	D-Sub	Yes	
	DVI-D	Yes	
	HDMI	Yes	
	Manual	Yes	
	Factory Calibration Report	Yes	
	Graphic Card Guide	Yes	
CD-ROM	Yes - User Manual, Driver (Monitor, Calibrator), True Color Pro, Dual Control, On Screen Control 2.0		
OTHER	UPC	7 19192 62421 4	
	Warranty	3-Year Limited Warranty (Parts/Labor/Backlight)	

- Ⓜ <http://www.lg.com/us/business/commercial-display>
- 🐦 <http://www.twitter.com/LGCommDisplays>
- 📘 <http://www.facebook.com/LGcommercialdisplays>
- 👤 <http://www.linkedin.com/company/lg-commercial-displays-usa>
- 📺 <http://www.youtube.com/lgcommercialdisplayusa>
- ☎ 800-897-8726 | IT Sales

LG Electronics U.S.A., Inc.
HE B2B Division
2000 Millbrook Drive
Lincolnshire, IL 60069

Customer Service: 888.865.3026
www.LG.com/us/commercial/display-support

Contact your LG Regional Sales Representative:
Sales Contact: 800.897.8726
E-mail: info@LGSolutions.com

SPEC_27HK510S-W_011941_PR



All screen images are simulated. Dimensions and weights are approximate. Design, specifications, and features subject to change without notice.

© Copyright 2019 LG Electronics USA, Inc. All rights reserved. LG and the LG logo are registered trademarks of LG Corp.

In Plane Switching is a trademark of LG Display Co., LTD. VESA is a trademark of Video Electronics Standards Association. HDMI, the HDMI logo and High-Definition Multimedia Interface are trademarks or registered trademarks of HDMI Licensing LLC. All other product and brand names are trademarks or registered trademarks of their respective companies.

