

INTERNATIONAL AIRPORT

Departure 9:50 AM

Flight	STD	To/Via	Counter	Remark	Flight	STD	To/Via	Counter	Remark
MI2263	11:05	Wisconsin	L10-L12	Canceled	MU9643	12:05	Berlin	A1-10	Check-In
MI2984	11:10	Michigan	K20-K29	Check-In	MU2432	12:10	Paris	A11-A20	Check-In
MF8740	11:10	Nevada	M20-M2	Check-In	MH3720	12:20	London	C20-C25	Check-In
MI2154	11:15	New Jersey	M20-M2	Check-In	3U8154	12:25	Rome	E11-E17	Canceled
CZ6230	11:20	California	L3-L10	Check-In	MI2890	12:40	Budapest	E1-E10	
G52091	11:25	Colorado	K20-K29	Check-In	CH5903	12:45	Lisbon	D5-D12	
CZ6455	11:30	Florida	NG-N10	Canceled	3U8879	12:50	Monaco	F1-F3	
HO1078	11:35	Mississippi	N1-N5	Check-In	1U6350	13:00	Amsterdam	F5-F10	
MU2286	11:40	Missouri	O10-O15	Check-In	CH3212	13:10	Prague	S10-S15	
3U8195	11:45	Virginia	M10-13	Check-In	3U2111	13:15	Viadrid	D5-D12	
MF2378	11:50	Pennsylvania	M10-13	Check-In	MU9651	13:20	Stockholm	F5-F10	
MI211Q	11:55	Texas	M2	Check-In	MI1212	13:30	Ankara	E1-E10	


TRAVEL AROUND THE WORLD
ANYTIME, ANYWHERE





* All images are for illustrative purposes only.


INDOOR LG LED SIGNAGE

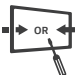
LSCA Versatile Series

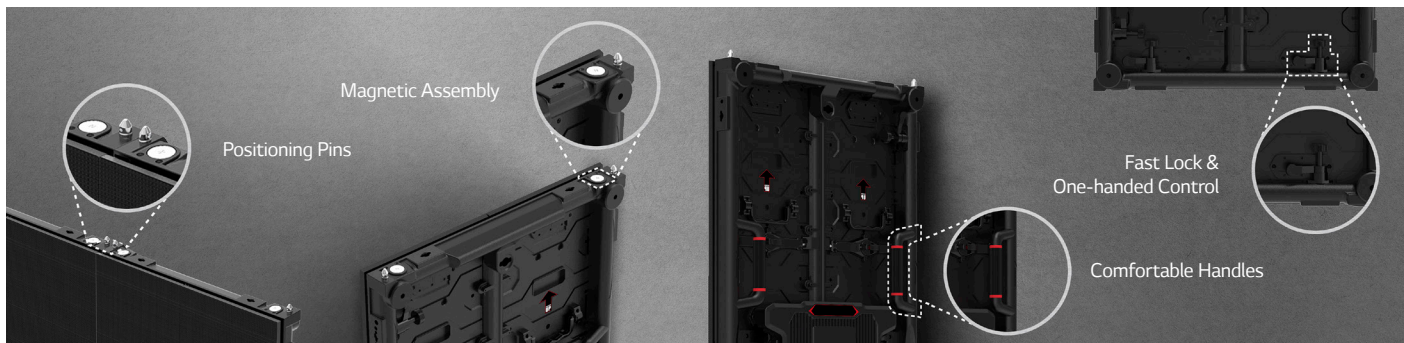
 Fast Installation

 Easy Maintenance

 Two Cabinet Options

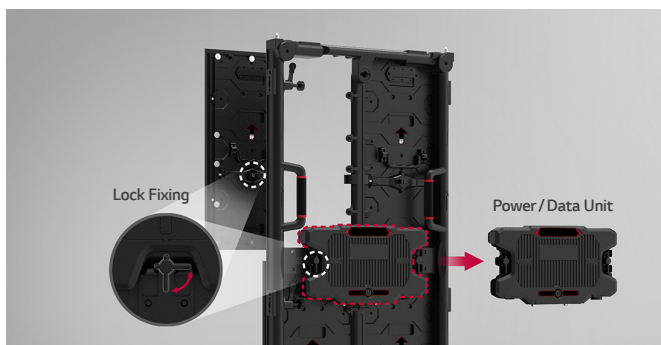
 90° Corner Design Available

 Front or Rear Serviceability



Fast Installation

Various factors including magnets on the top and bottom, positioning pins, handles and fast locks help installers easily set up and dismantle the LED screens without additional tools.



Easy Maintenance

The LSCA series utilizes a simple Lock Fixing method which requires no additional tools, making it easier to replace LED modules or power/data units. It saves cost and time for maintenance.



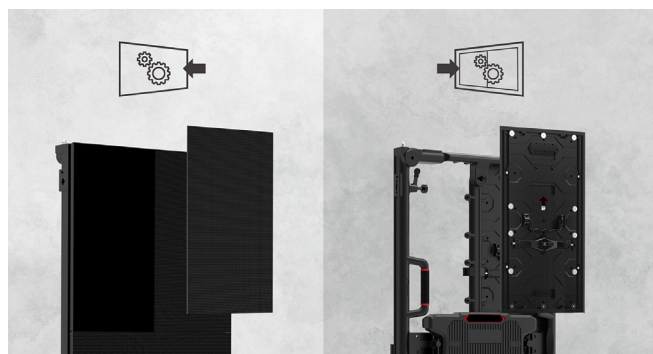
Two Cabinet Options

The LSCA series offers two sizes of cabinets, enabling a screen size configuration that fits perfectly with a variety of installation requirements.



90° Corner Design Available

If you add a 90° corner option, the LSCA series can deliver attention-grabbing content even when installed on right-angled structures.



Front or Rear Serviceability

The product offers either front access or rear access, allowing customers to choose installation options according to their environment.

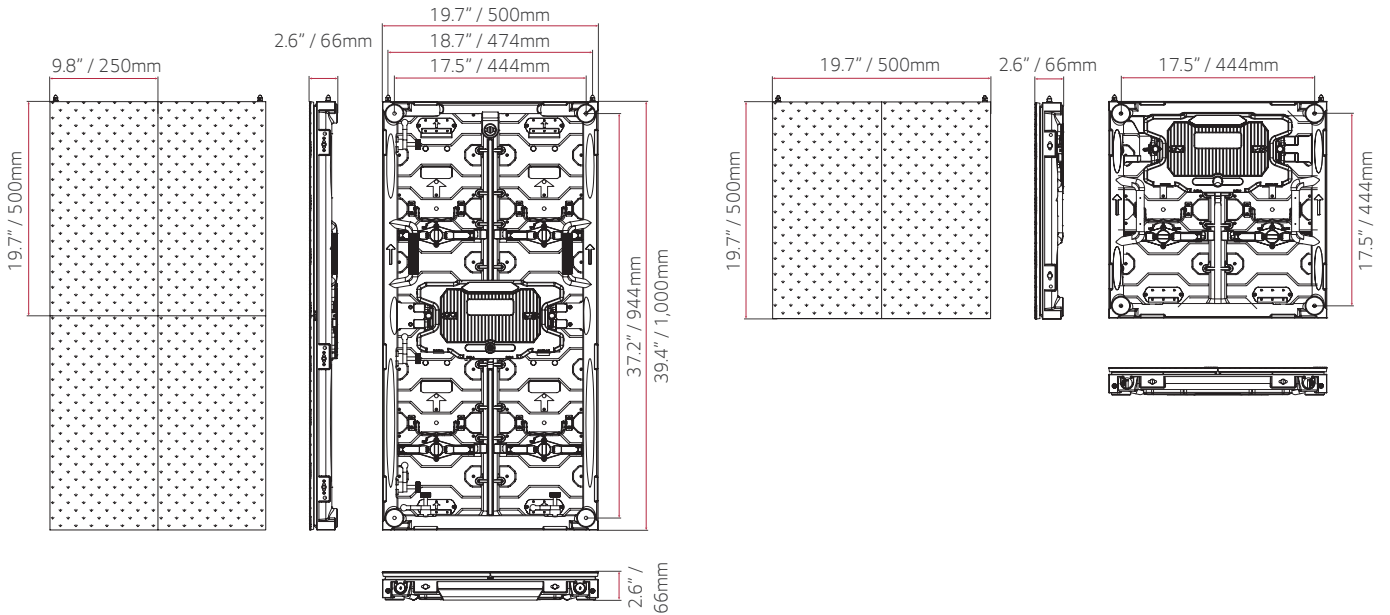
PRODUCT INFORMATION



LSCA Series

Pixel Pitch	2.97 / 3.91 mm
Brightness	1,000 nits
Refresh Rate	2,880 / 3,840 Hz
Serviceability	Front or Rear (One Option Only)
IP Rating	IP30

DIMENSIONS



		LSCA029-GK	LSCA029-GK2	LSCA039-GK	LSCA039-GK2
PHYSICAL PARAMETERS	Pixel Configuration	3 in 1 SMD	3 in 1 SMD	3 in 1 SMD	3 in 1 SMD
	Pixel Pitch	2.97 mm	2.97 mm	3.91 mm	3.91 mm
	Module Resolution (W x H)	84 x 168	84 x 168	64 x 128	64 x 128
	Module Dimensions (W x H)	9.84 x 19.7 in 250 x 500 mm	9.84 x 19.7 in 250 x 500 mm	9.84 x 19.7 in 250 x 500 mm	9.84 x 19.7 in 250 x 500 mm
	Weight per Module	2.87 lbs / 1.3 kg	2.87 lbs / 1.3 kg	2.87 lbs / 1.3 kg	2.87 lbs / 1.3 kg
	LED Package Manufacturer	KL+Cu	KL+Cu	KL+Cu	KL+Cu
	No. of Modules per Unit Case (W x H)	2 x 2	2 x 1	2 x 2	2 x 1
	Unit Case Resolution (W x H)	168 x 336	168 x 168	128 x 256	128 x 128
	Unit Case Dimensions (W x H x D)	19.7 x 39.7 x 2.6 in 500 x 1000 x 65.6 mm	19.7 x 19.7 x 2.6 in 500 x 500 x 65.6 mm	19.7 x 39.7 x 2.6 in 500 x 1000 x 65.6 mm	19.7 x 19.7 x 2.6 in 500 x 500 x 65.6 mm
	Unit Case Surface Area	5.4 ft ² / 0.5 m ²	2.7 ft ² / 0.25 m ²	5.4 ft ² / 0.5 m ²	2.7 ft ² / 0.25 m ²
	Weight per Unit Case	30.9 lbs / 14 kg	22.0 lbs / 10 kg	26.5 lbs / 12 kg	17.6 lbs / 8 kg
	Weight per Unit Area	5.7 lbs/ft ² / 28 kg/m ²	8.2 lbs/ft ² / 40 kg/m ²	4.9 lbs/ft ² / 24 kg/m ²	6.6 lbs/ft ² / 32 kg/m ²
	Physical Pixel Density	10,488 pixels/ft ² 112,896 pixels/m ²	10,488 pixels/ft ² 112,896 pixels/m ²	6,088 pixels/ft ² 65,536 pixels/m ²	6,088 pixels/ft ² 5,536 pixels/m ²
	Flatness of Unit Case	±0.3 mm	±0.3 mm	±0.3 mm	±0.3 mm
	Unit Case material	Die-casting Aluminum	Die-casting Aluminum	Die-casting Magnesium	Die-casting Magnesium
Service access	Front or Rear (select one only)	Front or Rear (select one only)	Front or Rear (select one only)	Front or Rear (select one only)	
OPTICAL SPECIFICATIONS	Max Brightness (After Calibration)	1000 nits	1000 nits	1000 nits	1000 nits
	Color Temperature	3500 ~ 9000 K	3500 ~ 9000 K	3500 ~ 9000 K	3500 ~ 9000 K
	Visual Viewing Angle (Horizontal)	160°	160°	160°	160°
	Visual Viewing Angle (Vertical)	160°	160°	160°	160°
	Brightness Uniformity	97%	97%	97%	97%
	Color Uniformity	±0.003CxCy	±0.003CxCy	±0.003CxCy	±0.003CxCy
	Contrast Ratio	5000:1	5000:1	7000:1	7000:1
	Processing Depth	14 bit	14 bit	14 bit	14 bit
ELECTRICAL SPECIFICATIONS	Max Power Consumption (W)	270 W	135 W	270 W	135 W
	Avg Power Consumption (W)	90 W	45 W	90 W	45 W
	Max Power Consumption per Unit Area	540 W/m ²	540 W/m ²	540 W/m ²	540 W/m ²
	Max Power Consumption	921 BTU/hr	461 BTU/hr	921 BTU/hr	461 BTU/hr
	Avg Power Consumption	307 BTU/hr	154 BTU/hr	307 BTU/hr	154 BTU/hr
	Max Power Consumption per Unit Area	1,842 BTU/m ²	1,842 BTU/m ²	1,842 BTU/m ²	1,842 BTU/m ²
	Power Supply	100 to 240 Vac	100 to 240 Vac	100 to 240 Vac	100 to 240 Vac
	Frame Rate	50 / 60 Hz	50 / 60 Hz	50 / 60 Hz	50 / 60 Hz
Refresh Rate	2,880 Hz	2,880 Hz	3,840 Hz	3,840 Hz	
OPERATION SPECIFICATIONS	LED Lifetime (Half brightness)	100,000 hrs	100,000 hrs	100,000 hrs	100,000 hrs
	Operating Temperature	14°F to 113°F -10°C to +45°C	14°F to 113°F -10°C to +45°C	14°F to 113°F -10°C to +45°C	14°F to 113°F -10°C to +45°C
	Operating Humidity	0 to 80% RH	0 to 80% RH	0 to 80% RH	0 to 80% RH
	IP rating Front	IP30	IP30	IP30	IP30
	IP rating Rear	IP30	IP30	IP30	IP30
WARRANTY & OTHER	Warranty	3 Year Limited	3 Year Limited	3 Year Limited	3 Year Limited
	Controller	LCIN006	LCIN006	LCIN006	LCIN006
	90 degree corner cut	Yes	Yes	Yes	Yes
	FCC (Regulatory)	Yes	Yes	Yes	Yes
	CE (Regulatory)	Yes	Yes	Yes	Yes
	RoHS (Environmental)	Yes	Yes	Yes	Yes