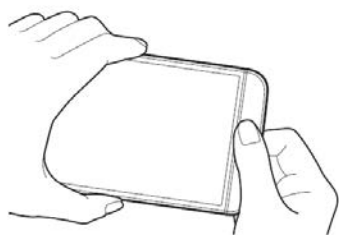




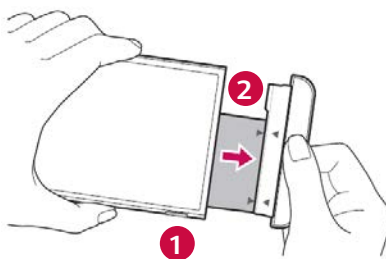
Plug into your LG CAM Plus

Slide in the CAM Plus for more control when taking shots, and get a grip on the ins and outs of setup and usage.

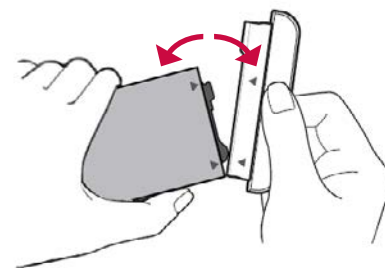
HOW TO CONNECT THE CAM PLUS TO YOUR LG G5



1 Turn off the **LG G5**® and hold it with the screen facing you.



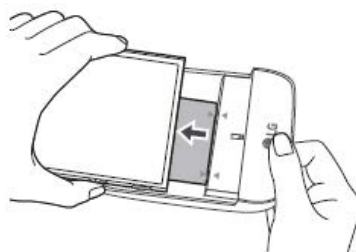
2 Press the module release button (1) and pull the battery module out to remove it from your phone (2).



3 Disconnect the battery from the module by pulling it in an outward arc.



4 Connect the battery to the **LG CAM Plus** by lining up the arrows and snapping it in.



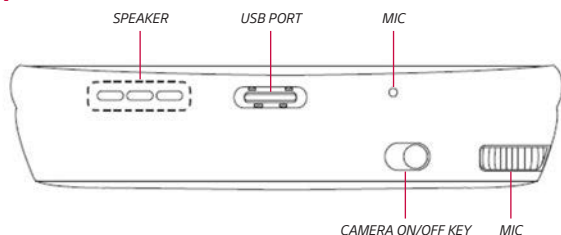
5 Carefully slide the battery and the **LG CAM Plus** module into the phone until it's closed. You should hear a slight click when it's secured.

Notes: The **LG CAM Plus** will not operate normally if your **LG G5** and **LG CAM Plus** are supported by different countries or operators. Please ensure your **LG CAM Plus** matches your service provider. (Module # 720 – AT&T; Module # 700 – Sprint, Verizon, ACG, T-Mobile, U.S. Cellular)

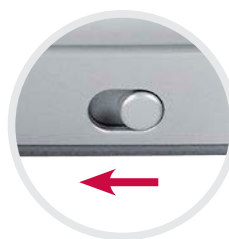
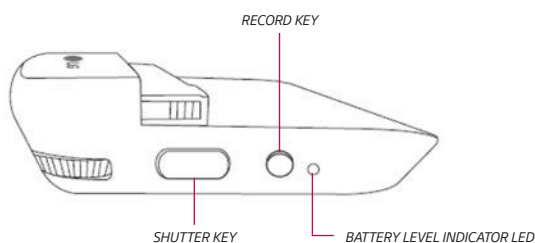
OPERATING THE LG CAM PLUS

The **LG CAM Plus** must have a battery power to function.

FRONT



SIDE



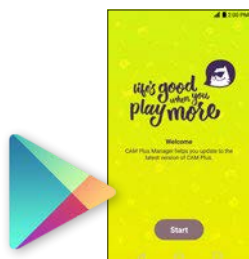
- 1 After inserting the LG CAM Plus module, slide the **Camera On/Off Key**. (Phone functions will operate as normal even when the CAM Plus is attached.)
- 2 Scroll the wheel to zoom in and out. (Zooming all the way out automatically activates the LG G5's Wide Angle Lens.)



- 3 Press and hold the **Shutter Key** halfway to focus, and press the rest of the way to take the picture.
- 4 Press the **Record Key** to begin capturing a video.

Notes: The LG CAM Plus cannot be operated while the USB is connected (data communication and charging are still available). You can only use one LG Friend at a time, OTG devices that are connected to the LG CAM Plus will not be recognized (e.g. LG 360 VR, OTG card readers, etc.).

UPDATING THE LG CAM PLUS



- 1 For updates/upgrades to your LG CAM Plus, access the Friends Manager App which comes preinstalled, or download the LG CAM Plus Manager from the Google Play™ Store.*
- 2 Open the LG CAM Plus Manager and tap **CHECK** to see if your device is running the latest software.
- 3 A message will display that you are using the latest software, or an update will be made available. If available, tap **NEXT** and then tap **UPDATE**.
- 4 Once updated, press and hold the Camera On/Off Key and Record Key for 5 seconds to complete.



* If the LG Friends Manager does not come preinstalled on your LG G5, search and download the LG CAM Plus Manager from the Google Play Store.

BATTERY CHARGING & ALERTS

The Power LED indicates the battery level.

Power LED (with the cable disconnected)	Off	Red	Red Blinking
Battery Status	More than 11%	5% - 10%	Less than 5%

Power LED (with the cable connected)	Red	Green
Status	Charging	Fully Charged

LG CAM PLUS BATTERY

- The LG CAM Plus comes with a built-in 1,200 mAh battery to power the camera module.
- In addition, the LG CAM Plus will also charge your LG G5 battery when the camera is in use.*

* The charging feature is not available when the LG G5's battery is completely empty (G5 is powered off).